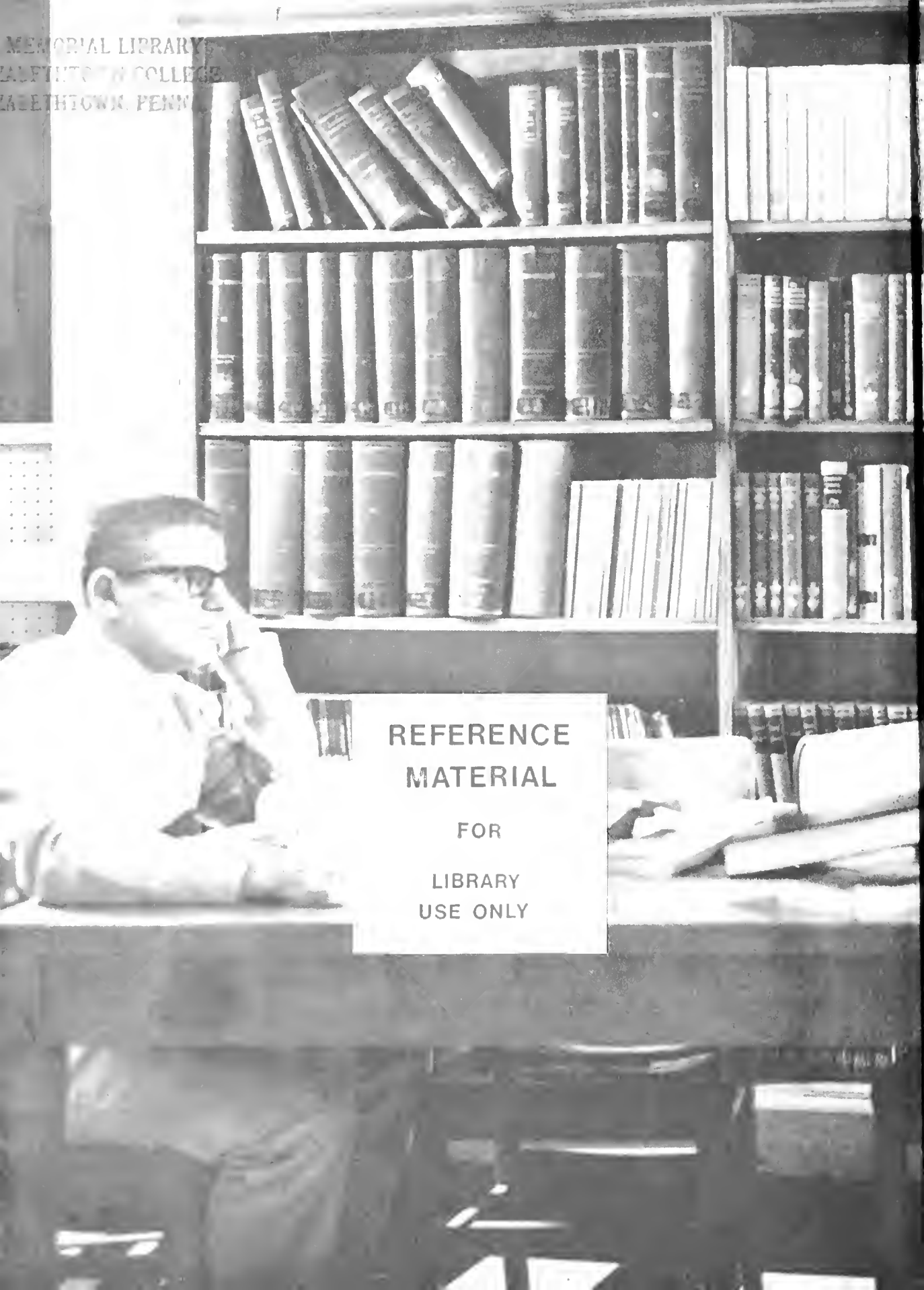




*Conestogan*  
1959

MEMORIAL LIBRARY  
ALFRED W. COLLEGE  
LANCASTER, PENN.



**REFERENCE  
MATERIAL**

**FOR**

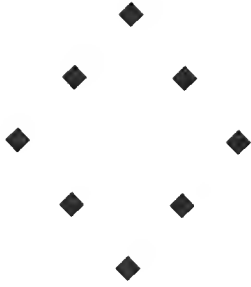
**LIBRARY  
USE ONLY**



"No pleasure is comparable to the standing upon the vantage ground of truth."—Bacon

Digitized by the Internet Archive  
in 2011 with funding from  
LYRASIS members and Sloan Foundation

<http://www.archive.org/details/conestogan1959eliz>



*The*

*1959*

*Conestogan*

ELIZABETHTOWN COLLEGE  
LIBRARY

ZUG MEMORIAL LIBRARY  
ELIZABETHTOWN COLLEGE  
ELIZABETHTOWN, PENNSYLVANIA

PUBLISHED BY THE STUDENT ASSOCIATION  
ELIZABETHTOWN COLLEGE  
ELIZABETHTOWN, PENNSYLVANIA

# Contents

Foreword	3
In Memoriam	4
Dedication	6
The College	8
Administration and Faculty	18
The Student Body	38
Student Activities	110
Sports	122
Campus Life	136
1959 Conestogan Staff	154
Advertisements	155

# Foreword



TIME HAS BEEN GOOD to Elizabethtown College. The 60 years during which she has grown have matured and strengthened her. Throughout the course of her record, she has been blessed with loyal and devoted guidance, with wise and capable leaders.

Through all of the hazards and problems that come to a college, through the "growing pains" of progress, Elizabethtown has continued to prosper, guarded and backed by the knowledge that she was following the command, "Go, *teach* all nations."

Therefore, the motto, "Educate for Service" is most appropriate. The school has educated men and women as leaders in all fields: the professions (medicine, law, teaching), business, and religion to name a few. She has served mankind by sending her graduates into the world, made strong by the sound principles and training fostered here.

She has served God by her service to man.

# In Memoriam



EBY C. ESPENSHADE

*"It is the goal of each Candle to so live that he may shed the warmth of his personality in friendliness and good cheer on the campus, and that this same glow may be a unit for measuring the spirit of Elizabethtown."*

—1934 *Etonian*

It was in 1934 that Eby C. Espenshade, as a student at Elizabethtown College, was a member of an organization, the "Candles," which had as its goal the above challenge.

Mr. Espenshade, as Director of Admissions since 1947, was the first contact many students had with our College. For this reason, his personality had to be one characterizing the atmosphere, ideals, and purposes of

## ELIZABETHTONIA

Where the high-wheeled Conestogas  
Roll'd their cargoes by,  
Proudly stands our Alma Mater,  
On her hilltop high.

When the evening twilight deepens,  
And the shadows fall,  
Lingers long the golden sunbeam  
On thy western wall.

When the shades of life shall gather  
And sad the heart may be,  
Still the rays of youth and laughter  
Shall linger long o'er thee.

E'er to thee we sing our praises  
With a glad refrain  
Deus, Lux, et Veritas  
Her motto we acclaim.

### CHORUS:

Flag we love, Gray and Blue  
Float for aye, o'er thee!  
May thy sons be leal and loyal  
To thy memory.

Elizabethtown College and its people. To this end, Mr. Espenshade devoted his life.

His family, friends, and colleagues will long remember him for his warmth of personality and good cheer. It is only from a heart possessing deep love and loyalty for a college that a poem could be written such as Mr. Espenshade wrote during his position as Director of Admissions.



◆        ◆        ◆

We of Elizabethtown College will long remember two of our most outstanding students, Audrey Kilhefner and John Hollinger. Both graduated with honors after completing four years of academic endeavor. During their years at Elizabethtown, their interest in fellow students and in the activities of the school is evidenced in almost all areas of campus life.

A major in elementary education, Audrey was a class officer for four years and served as a member of the Committee on Women's Affairs for two years. Her musical talents were a part of our college choir, chorus, and orchestra. She gave not only of her talents but her time as she participated in the religious activities of SCA and CBYF.

Sports, student government, and campus religious life claimed the interests of John, a liberal arts major. A star wrestler as well as a member of the tennis team, John was also a leader in other fields. He served as vice president of his class during his sopho-

more and senior years and was a member of the Student Senate. Many of his efforts and interests were expressed in the religious activity of SCA.

Sincere in purpose, dependable in service and dedicated to a life of high ideals these two people met and fell in love on our campus. The faith of those who loved them is beautifully expressed in a paragraph, taken from a letter written by one of their friends. . . .

*"Audrey and John, so recently graduated from College, have now gone on together to a larger life than the one they had planned for here. Bound together by their love in death as well as in life, they are now experiencing joys which you and I can only dimly imagine. To us, with our earthly eyes and limited vision, it seems a tragic ending to hopes and dreams, but for them it is glory unspeakable and the complete fulfillment of all of life."*



AUDREY GAYLE KILHEFNER



JOHN C. HOLLINGER

# *Dedication*



THE EXPRESSION "to take stock of" originated in the world of business. A corporation pauses after a certain period to evaluate its progress and to revise or modify its policies for the coming years. In this sense, Elizabethtown College this year is taking stock of her progress since 1898 and has made her slogan for the time, "Six Decades of Service."

This service has been accomplished in many ways: through organizations, faculty, guidance, companionship, but always with the prayerful attitude of showing gratefulness to her Maker by giving of her best to strengthen the world.

During this year our thoughts turn backward to re-live and recapture the growth of Elizabethtown College from her humble, unpretentious beginnings to the present with its program of expansion and extension.

We realize at this time the solidity of foundation and heritage upon which Elizabethtown can build a bright future, carrying on her motto of "Education for Service." Her capacity and capabilities are great: the motivating force of a dedication to serve God is strong.

Because of the opportunity given to our College's future, we dedicate this issue of the CONESTOGAN to the 60th anniversary of Elizabethtown College and to all of those who have contributed in any way to her growth and maturity.



# *The College*

“Six Decades of Service” . . . through her history . . . Elizabethtown College has grown in many ways . . . enrollment . . . six students . . . to more than 630 students . . . campus . . . the second floor of a downtown building . . . nine buildings . . . one being built soon . . . faculty . . . three members . . . over 50 today . . . at first an academy . . . now a fully-accredited four-year college . . . this growth has been accompanied . . . by a devotion to education . . . a determination to help young people . . . to uphold Christian principles . . . on which the College was founded . . . the future looks prosperous . . . growth and maturity . . . the essence of history . . . they are here . . . in abundance.





SIMON P. ENGLE



JOSEPH H. ESHELMAN



BENJAMIN G. GROFF



SAMUEL H. HERTZLER

## *The College is Born*

*The Church of the Brethren, Reading,  
Penna., November, 1898—*

THIRTY-FOUR MEN AND WOMEN gathered with one common idea—the need for a new college in eastern Pennsylvania. These 12 women and 22 men, members of the Church of the Brethren, realized the need for a church-related college, although much prejudice against higher education existed within the church.

A committee was appointed to check various sites for the proposed college, and the small group, meeting in Reading, zealously moved to promote the establishment of the institution.

*Church of the Brethren, Elizabethtown,  
Penna., April 8, 1899—*

Representatives from the Eastern Pennsylvania District of the Church were called together by S. R. Zug, Mastersonville, and a formal decision to initiate a college was made.

Broad objectives of the new institution were defined, various courses were suggested, and the following locations were considered: Mountville, Columbia, Pottstown, Ephrata, Norristown, Lititz, and Elizabethtown. Mack College (in honor of Alexander Mack, a founder of the Church of the Brethren), Conestoga College, East Penn College, and Elizabethtown College were proposed names for the new institution.

Pictured at left are four of the five men who signed the original charter of Elizabethtown College. The staff was unable to procure a photo of the fifth man, Joseph H. Rider.

# The College Matures

*Home of Nathan Hoffman, Pottstown,  
Penna., June 16, 1899—*

The first Board of Trustees met. Elected to office were: Jesse Ziegler, Royersford, president; T. F. Imler, Lancaster, vice president; George N. Falkenstein, Germantown, secretary; and Samuel H. Hertzler, Elizabethtown, treasurer. Shortly after being elected, Imler resigned and was replaced by Joseph H. Rider, Elizabethtown.

Other members of the first formally-elected board were Nathan Hoffman, Pottstown; M. R. Henry, Derry Church; P. C. Nyce, Reading; and L. R. Brumbaugh, Denton, Md. Other members of the early boards of trustees were George Bucher, Mechanics' Grove, and David Kilhefner, Ephrata.

The responsibility of combining Christian ideals and accepted principles of higher education in such a manner as to gain the support of the Church and the respect of the educators fell on the shoulders of these able men. A blended mixture of aggressiveness, dignity, mildness, and conservatism characterized this group.

The founders were confronted with the duty of setting up purposes and ideals for the new institution. The original charter stated the following purpose, which the College continues to uphold: "to give such harmonious development to the physical, mental, and moral powers of both sexes as will best fit them for the duties of life and promote their spiritual interests."

The College through the years has advocated that men and women can serve God through any vocation which serves the needs of mankind. A college education is regarded not only as "preparation for life" but as life itself, and this life in college continually calls for hard work and firmness of purpose.



The early days. . . . In the beginning of the 20th century, the campus boasted only two buildings of consequence, Alpha and Rider Memorial Halls. The trees that now so completely shade the campus were only infants, as shown in these early photos.





In the fields. . . . Students and faculty grew some of the food that was served in the College dining hall in the early years. This photo, taken from the area in front of what is now the New Women's Residence, appears to be a cultivating project by students. The man with the large hat in front is H. K. Ober, who was affiliated with the College from 1902. He became president in 1918.

Additional ideals formulated by the founding fathers were: a man can give his best only when he keeps his mind as the master of his body; a clean body and a clear mind devoted to a high purpose are basic requirements for a Christian life; and ultimately, genuine culture is the outcome of knowledge and Christian character rather than the result of the knowledge of certain subjects or the acquiring of skills.

*September 23, 1899—*

The charter of the College was granted by the Court of Common Pleas of Lancaster County. This charter bore the names of Samuel H. Hertzler, Joseph H. Rider, Simon P. Engle, Joseph H. Eshleman, and Benjamin G. Groff, all of Elizabethtown. Groff donated the first ten acres of land for the college campus and, as a contractor, built Alpha Hall and Rider Memorial Hall.

*November 13, 1900, Heisey Auditorium,  
Market and Bainbridge Sts.—*

The first class in the history of Elizabeth-

town College met with six students enrolled—Kurvin Henry, York Co.; Warren Ziegler and Walter Kittinger, both of Montgomery Co.; and Rufus P. Bucher, John Boll and Willis Heisey, all of Lancaster Co. Heisey, who resides in Elizabethtown, is the sole survivor.

The first faculty was headed by G. N. Falkenstein, who acted as principal since the regular appointee, I. N. H. Beahm, Lordsburg, Calif., recovering from an illness, was prevented from taking his post for the first year. Other faculty members were Elizabeth Meyer, Bareville, and J. A. Seese, Virginia.

Courses were offered in Bible, history, languages, English, mathematics, penmanship, elocution, orthography, and music. These courses were categorized into Teaching, Literary, Scientific, and Classical departments, each requiring three years of study for completion.

After a week of study in Heisey Auditorium, the students moved to the home of Joseph H. Rider, Washington St., for two months.





ALPHA HALL

## *The College Today*

*January 22, 1901—*

Alpha Hall, the first building on what is now the campus of Elizabethtown College, was completed. Campus activities were centered here—it served as a dormitory, and housed classrooms and administrative offices.

The year 1906 marked another milestone in the college history—Rider Memorial Hall, through the generosity of Joseph Rider, was ready for use. Classrooms, dormitory rooms and the first college library were housed within its walls.



RIDER MEMORIAL HALL

FAIRVIEW HALL



STUDENT-ALUMNI GYMNASIUM

The enrollment increased until additional facilities were needed.

1921 marked the completion of Fairview Apartments, used primarily by married students and their families. Later, this became known as Fairview Hall, a dormitory for men.

In 1928 the Gibble Science Building offered additional classroom and laboratory space, and the following year the Alumni Gymnasium was completed.



ZUG MEMORIAL LIBRARY



NEW WOMEN'S RESIDENCE

After World War II the Business Education Building, North, South, and Center Halls were added. Zug Memorial Library appeared in 1950 and the New Women's Residence was completed in January, 1957. A new wing for the Gibble Science Building was dedicated last fall.



GIBBLE SCIENCE HALL



Development progressing . . . The Development Advisory Committee looks ahead. From left (standing) S. S. Wenger, J. Albert Seldomridge, Robert S. Young, and Earl Kurtz. Seated, H. E. Roffensperger, Pres. A. C. Bougher, and Joseph W. Kettering.

## *The College Tomorrow*

With increased enrollment the need for additional facilities has been recognized. Although definite completion dates have not been set, Elizabethtown College has established a far-reaching expansion program.

As we, on the 60th anniversary of the college, look into the future we are able to envision a dormitory for 250 men, a student union building-field house, a new Business Education building, and a chapel-auditorium.

The College continues to grow physically as it continues to uphold the basic principles of genuine culture which have characterized it for the past 60 years.

The New Men's Dormitory. . . . Scheduled to be under construction by summer and ready for occupancy by fall, 1960.





Members of the Board of Trustees met in October in the Zug Memorial Library. From left, they are: (seated) Paul Grubb, Elizabethtown; A. C. Bougher, Elizabethtown; Noah Sellers, Lineboro, Md.; Joseph W. Kettering, Elizabethtown; John G. Hershey, Lititz; Norman K. Musser, Columbia. (Standing) Cyrus Bucher, Biglerville; S. Clyde Weaver, East Petersburg; John M. Miller, Lititz; Horace E. Roffensperger, Elizabethtown; Chester H. Royer, York; Miss Ethel M. B. Wenger, Rexamont; Earl Kurtz, Elizabethtown; Miss Martha Bucher, Quarryville; I. Wayne Keller, Lancaster; Eli Stoltzfus, Phoenixville; Jacob L. Miller, York; and Galen Kilhefner, Elizabethtown.

Not pictured are: Howard Merkey, Manheim; J. Aldus Rinehart, West Englewood, N.J.; John F. Sprenkel, York; David Stambaugh, Long Island, N.Y.; Carl Zeigler, Lebanon; and S. S. Wenger, Lancaster.

Dr. Kettering is chairman of the Board, Mr. Sellers, vice chairman, and Mr. Hershey, secretary.

## *Trustees*

For six decades Elizabethtown College has been educating men and women for service. Many milestones can be found in the history of the College dating from that eventful year of 1899.

The College board of trustees has, perhaps, played the most important role in the accomplishment of each milestone.

Through the years it has been the duty of the trustees to carry out the desires of the original founders while making decisions that would further progress in the changing times.

They have always been concerned with expanding the facilities of the College to provide better education for more people.

At the annual meeting of the board of trustees, one of the chief items on the agenda was the development program. A recommendation calling for five additional buildings on the campus was approved.

Without the efforts of the trustees the College could not have maintained the standards expressed by the founders.

From their decisions and their activities, the public at large judges the College as a whole. The destiny of this institution and her students rests on their shoulders.

Thus, the trustees are the backbone of the College.

# *Administration and Faculty*

These our leaders, what do they give us? . . . wise  
counseling . . . capable guidance . . . good examples  
. . . patient instruction . . . workable precepts . . .  
fundamental concepts . . . faithful imparting of  
our heritage . . . useful experience . . . these they  
give us . . . to have and to keep and to use . . . as a  
foundation to build upon . . . they, through their  
dedication to youth . . . through their service . . .  
through their loyalty . . . give us of themselves.



# President

As one looks back over 60 years to 1899 when Elizabethtown College was chartered the time seems very short. But when one reflects over the individual years and the many significant events that transpired, a panorama of problems, anxieties, uncertainties and heart throbs comes to view.

Today, after 60 years of devotion and sacrifice to the principle expressed in the motto EDUCATE FOR SERVICE, Elizabethtown College has grown into a fully accredited educational institution with a total annual enrollment of over 1200 students and a faculty of more than 60 persons.

The future of Elizabethtown College in the decades ahead should be a great challenge to all. The student population and the financial resources of the service area of Elizabethtown College presents a challenge of almost unlimited proportions.

As the College moves into the decades ahead, our efforts need to be commensurate with our resources.

I am confident that if we succeed in doing this then our achievements will be characterized by growth which knows no low limits and a stature without near horizons.

A. C. Baugher



A. C. BAUGHER

*President of the College*

*Pd.B., Elizabethtown College, 1917; A.B., Elizabethtown College, 1922; B.S., Franklin and Marshall College, 1922; M.S., University of Pennsylvania, 1928; Ph.D., New York University, 1937; LL.D., Franklin and Marshall College, 1949; Graduate Student, Columbia University.*



A. C. Baugher  
Class of 1922



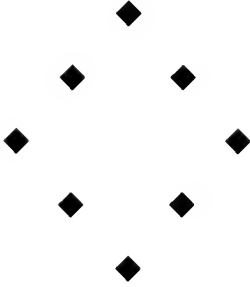
President Baugher enjoys a moment of relaxation with Mrs. Baugher.



## Dean

ROY E. MCAULEY

*Dean of the College  
B.S., McPherson College, 1944;  
B.D., Bethany Biblical Seminary, 1946; M.A.; University of  
Omaha, 1949; Ed.D., University of Denver, 1955.*



## Treasurer

EARL H. KURTZ

*Treasurer and Instructor in  
Business  
B.S., Elizabethtown College,  
1935; Temple University,  
Wharton School of Business of  
the University of Pennsylvania,  
M.A., New York University,  
1938.*



## Administrative

## Committee

Talking over campus expansion plans, the Administrative Committee, Wilbur Weaver, Earl Kurtz, President A. C. Baugher, Dean Roy McAuley, hold a conference session.



WILBUR E. WEAVER  
*Assistant Professor of Business  
 and Assistant to the Treasurer  
 B.S., Elizabethtown College,  
 1937; M.Ed., Temple Univer-  
 sity, 1942.*

*Assistant to the Treasurer*



VERA R. HACKMAN  
*Dean of Women and Associate  
 Professor of English  
 A.B., Elizabethtown College,  
 1925; A.M., Columbia Univer-  
 sity, 1936; Teachers' College  
 Professional Diploma, Colum-  
 bia University, 1950.*



*Dean of Women*

ARMON C. SNOWDEN  
*Instructor in Bible and Philos-  
 ophy and Acting Dean of Men  
 A.B., Elizabethtown College,  
 1951; B.D., Crozer Theologi-  
 cal Seminary, 1954; University  
 of Pennsylvania, Duke Univer-  
 sity.*



*Dean of Men*



*Registrar*

EMMA R. ENGLE

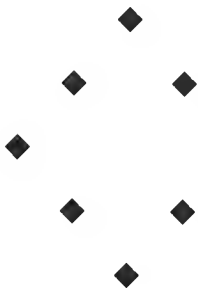
*Registrar and Instructor in English  
A.B., Elizabethtown College,  
1948; Student, Columbia Uni-  
versity.*



*Admissions*

D. PAUL GREENE

*Director of Admissions  
A.B., Bridgewater College,  
1946; B.D., Bethany Biblical  
Seminary, 1949.*



*Alumni*

CLARENCE G. ENTERLINE

*Assistant Professor of Business  
and Alumni Secretary  
B.S., Albright College, 1933;  
M.S., University of Pennsyl-  
vania, 1936; Graduate Student,  
University of Pennsylvania,  
University of New Hampshire,  
University of Maine, The  
Pennsylvania State University.*





*Development*



J. ALBERT SELDOMRIDGE  
*Director of Development Program*  
*A.B., Elizabethtown College,*  
*1952.*



*Administrative Assistant*

ROBERT S. YOUNG  
*Administrative Assistant*  
*Elizabethtown College, Lebanon Valley College, University of Pennsylvania.*

*Public Relations*



JAMES L. M. YEINGST  
*Instructor in Journalism and*  
*Director of Public Relations*  
*A.B., Elizabethtown College,*  
*1957.*

## Religion

### ROBERT A. BYERLY

*Associate Professor of Bible and Director of Religious Activities*

*A.B., Oklahoma A. and M. College, 1942; B.D., Bethany Biblical Seminary, 1946; A.M., Butler University, 1950; Graduate Student, Garrett Biblical Institute and Temple University.*



## Athletics

### IRA R. HERR

*Director of Athletics and Instructor in Physical Education*

*A.B., Franklin and Marshall College, 1916; Graduate Student, University of Pennsylvania and Temple University.*



## Librarian



## Librarian



### EMILY C. RAHTER

*Assistant Librarian*

*A.B., University of Mississippi, 1938; B.S. in L.S., Columbia University School of Library Service, 1946.*

### ALICE S. HEILMAN

*Librarian*

*B.S., Towson State Teachers' College, 1945; B.L.S., Columbia University, 1948; Graduate Student, Temple University.*



MARY P. ADAMS

*Instructor in History  
B.A., Radford College, 1950;  
M.A., University of Virginia,  
1952; Ph.D., University of Vir-  
ginia, 1958.*

## *The Faculty*

Three persons comprised the first faculty of Elizabethtown College in 1900. Through the years, as the College expanded, the size of the faculty grew. Today, six decades later, this number exceeds 40.

The tragedy of the Dutch airliner on August 14, 1958, caused changes to be made on the present faculty. Dean D. Paul Greene became Director of Admissions. Prof. Armon Snowden filled the position of acting Dean of Men. Ira Herr replaced Dean Greene as soccer coach.

New faces appearing on the campus this year were Dr. Mary Adams, Dr. and Mrs. Charles Rahter, and Dr. Donald Vosburgh. Dr. Adams joined the History Department, while Dr. Rahter taught English. Mrs. Rahter assumed duties in the library; Dr. Vosburgh implemented the Sociology Department.



BESSIE D. APGAR

*Associate Professor Biology  
A.B., Muskingum College,  
1923; M.S., University of  
Pittsburgh, 1926; Ph.D., Uni-  
versity of Pennsylvania, 1934.*

CHARLES S. APGAR

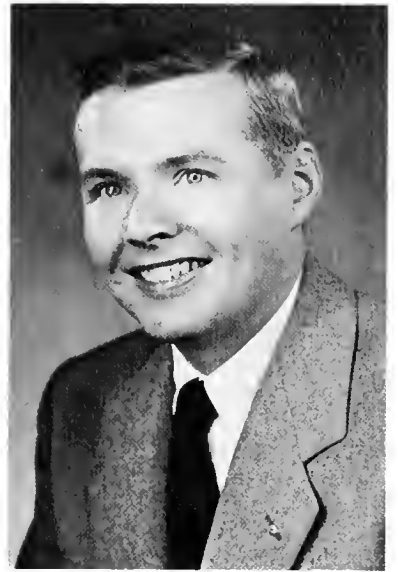
*Professor of Biology  
B.S., University of Pittsburgh,  
1926; M.S., University of Pitts-  
burgh, 1927; Ph.D., University  
of Pittsburgh, 1930.*





**JAMES M. BERKEBILE**

*Professor of Chemistry  
A.B., Manchester College,  
1934; A.M., The Ohio State  
University, 1935; Ph.D., The  
Ohio State University, 1951.*



**EDGAR T. BITTING**

*Assistant Professor of Business  
B.S., Elizabethtown College,  
1950; M.B.A., University of  
Pennsylvania, 1952.*

This past summer found such faculty members as Prof. Heilman, Prof. and Mrs. Enterline, Mrs. Herr, and Miss Eastlack pursuing graduate work in their particular fields.

In June, Prof. Albert Gray received his doctorate from the University of Pennsylvania.



**HUBERT M. CUSTER**

*Instructor in Physics  
B.S., Carnegie Institute of  
Technology, 1944; Graduate  
Student, Franklin and Marshall  
College.*





ELINOR EASTLACK

*Assistant Professor of Business Education*

*B.S., The Pennsylvania State University, 1945; M.Ed., The Pennsylvania State University, 1949.*

## The Faculty

Others increased their knowledge by traveling. In Europe, Dr. Schlosser viewed many scenes familiar to him from his studies of literature. New Mexico captured the interests of Dr. and Mrs. Apgar.

MILDRED H. ENTERLINE

*Assistant Professor of English A.B., Ursinus College, 1931; M.A., Northwestern University, 1938; Graduate Student, University of Pennsylvania, New York University, University of Maine, University of New Hampshire, The Pennsylvania State University.*

EDITH H. FELLENBAUM

*Instructor in Education A.B., Gettysburg College, 1921; M.A. Johns Hopkins University, 1957.*

NEVIN W. FISHER

*Professor of Music Graduate, Blue Ridge College, Department of Music-Piano, 1919, Voice 1920; Peabody Conservatory of Music, Teacher's Certificate, 1922; B.M., Eastman School of Music, University of Rochester, 1940; M.Mus., Northwestern University, 1947.*







**HENRY F. GINGRICH**  
*Part-time Instructor in Law*  
*A.B., Elizabethtown College,*  
*1949; LL.B., Temple University,*  
*1952.*

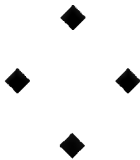


**ALBERT L. GRAY, JR.**  
*Professor of Business*  
*B.S., Drexel Institute of Technology,*  
*1939; M.B.A., Boston University,*  
*1940; Ph.D., University of Pennsylvania,*  
*1958.*



**CARL E. HEILMAN**  
*Associate Professor of Mathematics*  
*A.B., Lebanon Valley College,*  
*1929; A.M. Duke University,*  
*1940; Graduate Student, University of Chicago,*  
*Syracuse University, Temple University.*

Because of the changes which recently occurred in the scientific world, those of us associated with the College realize more than ever the value of the instruction offered by our faculty.



**KATHRYN N. HERR**  
*Instructor in French*  
*A.B., Lebanon Valley College,*  
*1925; School Library Certification,*  
*Temple University,*  
*1930; French Institute, The Pennsylvania State University,*  
*Summer, 1936; Graduate Student,*  
*University of Pennsylvania,*  
*1958.*





**PHARES H. HERTZOG**

*Part-time Instructor in Chemistry  
B.S., Bucknell University, 1910; M.A., Princeton University, 1914.*



**WARREN W. HOLLAND**

*Assistant Professor of Business  
B.S., University of Pennsylvania (Wharton School), 1928; Ed.M., Temple University, 1949.*



**ELMER B. HOOVER**

*Associate Professor of Education and Director of Teacher Training  
B.S., Juniata College, 1937; M.Ed., The Pennsylvania State University, 1939; Graduate Student, The Pennsylvania State University.*



**LOUISE K. KELLY**

*Associate Professor of English  
A.B., Skidmore College, 1936; M.A., The Pennsylvania State University, 1938; Ph.D., The Pennsylvania State University, 1951.*

Now, as never before, we can appreciate their efforts to awaken in us a joy in creative expression and knowledge.

We can look at the academic qualifications, the teaching ability, and the professional ability of our faculty with pride.



# The Faculty

NOAH M. KLAUSS  
*Director of the Band and Orchestra*  
*Elizabethtown College*



Members of the faculty appeared weekly throughout the academic year on the "College of the Air" program on WGAL-TV, Lancaster. Each Tuesday morning someone from the staff discussed a topic falling under the general theme of "The What, Why, and How of Our World."

EPHRAIM GIBBLE MEYER  
*Brethren Historical Librarian*  
*Pd.B., Elizabethtown College, 1919; Graduate Music Teachers' Course, Elizabethtown College, 1921; A.B., Elizabethtown College, 1924; Student American Conservatory of Music, Chicago; A.M., Columbia University, 1930.*

GERTRUDE ROYER MEYER  
*Instructor in Piano*  
*Graduate in Music, Western Maryland College, 1913; Student, Columbia University; Piano Clinic, New York City; Student Peabody Conservatory of Music.*

MARTHA MARTIN  
*Emeritus Instructor in Bible*  
*A.B., Elizabethtown College, 1924; Student, Bethany Biblical Seminary; Student, Biblical Seminary, New York; Graduate Student, University of Pennsylvania.*





ELINOR B. NEUMANN

*Instructor in German and English*

*A.B., Swarthmore College; M.A., Middlebury College; Graduate Student, Westhampton College for Women and Goethe University of Frankfurt-am-Main.*

## The Faculty

Other faculty personnel taught evening courses each week at the Harrisburg Center for High Education, an institution which Elizabethtown College helped initiate.

FREDERICK C. NEUMANN

*Professor of Languages*

*Ph.D. (Language), University of Vienna, 1921, Ph.D. (Political Science), University of Vienna, 1927; Graduate Student, University of Prague, University of Bristol, and University of Richmond.*



CHARLES A. RAHTER

*Associate Professor of English*

*A.B., Western Maryland College, 1949; M.A., University of Pennsylvania, 1951; Ph.D., University of Pennsylvania, 1958.*



CHARLES WILSON-RECTOR

*Part-time Instructor in Physics*

*Ph.B., University of Chicago, 1946; S.B. University of Chicago, 1949; Graduate Student, Massachusetts Institute of Technology, Franklin and Marshall College.*





WILHELM REUNING

*Professor of History and Political Science  
B.S., University of Pennsylvania, 1948; M.S., University of Pennsylvania, 1948; Ph.D., University of Pennsylvania, 1956.*



JULIA A. RISSER

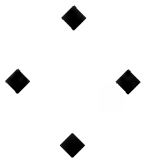
*Instructor in Physical Education  
B.S., Lock Haven State Teachers College, 1954; Graduate Student (Northwestern University, Wisconsin University), Pennsylvania State University.*



L. D. ROSE

*Historical Research Assistant  
A.B., Ursinus College, 1911; A.M., University of Pennsylvania, 1932; Graduate Student, University of Pennsylvania.*

Still others worked closely with student groups by serving as advisors for student clubs and activities. The Apgars enriched the cultural content of the campus by presenting a bust, the first of its kind, to the College.



RALPH WIEST SCHLOSSER

*Professor of English  
Pd.B., Elizabethtown College, 1911; A.B., Ursinus College, 1911; A.M., Columbia University, 1922; Litt.D., Ursinus College, 1932; Student, Bethany Biblical Seminary; Graduate Student, Columbia University; University of Pennsylvania.*





HELEN J. SHEELY

*Part-time Instructor in Art  
B.A., The Pennsylvania State  
University, 1944; B.S., Kutz-  
town State Teachers' College,  
1951.*



DONALD P. SMITH

*Instructor in Physical Educa-  
tion  
B.S., University of Mississippi,  
1950; Graduate Student, Uni-  
versity of Mississippi.*



O. F. STAMBAUGH

*Professor of Chemistry  
B.S., Lebanon Valley College,  
1930; M.S., The Pennsylvania  
State University, 1933; Ph.D.,  
The Pennsylvania State Uni-  
versity, 1943.*

Two members of the faculty turned out major literary efforts during the year. Dr. Neumann published his autobiography, *Escape From Terror*, and Mrs. Enterline completed a review of religious dramas.

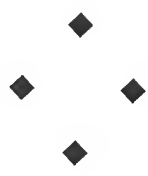
Coach Herr was named Sports Headliner of the Year by the Lancaster Sportswriters and Broadcasters for "his lifetime contribution to area sports."

Dr. Berkebile was granted a two-year leave of absence to assist in improving the education system on Formosa under the auspices of the International Cooperation Association.



N. FRANKLIN STUMP

*Professor of Education  
B.S., University of West Vir-  
ginia, 1921; A.M., Yale Uni-  
versity, 1923; Ph.D., Cornell  
University, 1935; Graduate  
Student, Columbia University  
and New York University.*



## The Faculty

Virtually all faculty members were involved in the preparation of reports for the Middle States Association of Colleges and Secondary Schools, which evaluated the College in February.

Members of the staff and faculty played many roles during the year: teacher, adviser, confidant, friend. Each one we found to possess certain personality traits that were his alone. From each we learned something, both in and outside of the classroom.

**DONALD R. VOSBURGH**  
*Assistant Professor of Sociology*  
B.S., Utica College of Syracuse University, 1951; A.M., Syracuse University, 1953; D.S.S., Syracuse University, 1958.



**CHARLES W. WEAVER**  
*Part-time Instructor in Medical Laboratory Technique*  
B.S., Elizabethtown College, 1926; M.D., Hahnemann Medical College, 1930; Member, Lancaster General Hospital Staff.



**BRUCE M. TYNDALL**  
*Instructor in Mathematics*  
B.S., State University of Iowa, 1955; Roosevelt University; M.S., State University of Iowa, 1956.

**J. ATLEE YOUNG**  
*Part-time Instructor in Organ*  
Columbia College, Peabody Conservatory, Northwestern University, Christiansen Choral School.



# The Staff



Miss Vera Hackman, Dean of Women, and Martha Dunmire, school nurse, go over student record cards in Miss Hackman's office.



Housemothers Jessie Casner, Grace Allan, and Mary Cox decorate Alpha Hall living room for the Thanksgiving season.



Members of the janitorial staff confer in the gym. They are, left to right, Walter E. Brown, superintendent of buildings and grounds; Warren Grubb, Kirby Bradley, LeRoy Fackler, Raymond Longenecker, Harry Heisey, and Harry E. Blough, Sr.

Cafeteria staff workers prepare salads for the dining hall. Left to right, they are Miss Betty Holsinger, director of food service, Mrs. Esther McBeth, Mrs. Mary Longenecker, Mrs. Ruth Kipp, Mrs. Mary Hackman, and Mrs. Ruth Ebersale.



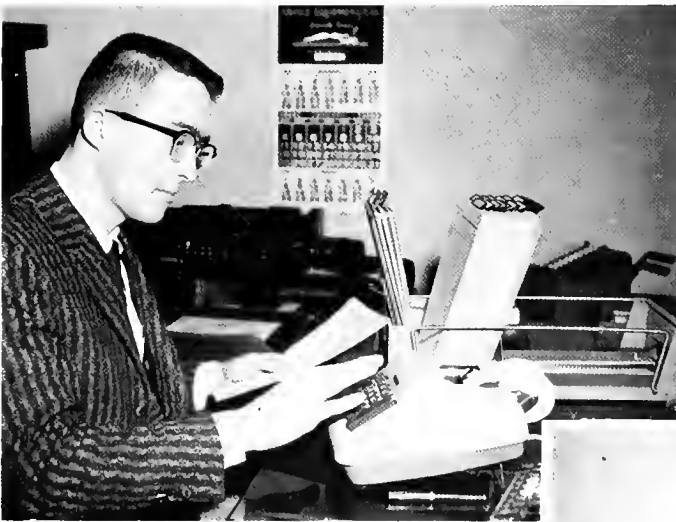




Mrs. James Miller, Mrs. William Lewis, Mrs. Ralph Horne, and Miss Gladys Hixson take a break in the midst of a busy day in the offices.



Checking records in the Business Office are Mrs. Harry Rohrer, Miss Mary Ann Snavey, Miss Martha Farver, standing; and Miss Marialice Myers and Miss Lois Garber, seated.



Figuring accounts is only one of the tasks that occupies Mr. J. Robert Hallinger, bookkeeper.

Secretaries Mrs. Melvin Mumaw, Mrs. Harold Balmer, and Mrs. Paul Hollinger discuss their duties in a conference in the Admissions Office.



# *The Student Body*

We came to Elizabethtown to learn . . . we will leave, having learned . . . not all we will ever know . . . but for some, the major part of our formal education . . . is gained here . . . there is so much benefit in our learning . . . both technical and cultural knowledge . . . technical, that which we utilize in our work . . . cultural, that which we draw from in our enjoyment of life . . . both are necessary . . . both are provided at Elizabethtown . . . let us hope that, when we leave here . . . we will use our education . . . to enrich all phases of our lives . . . and the lives of those around us.





PRESIDENT

ROBERT A. MILLER  
Penbrook, Pa.  
*B.S. in Business Administration*  
SCA 1, 2, 3, 4; Class President  
3, 4; Class Treasurer 2.



VICE-PRESIDENT

H. MARSHALL POMROY  
Rockaway, New Jersey  
*B.S. in Accounting*  
Student Senate 3, 4; Committee  
on Men's Affairs 2; Conestogan  
Business Manager 4; Political  
Science Club 1, 2, 3, 4; SCA 3;  
Vice President of Class 4; Vice  
President of Senate 3; Vice Pres-  
ident of Political Science Club 4.

## Class of 1959

SECRETARY



MARY JEAN ESPENSHADE  
Elizabethtown, Pa.  
*B.S. in Elementary Education*  
Etownian Staff 3; Conestogan  
Staff 3, 4; Conestogan Editor 4;  
SEAP 3, 4; WAA 3; Class Sec-  
retary 3, 4.

TREASURER



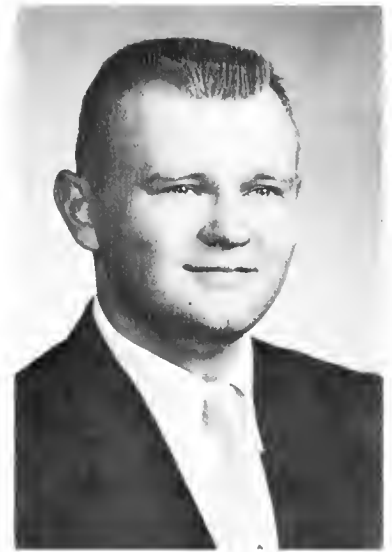
MORTON C. FEDER  
York, Pa.  
*B.S. in Business Administration*  
Business Manager of Etownian  
4; Orchestra 1, 2; Political  
Science Club 3, 4; SCA 1, 2, 3,  
4; Class Treasurer 1, 3, 4; Pep  
Band 1, 2.



**RICHARD W. ANNIBALI**  
Palmyra, Pa.  
*B.S. in Business Administration*  
Transfer Student.



**DAVID C. ANWYLL**  
Harrisburg, Pa.  
*B.S. in Secondary Education*  
Wrestling 1, 2, 3, 4; Soccer 1, 2;  
Baseball 1; Varsity E 1, 2, 3, 4.

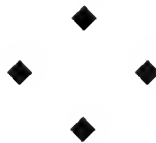


**EDWARD C. APPEL**  
Lancaster, Pa.  
*A.B. in Liberal Arts*  
Transfer Student.

**DAVID L. ARNOLD**  
York, Pa.  
*B.S. in Business Administration*  
Transfer Student.



**RUTH ANN ARNOLD**  
York, Pa.  
*B.S. in Business Education*  
SEAP 1, 2, 3, 4; Chorus 1; SCA  
1, 2, 3, 4; LSA 1, 2, 3, 4; Varsity  
E 3, 4; WAA 3, 4; Hockey 1;  
Manager of Hockey 2, 3, 4; Man-  
ager of Basketball 2; Residence  
Assistant 4; LSA Secretary 3;  
LSA Vice-president 4.



# Class of 1959



RALPH S. BAKER  
Hudson, New York  
*B.S. in Science*

Student Senate 2, 3; Committee on Men's Affairs 4; SCA 1, 2, 3, 4; Phi Beta Chi 1, 2, 3; Varsity E 1, 2, 3, 4; Wrestling 1, 2, 3; Dormitory Proctor 2, 3, 4; Assistant to Mathematics Department 4; Treasurer of Student Senate 3.



CLARA L. BARRETT  
Norfolk, Virginia  
*A.B. in Liberal Arts*

Etownian Staff 3, 4; Conestogan Staff 3, 4; SEAP 3, 4; Chorus 2; Political Science Club 4; SCA 1, 2, 3, 4; LSA 2, 3, 4; WAA 2, 3, 4; Hockey 4; SCA Cabinet Member 4; Secretary of District 3 Christian Association 4; Treasurer SEAP 4.

HARRY M. BAUM  
Middletown, Pa.  
*B.S. in Science*  
Laboratory Assistant.

GARY B. BEARD  
Cornwall, Pa.  
*A.B. in Liberal Arts*

WILLIAM F. BILLOW  
Elizabethtown, Pa.  
*B.S. in Science*  
Transfer Student.





**JAMES H. BOOTH**  
Mt. Joy, Pa.  
*B.S. in Science*



**KENNETH L. BOWERS**  
Landisville, Pa.  
*A.B. in Liberal Arts*  
Committee on Men's Affairs 3;  
Etownian Staff 1, 2, 3, 4; Cones-  
togan Staff 1, 2, 3; Etownian Edi-  
tor 4; SEAP 3, 4; SCA 1, 2.

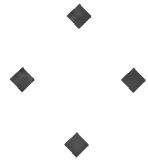


**WILLIAM E. BRENNEMAN**  
York, Pa.  
*B.S. in Business Administration*  
Transfer Student.

**J. DANIEL BRENSINGER**  
Denver, Pa.  
*A.B. in Liberal Arts*  
Etownian Staff 1, 2; SEAP 2, 3,  
4; Treasurer of SEAP 3; SCA 1,  
2, 3; LSA 1, 2, 3, 4.



**MADELINE E. BRIGHTBILL**  
Gloucester, New Jersey  
*B.S. in Elementary Education*  
Conestogan Staff 4; SEAP 2, 4;  
Chorus 1, 2; SCA 1, 4; WAA 2;  
Residence Head 4; House Presi-  
dent 3; Student Senate Social  
Committee Chairman for on-cam-  
pus affairs 4.





MARGARET G. BROWN  
Annapolis, Maryland  
*B.S. in Business Administration*  
Conestogan Staff 3, 4; Chorus 1;  
Political Science Club 3, 4; Sec-  
retary Political Science Club 4;  
SCA 1, 2, 3, 4; LSA 2, 3, 4;  
WAA 3, 4; Hockey 4; Freshman  
Initiation Committee 3.



LAWRENCE E. BRYDIA  
Philadelphia, Pa.  
*B.S. in Science*  
SCA 1; Chemistry Laboratory  
Assistant 3, 4.



TERRY L. BUSH  
Camp Hill, Pa.  
*B.S. in Business Administration*  
Wrestling 1, 2, 3, 4; Tennis 1;  
SCA 1, 2.

## *Class of 1959*

NED M. BUTT  
Harrisburg, Pa.  
*B.S. in Science*  
Phi Beta Chi 2, 3, 4; Physics  
Laboratory Assistant 4; Transfer  
Student.

DARLINGTON EMERSON CALE  
Harrisburg, Pa.  
*B.S. in Business Administration*

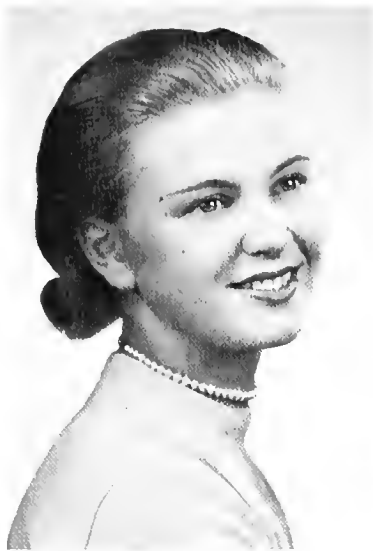
COLVIN C. CARTER  
Sunderland, Maryland  
*B.S. in Science*  
Student Senate 4; Phi Beta Chi 2,  
3, 4; Varsity E 2, 3, 4; Wrestling  
1, 2, 3; President of Class 1, 2;  
Biology Laboratory Assistant 2.







WILLIAM H. COLEGROVE  
Ridgeway, Pa.  
*B.S. in Business Administration*



SARA COOPER  
Lancaster, Pa.  
*B.S. in Elementary Education*  
Political Science Club 2, 3; SCA  
1, 2.



YVONNE E. COSNER  
Elizabethtown, Pa.  
*B.S. in Elementary Education*  
SCA 1, 2, 3, 4; Tennis 1, 2, 3;  
SEAP 2, 3.

GLENN CRUM  
Newport, Pa.  
*B.S. in Secondary Education*  
Baseball 2, 3, 4; LSA 2, 3; Varsity  
E 2, 3, 4.



MYRTLE S. DAVIS  
Harrisburg, Pa.  
*B.S. in Elementary Education*



SHELDON A. DENT  
Norwood, Pa.  
*B.S. in Business Administration*  
SCA 1; Varsity E 1, 2, 3, 4;  
Basketball 1, 2, 3, 4; Baseball 1,  
2, 3, 4.



# Class of 1959



WILBERT DOURTE  
Lebanon, Pa.  
*A.B. in Liberal Arts*

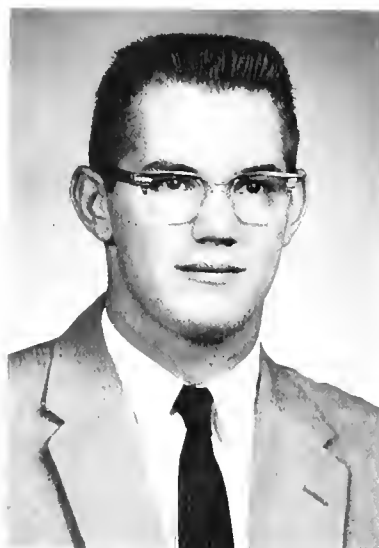


LARRY E. DROMGOLD  
Blain, Pa.  
*B.S. in Business Administration*  
Conestogan Staff 4.

MARTHA DUNMIRE  
McVeytown, Pa.  
*B.S. in Nursing*  
Chorus 3, 4; Orchestra 3, 4; SCA  
3; CBYF 3, 4; College Nurse 3,  
4; Lab Assistant in Nursing Tech-  
niques 3, 4; Transfer Student.



JAMES D. EBY  
Kinzer, Pa.  
*B.S. in Science*  
SCA 1, 2, 3, 4; Phi Beta Chi 2,  
3, 4; Residence Assistant 3; Phys-  
ics Laboratory Assistant 3, 4.



JOHN E. ENGLE  
Palmyra, Pa.  
*B.S. in Science*  
Chorus 3; SCA 4.





ORRIE FEITSMA  
Newton, New Jersey  
*A.B. in Liberal Arts*  
Sock and Buskin 4; SEAP 3;  
Choir 1, 2; Chorus 1, 2, 4; SCA  
1, 2, 3.



WILLIAM R. FOX  
Lewistown, Pa.  
*B.S. in Science*  
Biology Lab Assistant 4.



JERALD L. GARLAND  
Chambersburg, Pa.  
*A.B. in Liberal Arts*  
Conestogan Staff 4; Chorus 1, 2;  
SCA 1, 2; CBYF 1, 2, 3, 4; Var-  
sity E 4; Tennis 2, 3, 4; Assistant  
Director Junior Show 3.

EDWIN W. GEIGER  
Harrisburg, Pa.  
*B.S. in Secondary Education*  
Committee on Men's Affairs 4;  
SEAP 4; SCA 3, 4; Varsity E 4;  
Basketball 1, 2, 3, 4.



JOHN R. GRIMM  
Elizabethtown, Pa.  
*B.S. in Business Administration*  
SEAP 4.





LIGA GRINBERGS  
Souderton, Pa.  
*A.B. in Liberal Arts*  
Hockey 1; SCA 1, 2; Chorus 1,  
2, 3, 4; Choir 1, 2, 3, 4; May  
Court Maid of Honor 4.



LARRY C. GRING  
Harrisburg, Pa.  
*B.S. in Business Administration*



RAYMOND L. GROFF  
Manheim, Pa.  
*A.B. in Liberal Arts*  
SEAP 3; Eta Gamma Kappa 3, 4;  
SCA 3, 4; Bible Club 3, 4; Trans-  
fer Student.

## *Class of 1959*

RUTH ANN GULYAS  
Huntingdon Valley, Pa.  
*B.S. in Elementary Education*  
SEAP 3, 4; Chorus 3, 4; SCA 3;  
Transfer Student.

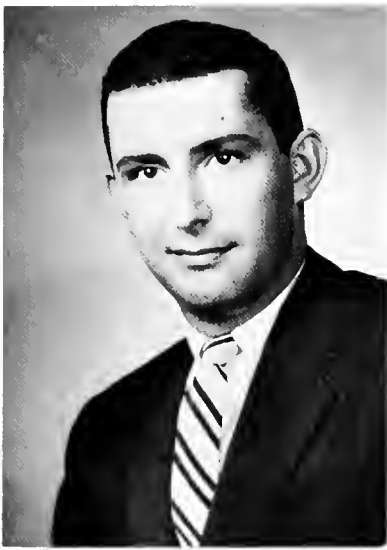


MARGARET E. HAINES  
Elizabethtown, Pa.  
*B.S. in Elementary Education*  
SEAP 2; WAA 1; Hockey 1.



JAMES C. HARRIS  
Elizabethtown, Pa.  
*A.B. in Liberal Arts*





KARL C. HASSLER  
York, Pa.  
*B.S. in Business Administration*  
Transfer Student.

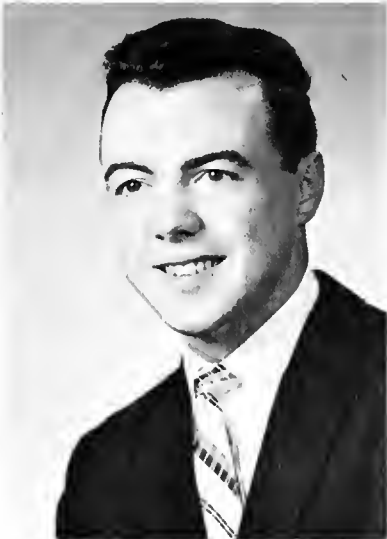


JACK L. HEDRICK  
Glen Rock, Pa.  
*B.S. in Science*  
Student Senate 4; President-Student Senate 4; SCA 1, 2, 4; Varsity E 4; Basketball 1, 2, 3, 4; Dormitory Proctor 3, 4; Chemistry Lab Assistant 2, 3.



RONALD P. HENDRICKS  
Harleysville, Pa.  
*A.B. in Liberal Arts*  
SEAP 4; Choir 1; Chorus 1, 2; 4; SCA 1, 2, 3, 4; CBYF 1, 2, 3, 4; Manager of Baseball Team 1.

G. DONALD HESS  
Pequea, Pa.  
*B.S. in Business Administration*  
SCA 2, 3, 4.



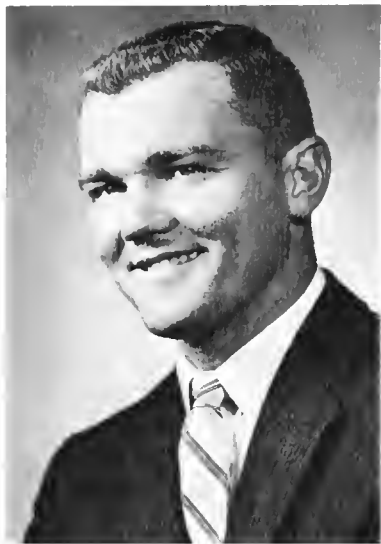
ROBERT B. HESSER  
Lancaster, Pa.  
*B.S. in Science*  
SCA 1, 2; Varsity E 2, 3, 4; Baseball 1, 2, 4.



MARGARET A. HOSTETTER  
Thomasville, Pa.  
*B.S. in Science*  
Etownian Staff 2, 3; Chorus 1; Political Science Club 1, 2; Phi Beta Chi 2, 3, 4; WAA 1, 2; Assistant Editor of Etownian 2.



## Class of 1959



CHARLES E. IMBODEN  
Harrisburg, Pa.  
*B.S. in Business Administration*



LOUIS C. JACOBY  
Kennett Square, Pa.  
*B.S. in Business Administration*  
Transfer Student.

BEVERLY A. JERRELL  
Millville, New Jersey  
*B.S. in Business Administration*  
Conestogan Staff 3, 4; Sock and  
Buskin 3, 4; Historian of Sock  
and Buskin 4; Chorus 1, 2; SCA  
2, 3, 4; House President 4; Li-  
brary Assistant 2, 3, 4.

ARLAN G. KELLER  
Middletown, Pa.  
*B.S. in Business Administration*

THOMAS N. KING, JR.  
Harrisburg, Pa.  
*B.S. in Business Administration*





DONALD E. KNAUB  
York, Pa.

*A.B. in Liberal Arts*  
Sock and Buskin 3, 4; President  
Sock and Buskin 4; Choir 2, 3;  
Chorus 2, 3; SCA 1, 2, 3; CBYF  
1, 2, 3, 4; President CBYF 4.

NANCY L. KURTZ  
Richland, Pa.

*B.S. in Elementary Education*  
SEAP 4; Chorus 1, 2; Orchestra  
1, 3; SCA 1, 2, 3, 4; CBYF 1, 2,  
3, 4; Varsity E 2, 3, 4; WAA 3,  
4; Hockey 1, 2, 3, 4; Secretary  
of SCA 4.

WILLIAM C. LARISH  
Hershey, Pa.

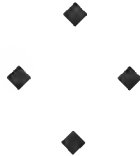
*B.S. in Business Administration*  
Transfer Student.

RUSSELL C. LEFEVRE, JR.  
Vineland, New Jersey

*B.S. in Science*  
Political Science Club 2, 3, 4;  
SCA 3; Track 2, 3.

DIANA L. LEISTER  
McAlisterville, Pa.

*B.S. in Business Education*  
SEAP 3, 4; Chorus 1, 2, 3; Or-  
chestra 2; SCA 1, 2, 3; CBYF,  
3; Cheerleader 1; Manager of  
Hockey Team 3, 4.





ELIZABETH LOHR  
Indian Head, Pa.  
*B.S. in Elementary Education*  
Committee on Women's Affairs 3;  
SEAP 3, 4; Choir 3, 4; Chorus 2,  
3; SCA 2, 3, 4; CBYF 3, 4; WAA  
2, 4; Residence Assistant 1, 2, 3.



RICHARD P. MARKOWITZ  
Royersford, Pa.  
*B.S. in Science*  
Committee on Men's Affairs 3;  
Etownian Staff 4; SCA 1, 2, 3;  
Phi Beta Chi 2, 3; Freshman In-  
itiation Committee 3.

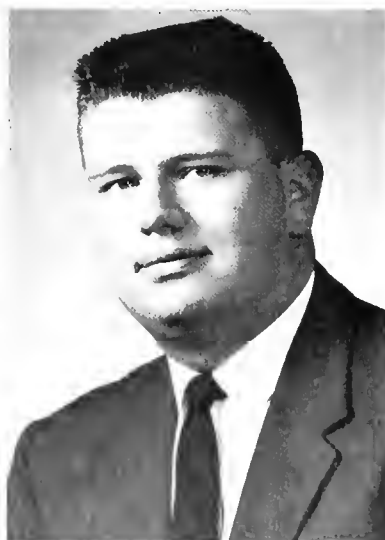


EARL W. MELLOTT  
McConnellsburg, Pa.  
*B.S. in Business Administration*  
Soccer 1, 2, 3, 4.

RICHARD G. MILLER  
Elizabethtown, Pa.  
*A.B. in Liberal Arts*  
Transfer Student.



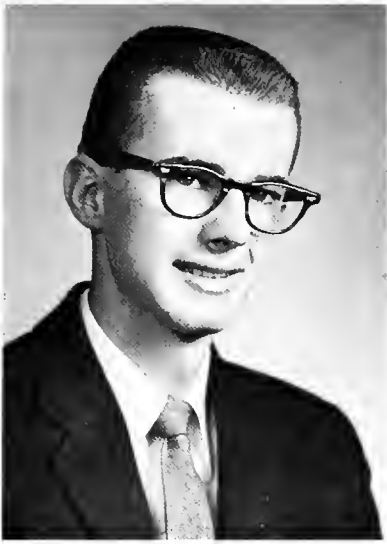
DONALD E. MONN  
Bethesda, Maryland  
*B.S. in Chemistry*  
Sock and Buskin 1, 2, 3, 4; SCA  
1; Phi Beta Chi 2, 3, 4; President  
of Phi Beta Chi 4; Chemistry Lab  
Assistant 1, 2, 3, 4.



PHYLLIS A. MOSER  
Thurmont, Maryland.  
*B.S. in Elementary Education*  
SCA 1, 2, 3, 4; Varsity E 3, 4;  
WAA 2, 3, 4; Field Hockey 1, 2,  
3, 4; Girls' Basketball 1, 2, 3, 4;  
Secretary Varsity E 4; Intra-  
Mural Chairman WAA 3; Co-  
Captain Basketball Team 3; May  
Court 1, 2, 3; May Queen 4.



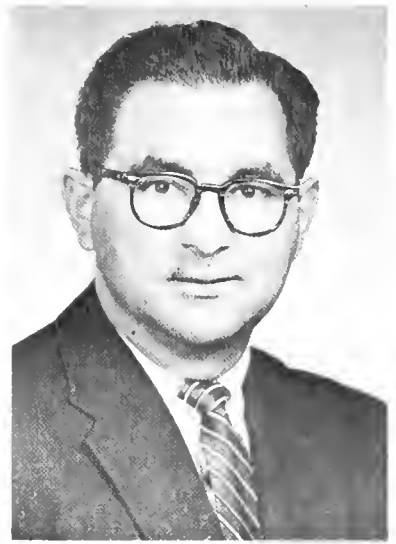




JERRY L. MOTTER  
Middletown, Pa.  
*B.S. in Science*



YVONNE A. MOWREY  
Kimberton, Pa.  
*B.S. in Elementary Education*  
Conestogan Staff 4; SEAP 3, 4;  
SCA 3, 4.



DENNIS L. MYERS  
York, Pa.  
*B.S. in Business Administration*

## *Class of 1959*

PATRICIA A. NASE  
Tylersport, Pa.  
*B.S. in Elementary Education*  
SEAP 2, 3, 4; Chorus 2, 3, 4;  
SCA 1, 2, 3, 4; LSA 1, 2, 3, 4;  
Secretary-Treasurer LSA 2;  
WAA 3, 4; Residence Assistant 2.

HELEN M. OBER  
New Enterprise, Pa.  
*B.S. in Elementary Education*  
SEAP 2, 3, 4; Chorus 2, 3, 4;  
SCA 2, 3, 4; Transfer Student.

BETTY L. PAULES  
Mechanicsburg, Pa.  
*B.S. in Nursing*



# Class of 1959



JANET M. PAULES  
Mechanicsburg, Pa.  
*B.S. in Nursing*



WILLIAM G. PENSYL, III  
Elizabethtown, Pa.  
*B.S. in Elementary Education*  
Basketball 1, 2, 3, 4; Baseball  
3, 4.

MARJORIE S. PRICE  
Souderton, Pa.  
*B.S. in Elementary Education*  
SEAP 3, 4; Chorus 1, 2, 3, 4;  
SCA 1, 2, 3; CBYF 1, 2, 3, 4;  
Secretary of CBYF 3; House  
President 3.

ROBERT H. F. PETERSON  
Middletown, Pa.  
*B.S. in Science*

OSCAR N. PUMAREJO  
Bayamon, Puerto Rico  
*A.B. in Liberal Arts*





**JAMES W. RAHN**  
 Elizabethtown, Pa.  
*B.S. in Business Administration*



**R. KENT REPLOGLE**  
 Roaring Spring, Pa.  
*B.S. in Secondary Education*  
 Etownian Staff 3, 4; Conestogan Staff 4; Sock and Buskin 1; SEAP 1, 2, 3, 4; Political Science Club 1; SCA 1, 2, 3, 4; CBYF 1, 2, 3, 4; Varsity E 1, 2, 3, 4; President-Varsity E 3, 4; Basketball 1, 2, 3, 4; Tennis 1, 2, 3, 4; Captain of Tennis Team 3; Dormitory Proctor 3, 4.



**JOAN RIGLER**  
 Woodbury, New Jersey  
*A.B. in Liberal Arts*  
 Chorus 1, 2; Orchestra 1, 2, 3; SCA 1, 2, 3, 4; Varsity E 2, 3, 4; WAA 2, 3, 4; Hockey 1, 2, 3; Basketball 1, 2, 3, 4.

**JEANETTE L. RISSER**  
 Doylestown, Pa.  
*B.S. in Elementary Education*  
 President Committee on Women's Affairs 4; Conestogan Staff 2; Secretary Sock and Buskin 4; SEAP 4; Political Science Club 3; SCA 1, 3, 4; Varsity E 3, 4; WAA 2, 3, 4; Field Hockey 1, 2, 3, 4; Manager Girls' Basketball 3; Cheerleader 1, 2, 4; May Court 3, 4.

**JEAN ANNE ROGERS**  
 Royersford, Pa.  
*B.S. in Elementary Education*  
 Conestogan Staff, 4; SEAP 1, 2, 3, 4; SCA 1, 2, 3, 4; WAA 2, 3, 4; Hockey 2, 3, 4; Cheerleader 1, 2, 3, 4; Basketball 2, 3, 4; Residence Assistant 3, 4; Dormitory Proctor 4; Senate Social Committee 3, 4; Captain-Hockey 4; President WAA 3; May Court 4.





JOYCE A. SCHAFFNER

York, Pa.

*B.S. in Science*

Student Senate 4; Sock and Buskin 3, 4; Chorus 1; Political Science Club 1, 2, 3, 4; SCA 1, 2; LSA 1; Hockey 3, 4; Library Assistant 3, 4; Secretary-Treasurer Political Science Club 2, 3.



CAROLYN A. SCHNEIDER

Doylestown, Pa.

*B.S. in Elementary Education*

SEAP 1, 4; Chorus 3; SCA 1, 2, 3, 4; Varsity E 4; WAA 3, 4; Hockey 2, 3, 4; Basketball 3, 4.



EDWARD E. SCHOPF

Mountville, Pa.

*A.B. in Liberal Arts*

Sock and Buskin 3, 4; College Choir 3, 4; Eta Gamma Kappa 2, 3, 4; Transfer Student.

## *Class of 1959*

LARRY SEIDERS

Elizabethown, Pa.

*A.B. in Liberal Arts*

ADELAIDE E. SHADE

Harrisburg, Pa.

*B.S. in Nursing*

Transfer Student.

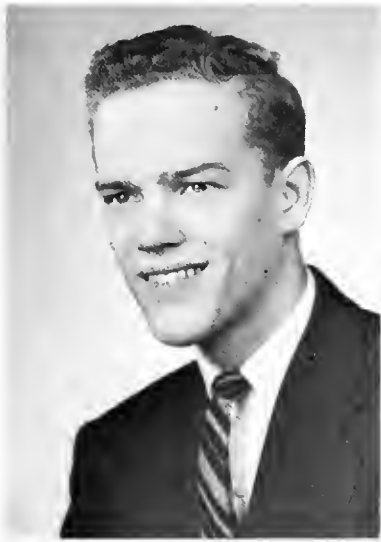
CLAIR L. SHAFER

Red Lion, Pa.

*A.B. in Liberal Arts*

Transfer Student.





BRUCE W. SLAYBAUGH  
York, Pa.  
*B.S. in Business Administration*  
SCA 1, 2; LSA 1, 2, 3, 4.



DON R. SLONAKER  
Glen Rock, Pa.  
*B.S. in Business Administration*  
Conestogan Staff 4; Chorus 1;  
SCA 1, 2, 3, 4; LSA 1, 2, 3.



EDWARD B. SMITH  
Hershey, Pa.  
*B.S. in Business Administration*  
Transfer Student.

BEVERLY J. STYER  
Lancaster, Pa.  
*A.B. in Liberal Arts*  
Committee on Women's Affairs  
4; Etownian Staff 3, 4; Conestogan  
Staff 1, 3, 4.



ERNEST G. SUNDAY  
Hershey, Pa.  
*B.S. in Secondary Education*  
Transfer Student.



RUBY C. SYKES  
Norfolk, Virginia  
*B.S. in Science*  
Conestogan Staff 4; SEAP 3, 4;  
Chorus 1, 2; Political Science  
Club 4; SCA 1, 2, 3; WAA 3, 4;  
House President 4.





BERNARD A. THOME  
Mt. Joy, Pa.  
*B.S. in Secondary Education*  
SEAP 4; Varsity E 4; Cross  
Country 3, 4.

## Class of 1959



JERE THOME  
Mt. Joy, Pa.  
*B.S. in Business Administration*

GERALD R. TOME  
Hummelstown, Pa.  
*B.S. in Business Administration*  
Transfer Student.



GERALD H. TRISSLER  
Conestoga, Pa.  
*B.S. in Business Administration*



RONALD E. VARNER  
Windber, Pa.  
*B.S. in Science*  
Committee on Men's Affairs 3;  
Etownian Staff 3; SCA 1, 2, 3, 4;  
Vice President of Class 3.





RUTH E. VARNER  
Windber, Pa.  
*B.S. in Elementary Education*  
Committee on Women's Affairs  
3, 4; SEAP 1, 2, 3, 4; Secretary  
SEAP 3; President SEAP 4;  
Chorus 1, 2; SCA 1, 2, 3, 4;  
CBYF 1, 2, 3, 4; WAA 1, 2;  
Residence Head 3, 4.



STEPHEN VULICH  
Steelton, Pa.  
*B.S. in Science*



PAUL S. VULOPAS  
Lancaster, Pa.  
*B.S. in Business Administration*

LOREN L. WAGNER  
Florin, Pa.  
*B.S. in Business Administration*  
Orchestrator 3; SCA 3; College  
Combo 3; Transfer Student.



MARILYN K. WARD  
Mechanicsburg, Pa.  
*B.S. in Business Education*  
SEAP 3, 4; Chorus 1; Orches-  
tra 1, 2, 3; Political Science Club  
4; SCA 1, 2; LSA 2, 3, 4; Home-  
coming Court 4.





CATHERINE L. WEAVER  
 Manheim, Pa.  
*B.S. in Elementary Education*  
 Conestogan Staff 4; SEAP 4;  
 SCA 1, 2, 3, 4; CBYF 4; Varsity  
 E 2, 3, 4; WAA 2, 3, 4; Field  
 Hockey 1, 2, 3, 4; Girls' Basket-  
 ball 2, 3, 4.



CHARLES WEAVER  
 Manheim, Pa.  
*B.S. in Science*  
 Choir 1, 3, 4; College Quartette  
 3, 4; Tennis 1, 2.



DANEEN K. WEBB  
 Lancaster, Pa.  
*B.S. in Secondary Education*

## *Class of 1959*

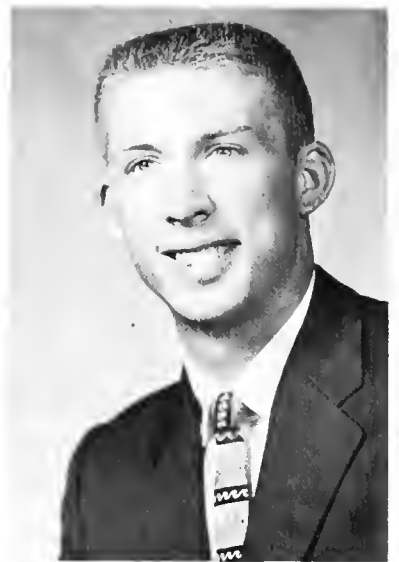
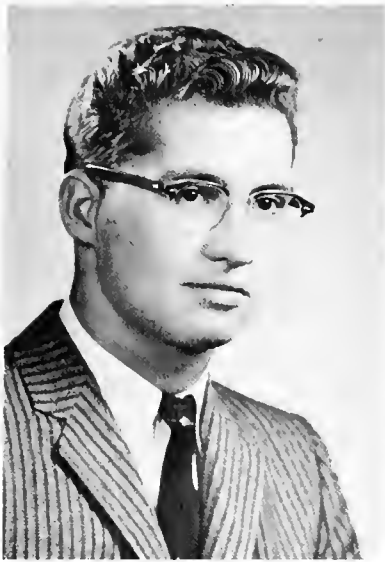
GEORGE C. WEDDLE  
 Elizabethtown, Pa.  
*B.S. in Secondary Education*  
 SEAP 4; Eta Gamma Kappa 3,  
 4; SCA 3, 4; CBYF 3, 4; Soccer  
 3; Treasurer SCA 4; Transfer  
 Student.

RICHARD K. WILLIAMS  
 Middletown, Pa.  
*A.B. in Liberal Arts*  
 SEAP 3, 4; Eta Gamma Kappa  
 1; SCA 1, 2, 3, 4.

GENE R. WISE  
 Ephrata, Pa.  
*B.S. in Business Administration*  
 Varsity E 1, 2, 3, 4; Soccer 1, 2,  
 3, 4; Baseball 1, 2, 3, 4.







KENNETH J. WISE  
Gap, Pa.  
*B.S. in Science*  
SCA 1, 3, 4; Chemistry Laboratory Assistant 2, 3, 4.

H. EDWARD WISEHAUPT  
Linglestown, Pa.  
*B.S. in Business Administration*

CARL W. ZEIGLER  
Lebanon, Pa.  
*B.S. in Science*  
Student Senate 2; SCA 1, 2, 3, 4; Phi Beta Chi 2, 3, 4; Vice-President of Phi Beta Chi 4; Varsity E 3, 4; Cross Country 2, 3.

DALE R. ARNSBERGER  
York, Pa.  
*B.S. in Elementary Education*

MATTHEW M. DOUGLAS, JR.  
Harrisburg, Pa.  
*B.S. in Business Administration*

HAYES B. GIRVIN  
Middletown, Pa.  
*B.S. in Secondary Education*

MAYNARD GRUNSTRA  
Elizabethtown, Pa.  
*A.B. in Liberal Arts*

WILLIAM C. HAMIL  
McConnellsburg, Pa.  
*B.S. in Business Administration*

J. MALCOLM HERSHEY  
Elizabethtown, Pa.  
*A.B. in Liberal Arts*

V. CELIA LASCARIDES  
Lancaster, Pa.  
*A.B. in Liberal Arts*

*Seniors  
not  
pictured*

NANCY J. LEARN  
Stroudsburg, Pa.  
*A.B. in Liberal Arts*

RICHARD E. SHARPLES  
Middletown, Pa.  
*A.B. in Liberal Arts*

GERALD L. SIMMERS  
Campbelltown, Pa.  
*B.S. in Science*

GEORGE M. SMITH  
York, Pa.  
*A.B. in Liberal Arts*

RUSSELL T. TRIMMER  
Elizabethtown, Pa.  
*A.B. in Liberal Arts*

JAMES A. WINGERT  
Middletown, Pa.  
*B.S. in Business Administration*

GERALD A. WOLFF  
Lancaster, Pa.  
*A.B. in Liberal Arts*

## *In Retrospect*

COLLEGE is not merely preparation for life; college is living life itself. We have been carpenters at Elizabethtown College these four years. Force and hammers were used to build this fact securely—that we have lived here. This period was more than just preparation.

Ambition and fear, forces of our own making, were at times behind the hammer. More often steadfastness, punctuality, and tolerance dominated. The administration, the faculty, the classmates provided stabilizing influences. The pounding was loud and clear; the results in organizations, religious activities, and sports were gratifying.

As an uncertain group of apprentices we began our freshman year, looking with envy upon the organized union of the upperclassmen. Initiation to union rules, the constitution, the alma mater, and organization slogans came early for we were at the mercy of the relentless sophomores during our first two weeks. The desire to be an integral part of the college union became a strong building force in our college lives.

We laid the planks for our foundation in our various chosen curricula and organizations. Rungs to be climbed on the ladder to achievement included College choir, band, athletics, cheerleading, religious activities, SEAP, political science club, and the CONESTOGAN and ETOWNIAN staffs.

Pulling hard against strong competition in the traditional tug-of-war on Homecoming Day, we made our first bid for union membership. Hopes lifted as our girls tasted victory, but our boys fought a losing battle, and we remained still on the outside.

A new year brought new hope and finally success. In January 1956, we achieved the long awaited privilege of organizing our freshman union. Leading us for the first time were Colvin Carter, president; Carl Zeigler, vice president; Fran Hoover, secretary; and Mort Feder, treasurer.

Two members of the distaff side of our union added another plank to our prestige by being elected to represent us on the May Court. This honor was given to Phyllis Moser and Betty Ware.

Hammering tirelessly, we added our second story, at last deserving the coveted title of upperclassmen as we began our sophomore year. The tables were now turned, for we became the journeymen whose task was to prepare for membership the unseasoned timber of the new freshman class. The strength of our forces held them in check as they staged a revolt—the Homecoming tug-of-war.

Adding the finishing touches to the second level of our structure were Phyllis Moser and Frances Hoover, who represented our class on the May Court. At the end of the year several of our number achieved the status of master craftsmen and were awarded certificates in medical secretarial science and secretarial science. Leaving our ranks to serve in these fields were Carole Bossinger, Mary Bovaird, Lois Countryman, Barbara Darlington, Della Mae Detwiler, Lois Hershberger, Marguerite Dum, Marianne Eicholtz, Frances Hoover, Jane McCollough, Sylvia Shaffer, and Barbara Smith.

New union heads were chosen to lead us as we raised the scaffolding of our third year. Robert Miller, Ronald Varner, Mary

Jean Espenshade, and Morton Feder filled the capacities of president, vice president, secretary, and treasurer respectively. It was this year that the college chose its first Homecoming Queen. The Junior journeymen selected Liga Grinbergs, Marjorie Price, and Phyllis Moser as candidates for the title. We appointed building crews for our two big projects—the Junior Variety Show and the Junior-Senior Banquet. Directing the show “Around the World in Eighty Minutes” were Jerry Garland and Arthur Lawton, advised by Mrs. Enterline. The Junior-Senior Banquet held at Hershey Park Golf Club, was made enjoyable by the speaker, Dr. Albert Gray, who surprised us with his vocal talent as he rendered “My Friend, the Witch Doctor, He Told Me What to Say.”

In our union government, Marshall Pomroy, vice president, Ralph Baker, treasurer, and Maynard Grunstra, senator, wielded influence in the planning of the year's activities. We were well represented by our journeymen Carpenters on the Committees on Men's and Women's Affairs.

“May Day in Storyland” was successfully planned by a committee on which Mary Jean Espenshade, Jim Eby, Jean Anne Rogers, Carolyn Schneider, and Catherine Weaver were some of the guiding forces. Phyllis Moser and Jeanette Risser were our class beauties elected to the May Court.

Our senior year found more Carpenters picking up hammers and pounding with force in campus activities. Jerry Garland directed the Homecoming Show entitled “Ivy Time” with Dick Markowitz as assistant. Ned Butt was chosen to reign as the first “ugly man” contest winner. Adding beauty to the evening were the candidates for Homecoming Queen among whom we saw seniors Phyllis Moser, Jeanne Risser, and Marilyn Ward.

Ken Bowers and his ETOWNIAN staff kept us up to date on union news. Our second major publication, the CONESTOGAN, was headed by Mary Jean Espenshade with Yvonne Mowrey and Beverly Styer as assistant editors.

Many of our number lent their strength to the College athletic teams for the last time in 1959. Leading their respective teams on field and court were hockey captain, Jean Anne Rogers; soccer captain, Gene Wise; men's basketball captain, Bill Pensyl; women's basketball captain, Phyllis Moser; and men's tennis captain, Kent Replogle. Spurring the teams on to victory were cheerleading co-captains, Jean Anne Rogers and Jeanette Risser.

Under the leadership of Bob Miller, president; Marty Pomroy, vice president; Mary Jean Espenshade, secretary; and Mort Feder, treasurer, our class selected lights for mid-campus as a memorial to Elizabethtown College. The Senior Dinner Dance was held at Allenberry as a last “fling” by the Carpenters. Phyllis Moser was chosen Queen-of-May with Liga Grinbergs as Maid-of-Honor. Jeanne Risser and Jean Anne Rogers were senior attendants. He helped to plan these activities through the talents of Catherine Weaver, Carolyn Schneider, Jerry Garland, and Jim Eby.

Having driven home the fact that college is life, we shall continue to carry the forces which grew from this living into our various careers. The experiences of initiation, tugs-of-war, square dances, Moose dances, bowling parties, along with examinations and hard work, have left us with a sense of unity and lasting friendship. Proud to graduate in the sixtieth year of Elizabethtown College, the Carpenters have been a part of this history. We have built and in building we have lived.

# *Class of 1960*



J. WILLIAM HOAR  
Gap, Pa.  
PRESIDENT



JAMES S. KNEPPER  
Berlin, Pa.  
VICE-PRESIDENT



G. HENRY OSBORN III  
Pennington, N. J.  
VICE-PRESIDENT

JOYCE E. WENGER  
Fredericksburg, Pa  
SECRETARY



WILLIAM L. ADAMS  
Millersburg, Pa.  
TREASURER





EDITH BAINBRIDGE  
Elizabethtown, Pa.



JOLENE Y. BAIR  
Wrightsville, Pa.

SH-H-H! The curtain is just about to open on the third act of "Our Class." Let's take a quick look at the program again before the act begins.

THE CLASS OF 1960  
presents  
"OUR CLASS"  
an historical drama in four acts  
by  
Class Members

*Cast of Characters*

William Hoar ..... President  
Jim Knepper .....

Vice presidents

Hank Osborn .....  
Joyce Wenger ..... Secretary  
William Adams ..... Treasurer

And starring 120 members of the Junior Class



DANIEL S. BARBER  
Harrisburg, Pa.

NANCY K. BAUGHER  
Lineboro, Maryland



HENRY D. BEAN, JR.  
Haddonfield, N. J.



E. JANE BOOK  
Elizabethtown, Pa.





LLOYD G. BORTZFELD, JR.  
Pequea, Pa.



RUSSEL G. BRUBAKER  
Palmyra, Pa.

## Class of 1960



SAMUEL M. BRUBAKER  
Elizabethtown, Pa.

*Stage:* Your imagination

*Setting:* Elizabethtown College Campus

*Time:* September '58-May '59

Directed by the faculty of Elizabethtown College

*Note:* We wish to express our thanks to the fathers and mothers of the participants for the costumes and to the administration of Elizabethtown College for the furniture and properties.



Campus activities began almost immediately in September with the traditional freshmen initiation. Barry Stevenson was chairman of the Freshmen Initiation Committee. Other members of our class were on the Committee, along with the various class representatives.

DAVID W. BUCKWALTER  
Elizabethtown, Pa.

STANLEY I. BUTLER  
York, Pa.

CHARLES M. BYERS  
Marietta, Pa.





DAVID L. CASSEL  
Lancaster, Pa.



STEVANE CORDAS  
Steelton, Pa.



JOHN DESTEPHANO  
York, Pa.

The Senators were back early in September planning College Activities and welcoming the Freshmen. Our class was represented on the Senate by Barry Stevenson, vice president; Dot Hyde, secretary; Bill Kendig, treasurer; and Bill Hoar, Hank Osborn and Jim Knepper as senators. Our class also had a representative on the Committee on Men's Affairs, Stan Neyer; and on the Committee of Women's Affairs, Gerda Haas.

In no time at all we were sitting in Brinser Lecture Room taking our Junior English Competency Exam. Another experience common to many of the Juniors was a course in the History of the U.S. and Pa.

Faye Groff, Margo Jackson and Joyce Wenger were chosen by the class as candidates for Homecoming Queen which was the final event of the Homecoming Activities.



J. EARL DIBERT  
Elizabethtown, Pa.

KENNETH M. DIEFFENBACH  
Womelsdorf, Pa.



WILLIAM E. ELSTON  
Coatesville, Pa.



## *Class of 1960*



RICHARD P. FALSTICK  
Middletown, Pa.



MARY ELIZABETH FEASER  
Middletown, Pa.



MARION A. GILCHRIST  
Pennsauken, N. J.



LILLIAN JEAN GISH  
Elizabethtown, Pa.



MARSHA E. GRAHAM  
Enola, Pa.

JEAN R. GRIFFITH  
Middletown, Pa.



Lee Miller, chairman of the Class Social Committee, started planning activities right away. The first class-sponsored all-college activity, a hayride, was quite a success. "Hallowe'en In Dogpatch" a dance-party held at Hershey featured a combo made up largely of members from our class, Bill Adams, Steve Cordas, and Ken Dieffenbach, Carl Ziegler, and Faye Groff were the King and Queen for the evening as Daisy Mae and Li'l Abner. In Feb. the class members went bowling as a group.

A big event, not only to our class, but to the campus as a whole was the annual production sponsored by the junior class. Every class member helped in some way to make the show a success.



Bill Elston's original script, "Madbeth," was a parody done on Shakespear's classic "Macbeth." A variety of singing, acting, and dancing was included in the show, which was headed by Barry Stevenson, organization chairman.

The Senate campaigns and elections at the beginning of the second semester got under way at full speed starting with the presidential race. Bill Hoar was chosen by the student body to head the Senate for the coming year, while Fred Zimmerman was chosen as one of the Senators. During these elections Dot Hyde was chosen as CONESTOGAN editor and Jim McCormick as business manager of the CONESTOGAN. Bette Holman was elected editor of the ETOWNIAN.



CHARLES O. GROFF  
Mt. Joy, Pa.



C. EUGENE GROFF  
Ephrata, Pa.



FAYE E. GROFF  
Millersville, Pa.



ALBERTA E. GRUBB  
Middletown, Pa.

GERDA HAAS  
Syracuse, N. Y.



GEORGE P. HAEFNER, JR.  
Lancaster, Pa.





ASHER S. HALBLEIB  
Mt. Joy, Pa.



CARROLL L. HALL  
Hopewell, Pa.

## *Class of 1960*



JOHN S. HENCH  
Loysville, Pa.

May Day was one of the last major activities of our Junior year. Our class was represented in the court by two charming girls, Sidney Pegram and Ruth Ziegler.

While all these college and class events were going on, our individual class members were busy participating in many extra-curricular activities. Musical talent was evident among the juniors, as shown by their membership in the college choir, chorus, quartets, orchestra, and pep band.

LUCILLE P. HENDRICKS  
Harleysville, Pa.



JOYCE M. HEPPELEIN  
Pennsauken, N. J.



GARY W. HIBNER  
York, Pa.





PAUL R. HOLLINGER  
Elizabethtown, Pa.



BETTE J. HOLMAN  
Arcola, Pa.



M. LOUISE HORNING  
Rheems, Pa.

Choir members included Lucy Hendricks, who served as secretary of the organization, Nancy Baugher, Marsha Graham, Carroll Hall, Shirley Raffensperger, Sylvia Santee, Asher Halbleib, Ken Dieffenbach, and Don Willoughby. Singers in the chorus were Ruth Ziegler, Audrey Singer, Dottie Zlobik, Pat Williams, Nancy Baugher, Marsha Graham, Don Willoughby, Barbara Yohe, John Mease, Sylvia Santee, Lucy Hendricks, and Asher Halbleib.



VIRGINIA HORTON  
Pennsauken, N. J.

ELLIS L. HOSTETTER  
Lebanon, Pa.



PATRICIA A. HUNBERGER  
Palmyra, Pa.



## Class of 1960



DOROTHY J. HYDE  
Custer City, Pa.



SANDRA F. JOHNSON  
Airville, Pa.



HAROLD G. JOHNSON  
Elizabethtown, Pa.



WILLIAM L. KENDIG  
Spring Grove, Pa.



GUY L. KESSLER  
Tower City, Pa.

WALTER T. KLINEDINST  
York, Pa.



Special talent was shown by several class members who were chosen to sing in the women's and men's quartets. Lucy Hendricks, Nancy Baugher, and Shirley Raffensperger were included in the women's quartet; while Asher Halbleib contributed his talents to the College male quartet. Orchestra members were Marsha Graham, Bill Adams, Nancy Baugher, Ken Dieffenbach, and Mary Feaser, while Marsha Graham, Bette Holman, and Joyce Wenger continued in the girls' Pep Band that was formed last year.

Fred Zimmerman added to the leadership of the ECCA as vice president and Dot Hyde served on the program planning committee of that group.

Eta Gamma Kappa members included Dave Cassel (president), Fred Zimmerman (vice president), and Guy Kessler (secretary-treasurer). Other members were Don Willoughby, and John Hench. Shirley Rafensperger, Kathy Weller, Nancy Baugher, Lucy Hendricks and Carroll Hall were active in CBYF.

Our class has always been recognized as one possessing an unusual abundance of enthusiasm and school spirit. This year was no exception. Campus sports, for example, were given firm support by quite a few of our athletically inclined classmates. In soccer our class added power to the team with Lance Strayer, Bill Hoar, Fred Zimmerman, Bill Kendig, Hank Osborn and Jim Knepper.



DORIS E. KRIEG  
Jamaica, N. Y.



RICHARD A. LANTZY  
Towaco, N. J.



LORRAINE K. LEPP0  
Hanover, Pa.

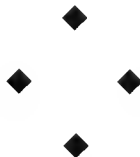


JOHN L. MAGEE  
Wilmington, Delaware

JOHN E. MANN  
Wrightsville, Pa.



J. RONALD MAZURIK  
Hummelstown, Pa.





JAMES E. McCORMICK  
Harrisburg, Pa.



JOHN H. MEASE  
Hershey, Pa.

## *Class of 1960*



PAUL D. METZGER  
Quarryville, Pa.

The girls who showed their talents in field hockey were Pat Williams, Carol Beard, Louise Horning, Martha Reese, Sidney Pegram, Ginger Horton, and Doris Krieg. Pat Williams, Carroll Hall and Barbara Yohe played on the girls' basketball team. Marty Reese was the manager. Bill Kendig had another good year on the wrestling team.

With the arrival of spring weather, we saw Lloyd Bortzfield on the baseball diamond, and Charles Groff and Shirley Rafensperger on the tennis courts. Hank Osborn kept the Blue Jay hopping again this year while Carroll Hall, Carol Beard, and Marty Reese kept the fans cheering at our basketball games.

GARY B. MILLER  
York, Pa.



JACK H. MILLER  
Halifax, Pa.



STANLEY R. NEYER  
Tower City, Pa.





SIDNEY C. PEGRAM  
Lancaster, Pa.



KARL G. PETRY  
York, Pa.



SHIRLEY A. RAFFENSPERGER  
Elizabethtown, Pa.

Our class was well represented in the two athletic organizations on campus, as well as in the intramurals. Varsity E members included Jack Miller, Charles Groff, Lance Strayer, Hank Osborn, Fred Zimmerman, Bill Kendig, Carroll Hall, and Bill Hoar. Carroll Hall served as president of WAA and Gerda Haas as secretary. Other members were Donna Wolf, Shirley Raffensperger, Kathy Weller, Ruth Ziegler, Marsha Graham, Dorothy Zlobik, Pat Williams, Barbara Yohe and Marty Reese.



JAMES R. RAVER  
Columbia, Pa.

JAMES W. REAGAN  
Connellsville, Pa.



MARTHA H. REESE  
Wilmington, Delaware



## Class of 1960



LARRY E. RENTSCHLER  
Robesonia, Pa.



DONALD T. RUNK  
Coatesville, Pa.



SYLVIA M. SANTEE  
Northampton, Pa.



PAUL C. SCHULTZ  
Reading, Pa.



DAVID H. SIMONDS  
Wilmington, Delaware

LANCE L. STRAYER  
Mount Wolf, Pa.



Journalists in the class worked tirelessly on the College publications, the ETOWNIAN and CONESTOGAN. Bette Holman showed her talent not only by being assistant editor of the ETOWNIAN but also by being a regular reporter on the Elizabeth town *Chronicle*. Bill Hoar also wrote for the ETOWNIAN. Those on the CONESTOGAN staff included Dot Hyde, Ruth Ziegler, Joyce Wenger, Marsha Graham, Ginger Horton, and Ellen Gaines.



In SEAP, Joyce Wenger and Barbara Yohe held the offices of vice president and secretary respectively. Members from our class included Kathy Weller, Nancy Baugher, Marsha Graham, Lucy Hendricks, Asher Halbleib, Alberta Grub, Marty Reese, Hank Osborn, Mary Feaser, Donna Wolf, Shirley Raffensperger, Dick Lantzy, Gerda Haas, Dottie Zlobik, Sylvia Santee, Joyce Hepplein, and Gary Zimmerman.

Politically speaking Lee Miller and Dot Hyde were in the spotlight as president and ICG chairman of the Political Science Club. Bill Kendig and Joyce Wenger were members of the club.



MELANIE K. SWINGLER  
Columbia, Pa.



MANUEL B. TEJEDA  
Newburgh, N. Y.



BRUCE W. TINGLOF  
Canton, Mass.

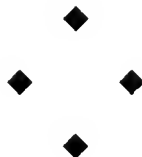


ROBERT TRITT  
Lemoyne, Pa.

BARBARA ULMER  
Middletown, Pa.



GEORGE W. ULRICH  
Annville, Pa.





JUDITH K. WALLIN  
Bristol, Pa.



DOROTHY E. WEAVER  
Cleona, Pa.



KATHLEEN D. WELLER  
Windber, Pa.



WILLIAM P. WENTZ  
Harrisburg, Pa.

Dramatic talent was shown by many members of the class. Marsha Graham, Asher Halbleib, Pat Williams, Bette Holman, Dot Hyde, Joyce Hepplein, Joyce Wenger and Ellen Gaines participated in the drama group on campus—Sock and Buskin. Shelley Bannister and Richard Falstick were in the cast of "Aria da Capo," the Homecoming play. In the fall production, "The Potting Shed," Shirley Raffensperger, Joyce Wenger and Asher Halbleib took leading roles.

JAMES T. WHITE  
Lititz, Pa.

PATRICIA WILLIAMS  
Watsonstown, Pa.



# Class of 1960



JAMES M. WILLIARD, JR.  
Highspire, Pa.



YVONNE WILLIARD  
Highspire, Pa.

This year the Christmas drama was given as a pageant, "The Feast of the Star," with the combined efforts of the College choir and drama department. Members of the pageant were Fred Zimmerman, Clyde Roach, Guy Kessler, John Hench, and Bob Yohn, and Joyce Hepplein helped as assistant director. The ECCA again selected a play as part of its exchange program, this year directed by Dottie Zlobik and Marialice Myers. Jim Raver, Ruth Ziegler and Pat Williams were part of the cast. A modern religious drama, "Christ in the Concrete City," was given in the Elizabethtown Church of the Brethren. Fred Zimmerman was a part of that group.

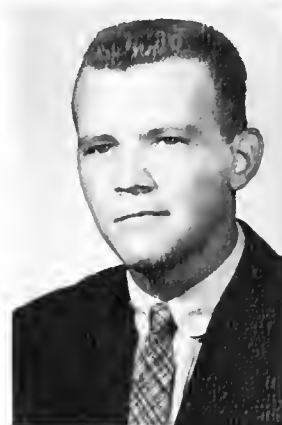


DONALD E. WILLOUGHBY  
Elizabethtown, Pa.

JAMES E. WITT  
Elizabethtown, Pa.

DONNA R. WOLF  
Gettysburg, Pa.

JAMES W. YOCUM  
Middletown, Pa.



## Class of 1960



BARBARA A. YOHE  
York, Pa.



ROBERT L. YOHN  
Port Royal, Pa.



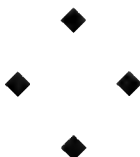
RUTH E. ZIEGLER  
Bethel, Pa.

Our class was represented in the science students' organization, Phi Beta Chi. These representatives were Charles Byers, Pat Williams, Hank Osborn, Joyce Wenger, Ken Dieffenbach, and Judy Wallin as secretary of the group.

James Reagan served as President of the French Club. Acting as part of the planning group, Donna Wolf and Bill Kendig were the Senate Social Committee.

Some of the class members were kept busy as laboratory assistants, resident assistants, library assistants and College Store employees. Those serving as laboratory assistants included Charles Byers, Ruth Ziegler, Gary Zimmerman, Ken Dieffenbach, Pat Williams, Hank Osborn, Judy Wallin, Bill Adams, and Steve Cordas. Asher Halbleib worked with the audio-visual department, Sidney Pegram in the music department, and Stan Neyer in the accounting department.

Residence assistants were Gerda Haas, Ruth Ziegler, Jim Knepper, Bill Kendig, Lucy Hendricks, Sylvia Santee, Lorraine Leppo, Marsha Graham, Joyce Hepplein, Barbara Yohe, Marion Gilchrist, and Nancy Baugher. Joyce Wenger was a library assistant and Dot Hyde worked in the College store.





FREDERICK J. ZIMMERMAN  
Fredericksburg, Pa.



GARY R. ZIMMERMAN  
Harrisburg, Pa.



DOROTHY E. ZLOBIK  
Bridgeton, N. J.

## *Juniors not pictured*

AUNGST, HARRIS F.  
Lansdale, Pa.

BANNISTER, SHELLEY  
Harrisburg, Pa.

BORTNER, HARVEY E.  
York, Pa.

BLOSE, MAURICE R.  
Lewistown, Pa.

BOWMAN, WILLIAM A.  
Annville, Pa.

DAVIS, SAMUEL G.  
Landisville, Pa.

DISCAVAGE, MARGARET J.  
Lebanon, Pa.

FASICK, KENNETH M.  
Harrisburg, Pa.

GAINES, GLEN ALLEN  
Cleona, Pa.

GINDER, HAROLD  
Elizabethtown, Pa.

HACKMAN, WILLARD H.  
Manheim, Pa.

HETRICH, A. RONALD  
Manheim, Pa.

JACKSON, MARGO A.  
Pleasantville, Pa.

LANDIS, HARRY E., JR.  
York, Pa.

MARVEL, ROBERT F.  
New Castle, Del.

MILLER, LEE W.  
Woodstown, N. J.

MILLER, RONALD H.  
Harrisburg, Pa.

MYERS, DENNIS L.  
York, Pa.

ROACH, CLYDE W.  
Harrisburg, Pa.

ROBINSON, GILBERT  
Harrisburg, Pa.

SCHWARTZ, DONALD  
Hatfield, Pa.

SMITH, MILTON E.  
Norfolk, Va.

STEVENSON, BARRY E.  
Waynesboro, Pa.

STONER, KAY  
Elizabethtown, Pa.

TROPS, TAMARA  
Lancaster, Pa.

VULICH, STEPHEN  
Steelton, Pa.

WAGNER, KENNETH L.  
Tamaqua, Pa.

WHISLER, RICHARD  
Rohrerstown, Pa.

WILSON, VICTOR  
Harrisburg, Pa.

WOLF, PAUL L.  
Hopeland, Pa.

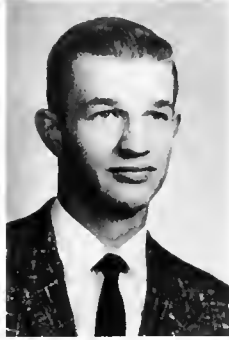
ZELLNER, DONALD G.  
Bainbridge, Pa.

# Class of 1961



E. LOY GARBER  
Roaring Spring, Pa.

PRESIDENT



HELMUT W. BAER  
Hudson, N. Y.

VICE-PRESIDENT



N. ELIZABETH FORRER  
Stuarts Draft, Virginia

SECRETARY



GLENN J. BRUCKHART  
Palmyra, Pa.

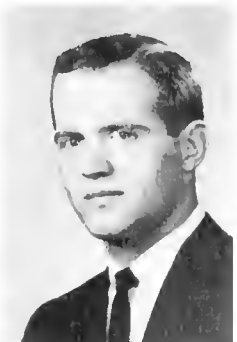
TREASURER

SOPHOMORE—a word feared by freshmen, looked down upon by juniors, and simply ignored by seniors has a deep and reverent meaning to us, the class of 1961. It represents our second year of college packed full of good times along with hard work. For most of us, it was the hardest, the year we learned what it is to be challenged. But now with the textbooks, bluebooks, “unknowns,” and term papers out of our minds,

pleasant memories of class events come flooding back.

We take most pride in the Blazer Tradition which our class had the privilege of starting. Our class is the first to have a college blazer with our own originally designed emblem. Belva Cassel designed the emblem for the handsome gray blazers that we wear with pride.

JAMES W. AKERMAN  
Landenberg, Pa.



JANET L. BAIR  
Wrightsville, Pa.



WILLIAM BAIR  
Kinzers, Pa.





MARIAN J. BARRNER  
Pennsauken, N. J.



NORMAN R. BITTERMAN  
Lancaster, Pa.



ARLENE M. BOMBERGER  
Lebanon, Pa.

Under the competent leadership of our officers—Eugene Loy Garber, president; Helmut Baer, vice-president; Elizabeth Forrer, secretary; and Glenn Bruckhart, treasurer—many other class functions turned out to be great successes.

A welcoming committee, popularly termed the F.I.C., composed of sophomores under the leadership of Barry Stevenson, a junior, was on hand to greet the freshmen. Through these 20 people our feelings of vengeance resulting from memories of our own initiation dwindled . . . but then can a hard-boiled egg ever compare with a foul-smelling onion?



GERALD L. BONGART  
Columbia, Pa.

DAVID S. BROWN  
Harrisburg, Pa.



GLORIA A. BRUBAKER  
Ephrata, Pa.



JUDITH C. BRYANT  
Franklin, N. J.



ALICE L. BURROWS  
Stroudsburg, Pa.



# Class of 1961



CAROL A. BUSH  
Manheim, Pa.



EDWIN M. BUSH, JR.  
Manheim, Pa.

RUTH A. CARROLL  
Peach Bottom, Pa.



J. THOMAS COLLINS  
Lancaster, Pa.



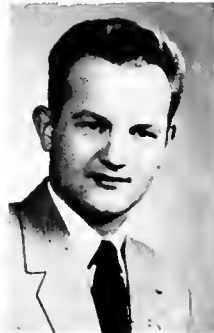
BELVA L. CASSEL  
Fairview Village, Pa.



LEE G. CONNER  
Lewistown, Pa.



QUENTIN R. CHAFFEE  
Elizabethtown, Pa.



P. DAVID CORRELL  
Elizabeth, N. J.



WARNER H. CHEEKS  
Elizabethtown, Pa.



DOUGLAS E. CROMER  
Hanover, Pa.



Homecoming Day was not as victorious as we would have liked it to be, but nevertheless we had fun. The tug-of-war took place once again in the traditional location over Lake Placida. Although our sophomore boys had the pleasure of giving the freshmen two good duckings, we lost due to an unfortunate default on our side in the third pull.

Our girls presented a colorful show in their roarin' twenties costumes and with their grand entrance in a fire truck and an old Model-T Ford. What a time that was!





BARBARA E. CURTIS  
Hackettstown, N. J.



WILLIAM F. DENGLER  
Lititz, Pa.



CHARLES G. DENLINGER  
Salunga, Pa.



RUTH E. DRUKENBROD  
Lancaster, Pa.



JUDITH EBY  
Landisville, Pa.



BRUCE D. EPPLE  
Reedsville, Pa.



NANCY P. FEO  
Newfield, N. J.



JANICE L. FERSTER  
Hanover, Pa.

M. JOYCE FOCHT  
Middletown, Pa.

That evening Elizabeth Forrer, Ruth Riser, and Mara Znotens represented us in the Homecoming Court. With Mara, Ruthie, and Libby taking care of the beauty in our class, Neal Krauss went out for the "beast" and campaigned in the Ugly Man Contest to raise money for World University Service. Who can forget his vicious hook?

Christmas vacation of 1958 is a never-to-be-forgotten experience for Romaine Furry, Kenneth Kreider, and Janet Wagner who attended the Church of the Brethren Conference in LaVerne, California.



CLAUDE L. FOREMAN  
Reading, Pa.





JANET L. FRANKHOUSER  
New Holland, Pa.



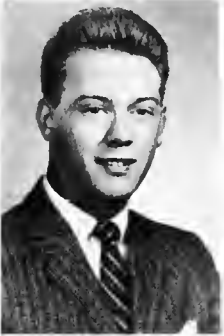
ROMAYNE E. FURRY  
Williamsburg, Pa.



GORDON H. GANTZ, JR.  
Lancaster, Pa.



DONALD N. GARMAN  
Manheim, Pa.



TERRY G. GARMAN  
Elizabethtown, Pa.

Remember the hayride in November?  
How cold it was, and then to get a flat tire!  
However, plenty of blankets, high spirits,  
and "good companionship" kept us warm.

In December we sophomores added another "first" to our reputation—the "Peace on Campus, Goodwill to Freshmen," Christmas party was a great success. Any remaining hard feelings were resolved and freshmen and sophomores made their peace in an evening of good fellowship.

JACK B. GEESEY  
York, Pa.



ROBERT L. GEIGER  
Harrisburg, Pa.



ROBERT E. GERBER  
York, Pa.



JOHN R. GLAZIER  
Elizabethtown, Pa.





E. QUINTON GORDON  
Norfolk, Virginia



MARY ELLEN GROFF  
Lancaster, Pa.



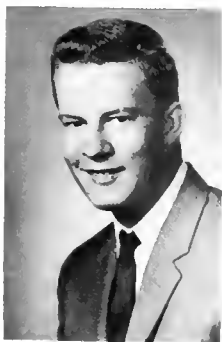
LOUANN J. GRONINGER  
Port Royal, Pa.

## *Class of 1961*



SUNG-HO HAHM  
Seoul, Korea

ERNEST L. HARRIS  
McConnellsburg, Pa.



Then came the now familiar tortures and tensions of semester exam week followed by the most glorious vacation of all—semester break. A swimming party at MSTC was the first event of the new semester. And in February we attended the Ice Capades as a class function.

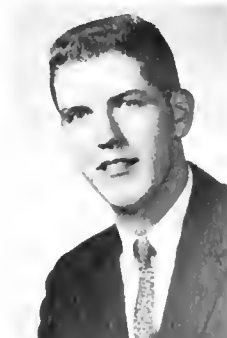
JANET L. HAY  
Gettysburg, Pa.



MARTIN T. HEFFERAN  
Glenolden, Pa.



ROBERT L. HEFFLEY  
Stevens, Pa.



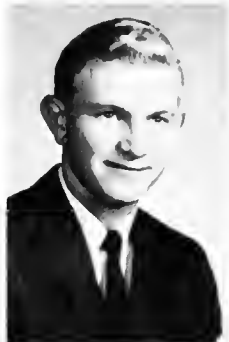
CAROL R. HEILMAN  
York, Pa.



# Class of 1961



JANE R. HERGERT  
Eddystone, Pa.



CARROLL HERSHEY  
Gordonville, Pa.

LAWRENCE R. HETZEL  
Harrisburg, Pa.



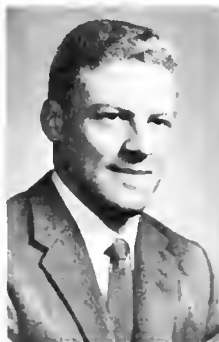
JAMES R. HOSTETLER  
Palmyra, Pa.



DAVID H. HIGINBOTHAM  
New Oxford, Pa.



BURNELL A. HOSTETTER  
Lancaster, Pa.



JUDITH M. HORNBERGER  
Mt. Carmel, Pa.



DORIS V. HOSTETTER  
Fredericksburg, Pa.



DONALD H. HOSLER  
Manheim, Pa.



SHIRLEY R. HOUCK  
Westminster, Md.



Sophomores were active in many other areas of campus life. Quite a few of our number comprised part of the membership of SCA, WAA, SEAP, CBYF, and LSA and several held offices in these organizations. Barbara Schlickemaier was vice-president of WAA and Sandra Swann tackled the job of being chairman of intra-murals. Both Belva Cassel and Gloria Paules were secretary-treasurer in CBYF and LSA, respectively.



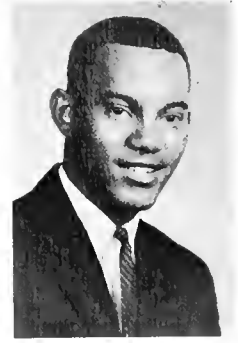
DONALD B. HUBER  
East Petersburg, Pa.



HAROLD E. HUBER  
Manheim, Pa.



PATRICIA B. JACKSON  
Springfield, Pa.



RALPH D. JOHNSON  
Dowell, Maryland



MARY F. JOHNSTONE  
Lancaster, Pa.



BARBARA E. JONES  
Oldwick, N. J.



KAY L. JONES  
Elizabethtown, Pa.



PATRICIA K. KENNEDY  
State College, Pa.

LLOYD D. KERCHNER  
Hanover, Pa.



MARJORIE A. KERNEN  
Rushland, Pa.

A streak of printer's ink runs through the veins of some of our class members, and these found their place with the campus publications. The talents of Marian Barrner, Belva Cassel, Donald Garman, Robert Gerber, Mary Frances Johnstone, Ruth Koch, Marialice Myers, and Elfriede Neufeld were expressed in the CONESTOGAN. The ETOWNIAN attracted Janice Ferster, while Carol Heilman, Joan Lank, and Joyce Miller worked on both staffs.





RUTH G. KEYSER  
Abington, Pa.



RUTH KATHRYN KOCH  
Fullerton, Pa.



HENRIETTA A. KOHR  
York, Pa.



ROBERT S. KRAJSIK  
Mechanicsburg, Pa.



ELAINE M. KREIDER  
Lancaster, Pa.

Music is a big part of everyone's life. Many sophomores were members of the All-College Chorus. In the choir were Douglas Cromer, Janice Ferster, Robert Heffley, Ralph Johnson, Mary Frances Johnstone, Henrietta Kohr, Kenneth Kreider, Jeanne Leber, Richard Merritt, Sandra Reifsteck, Lynne Roudabush, Lonny Thomas, and Kathleen Wisegarver. Lynne Roudabush was also a member of the women's quartet.

J. KENNETH KREIDER  
Quarryville, Pa.



CAROL L. KRUGER  
New Cumberland, Pa.



JOAN LANK  
Gettysburg, Pa.



HELEN F. LANTZ  
McVeytown, Pa.





DORIS R. LARGE  
Waynesboro, Pa.



KENNETH R. LEASE  
Middletown, Pa.



JOAN LEATHERMAN  
Line Lexington, Pa.

## *Class of 1961*



JEANNE E. LEBER  
York, Pa.

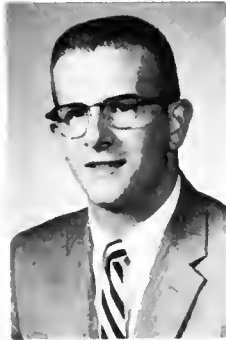
EMILY C. LEEDS  
Burlington, N. J.



CAROLYN D. LESHER  
Lebanon, Pa.



JAMES E. LINEWEAVER  
Fredericksburg, Pa.



WILLIAM R. LONGENECKER  
Palmyra, Pa.



JESSE L. LOWE  
Muncy, Pa.



When the orchestra played for various programs, we always looked for Alice Burrows, Belva Cassel, Janice Ferster, John Minnich, and Joseph Wagenseller.

Shakespeare once said "Play well your part, there all the honor lies" and honor must be given to Carol Bush and Carol Heilman for their parts in "The Potting Shed," the fall play.

# Class of 1961



SANDRA M. LUTZ  
Sinking Spring, Pa.



JAMES E. MACBRIDE  
York, Pa.

During Religious Emphasis Week the play "Everyman" was presented with John Brightbill in the lead role. Also participating in dramatics were Joan Lank and Sandra Lutz, members of Sock and Buskin.

The political scene was of interest to Helmut Baer, Edwin Bush, Belva Cassel, Eugene Loy Garber, Rosalind Griffin, Sung-Ho Hahn, Kenneth Lease, Richard Spangler, and Janet Wagner, who belonged to the Political Science Club.

SANDRA C. MACLAUGHLIN  
Monroeville, N. J.

HENRY A. MATT  
Lancaster, Pa.

RICHARD E. MERRITT  
York, Pa.

JOYCE L. MILLER  
Lancaster, Pa.



JOHN P. MINNICH  
York, Pa.



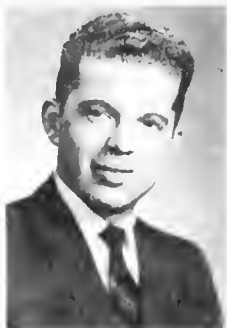
ESTHER D. MOSTOLLER  
Somerset, Pa.



MARIALICE F. MYERS  
North Canton, Ohio



KENNETH E. NEFF  
Pequea, Pa.







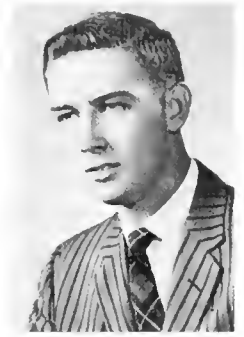
ELFRIEDE M. NEUFELD  
Sinking Spring, Pa.



VIRGINIA L. PATTON  
Honey Brook, Pa.



GLORIA N. PAULES  
Wrightsville, Pa.



ROBERT P. PETERS  
York, Pa.



HELEN F. PFEFFER  
Gettysburg, Pa.



JERRY D. REBER  
Lebanon, Pa.



G. MYRA REIFSNIDER  
Royersford, Pa.



REGINA RICE  
Paradise, Pa.

ROSS G. RICKETTS  
Allentown, Pa.



RUTH E. RISSER  
Chalfont, Pa.



Tuesday night meetings of Phi Beta Chi in the Brinser Lecture Room are recalled pleasantly by Helmut Baer, Lee Conner, Barbara Curtis, Judith Hornberger, Patricia Jackson, Ralph Johnson, Neal Krauss, Jesse Lowe, James MacBride, Joyce Miller, Esther Mosteller, Jerry Reber, Herbert Spanuth, and Ruth Tice.

Sportswise the class of '61 was well represented on many teams. Carol Bush, Judith Eby, Kay Jones, and Sandra Swann manned the hockey sticks on the girls field hockey team.

What would our cross country meets be like without Helmut Baer, Glenn (Stretch) Bruckhart, or Donald Hosler?

Carroll Hershey brought honor to both our school and our class when he made first team with the Middle Atlantic soccer selections.



LYNNE ANN ROUDABUSH  
Johnstown, Pa.



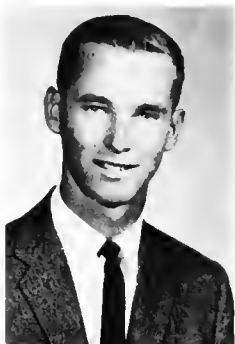
LYNN L. SAYLOR  
Red Lion, Pa.



BARBARA SCHLICKENMAIER  
Baltimore, Md.



TERRENCE R. SCHULTZ  
Fairview Village, Pa.

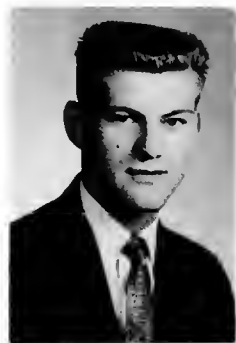


DONALD R. SCHWARTZ  
Hatfield, Pa.

Also playing on the soccer team were Warner Cheeks, John Glazier, Jerry Reber, and Herbert Spannuth.

How we looked forward to winter and basketball! Glenn Bruckhart, Bob Geiger, Eugene Gordon, Ed Harnly, Marty Hefferan and manager Dale Zeiders never failed to show us a good game. And don't forget the gals who cheered them on to victory—Carol Beard, Judith Eby, Marjorie Kernan, and Ruth Risser.

BRYAN SEESE  
Lederach, Pa.



CLARK N. SHIFFER  
Millerstown, Pa.



ANN D. SNYDER  
York, Pa.



RICHARD J. SPANGLER  
Campbelltown, Pa.





HERBERT A. SPANNUTH  
Jonestown, Pa.



VIRGINIA A. STAPLES  
Ocean Gate, N. J.



CORRINE E. STEINBAECHE  
Bausman, Pa.

## *Class of 1961*



BEATRICE E. SUPULSKI  
Lancaster, Pa.

SANDRA A. SWANGER  
Lebanon, Pa.



The girls' basketball teams were well made up of sophomores also. Judith Eby, Barbara Jones, Kay Jones, Myra Reifsneider, Barbara Schlickemaier, Sandra Swann, and Pat Usinger were all on the team.

The reflection of all these events and activities brought us up to the one big day of the year—May Day. This year Carol Bush and Sandra Lutz represented us in the May Court.

SANDRA H. SWANN  
Washington, D. C.



BARBARA R. SWAYNE  
Kennett Square, Pa.



PATRICIA A. THOMPSON  
Butler, N. J.



JAMES H. THORNLEY  
Easton, Pa.



# Class of 1961



PATRICIA A. USINGER  
Bridgeton, N. J.



JOSEPH P. WAGENSELLER  
Harrisburg, Pa.

With the passing of this day, passes our sophomore year. Next September several of our number will not return. They will be filling jobs as secretaries, medical technologists and medical secretaries. But those of us who will return look forward to another year or two of fun and hard work.

While we lay lazily in the sands this summer, we can recall dorm parties, meetings at the "Bucket," Moose dances, tug-of-wars, and all the other little things that have come to mean to us—Elizabethtown College, our Alma Mater.

JANET E. WAGNER  
Myerstown, Pa.

PATRICIA A. WALBORN  
Palmyra, Pa.

JOHN H. WARNER  
Lititz, Pa.

M. PATRICIA WENTZ  
Atglen, Pa.



LINDA L. WERT  
Mifflintown, Pa.

KATHLEEN Y. WISEGARVER  
Enola, Pa.

CARL R. WITTLINGER, III  
New Providence, Pa.

JANET WOLGEMUTH  
Mt. Joy, Pa.





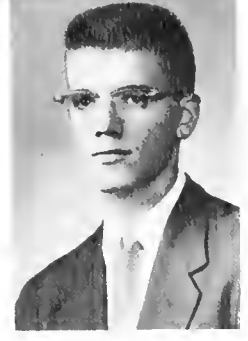
ELSIE H. WOODWARD  
Annapolis, Md.



MONA J. WYLES  
Saxton, Pa.



GALEN D. YOUNG  
Chester, Pa.



DALE L. ZEIDERS  
Dillsburg, Pa.



MARA ZNOTENS  
Quakertown, Pa.

## *Sophomores not pictured*

GOTKIN, HOWARD  
Philadelphia, Pa.

GREENLEY, FAYE  
Ephrata, Pa.

GRIFFIN, ROSALIND E.  
Baltimore, Md.

HARNLY, EDGAR P.  
Lititz, Pa.

HEBERLIG, SUSAN K.  
Ephrata, Pa.

HODGINS, DANIEL S.  
Upland, Pa.

JACOBUS, DORIS A.  
Butler, N. J.

KOCH, RUTH  
Chester, Pa.

KRAUSS, F. NEAL, JR.  
York, Pa.

LIACOURAS, PETE S.  
Penns Grove, Pa.

MCGOVERN, WALTER H., JR.  
Lancaster, Pa.

MILLAR, GLENN W.  
Gettysburg, Pa.

MOEN, ANNE D.  
Lancaster, Pa.

NYCE, LLOYD P.  
Vernfield, Pa.

RIEFSTECK, SANDRA L.  
Altoona, Pa.

REYNOLDS, JOHN  
Quarryville, Pa.

SABBI, JOHN F.  
Downingtwn, Pa.

SCHNEIDER, WILLIAM G.  
Doylestown, Pa.

SMITH, EUGENE I.  
Harrisburg, Pa.

STYER, MALCOLM  
Uwchland, Pa.

THOMAS, LONNY L.  
York, Pa.

TICE, RUTH A.  
Line Lexington, Pa.

WISE, ROBERT C.  
Elizabethtown, Pa.

WOODRING, PAUL S.  
Catasauqua, Pa.

WYON, ALEXANDER  
Philadelphia, Pa.

ADAMS, WILLIAM, JR.  
Carney's Point, N. J.

BARLEY, DONALD R.  
Landisville, Pa.

BEARD, CAROL J.  
Lancaster, Pa.

BRIGHTBILL, JOHN A.  
Harrisburg, Pa.

CHAPMAN, EDWIN R.  
Lynn, Mass.

COTTMAN, GLEN H.  
Wilmington, Del.

ELLIOTT, LINDA M.  
Wenonah, N. J.

ESTÖCK, GERALD M.  
Mount Joy, Pa.

GERBER, ROBERT E.  
York, Pa.

# Class of 1962



Freshman class officers take time from their business meeting to pose for a picture. They are, from left, Dale Kilhefner, president, Linda Simkins, secretary-treasurer, and Glenn Bucher, vice-president.

“WELCOME to Elizabethtown College—Register Under the Elms.” When we saw this sign, we knew that our dreams of college life had become a reality. After meeting roommates and getting partially settled in our rooms, we registered under the elms and made acquaintances with fellow freshmen.

The next several days we were introduced to the campus and campus life. Teas and entertainment sponsored by many college organizations provided an opportunity to meet upperclassmen as well as other freshmen. Even rain during the picnic at

Long’s Park and the freshman hike failed to dampen our enthusiasm! Folk games added that final touch to our last informal get-together.

Free minutes of these first college days were spent in room-decorating, sight-seeing tours, and gab-sessions. Since this was the first that many of us had been away from our families, we experienced the feelings of homesickness, but with the coming of scheduled events, our thoughts were occupied.

Settling down to the normal procedures of college life, we became accustomed to professors, long lectures, term papers, cafeteria lunches, and those essay examinations!



Frosh Tam Trimmer, Penny Boyer, John Stroh, Ray Bowen and Jean Zettlemoyer discuss the regulations for the oncoming initiation week.

Just as we had adapted ourselves to the college routine, we became the victims of the Sophomore F.I.C. Committee. We were subjected to a new title, "Egghead, Puny Frosh." Humbly we freshmen lined up before the New Residence Hall at 6:30 a.m. to receive our first instructions from the "supereminent committee members." Complaining as we marched across campus attired in dinks and signs, our first task was a "campus-cleanup-campaign."

There was a mad scramble to obtain the eggs which were to be hardboiled and autographed by ten committee members. This proved to be a tedious and delicate task since no cracked eggs were accepted. In addition, we were required to button our dinks to all upperclassmen and to present toothpicks and matches on request. We looked upon our daily meetings with F.I.C. in terror! Hula hoops and dissertations provided amusement for the onlooking freshmen and upperclassmen.



Ready to order a tempting snack, Judy Nesbit, Sally Martin, Mary Gladfelter, Evelyn Strauss, and Dixie Myers smile as they wait for service.

# Class of 1962



Barbara Garvine, Linda Kranch, Janet Dahms, Jean Apgar, and Beverly DeWitt choose a popular conversation spot, the steps near Rider Memorial Hall.

At last that long awaited day arrived! As the freshmen lined up for the tug-of-war, we were hopeful that this would be the last to wear those hated dinks. Our cheering girls, costumed as pirates, encouraged the nervous freshman team. Pulling with all our might, we gave the sophomores an unexpected dip in Lake Placida. Freshmen were victorious after a forfeit from the sophomore team. Our triumph in the cheering contest also added to the honor of our class.



Susan Schrock, Kay Fluck, Jane Barsumian, Annie Keiter, and Carol Rees met in the lounge to make plans for the freshman-sophomore cheering competition, Homecoming Day.

Snapped in front of the gym before continuing their campus tour were: (standing) William Howells, Fred Buckendorff, Elizabeth Peacock, Roy Springfield, (kneeling) Francis Hurley, Dave Yost, and Ray Berkebile.







Initiation week was climaxed with a bonfire on the shores of Lake Placida. After an Indian dance around the fire and a profession of undying love for F.I.C. members, we were permitted to burn our eggs and signs. Now only dinks distinguished us from upperclassmen!

We eagerly looked forward to our first big weekend—Homecoming. The dance, "Fall Fantasy," held at the Hershey Park Golf Club, introduced the activities of this annual event. A fantasy it was as we danced among the colorful fall decorations to the music provided by "The Lee Mac Five."



Nature lovers (seated) Yvonne Schreiner, Philip Replogle, Linda Hollinger, (standing) Eugene Roth, Connie Smith, and Sue Mackey turn their attention away from Lake Placida toward the camera for a moment.



Pleasant October days provide opportunity for a line up of carefree Freshmen like Bernard Albaugh, Jere Sweigart, Dave Sigler, Richard Reinhard, and Paul Leicht.

Dale Kilhefner seeks first-hand information from Virginia Wills as Earl Stimeling, Dennis Dougherty, and Robert Rosenberger await the news.



Happy that classes are over for the day, Tony Martin, Mary Ann Algier, Pat Shetter, Beulah Taylor, and Barbara Hensel get their coats before departing into the brisk December air.

Homecoming Day reached its climax with the crowning of a freshman candidate, Carol Rees, as queen. Our two other attendants in the homecoming court were Janet Espenshade and Judy Neilson. Homecoming was indeed a victorious day for the freshman class!

By this time we were firmly entrenched in campus organizations and activities. Many of us joined the all-college chorus. Jane Barsumian, Glenn Bucher, Ruth Ann Geiselman, Wilbur Gible, Mary Gladfelter, Dale Kilhefner, Fred Landis, Judy Nesbit, and Evelyn Strauss were selected for the College choir.



After visiting Pres. Baugher, Daris Bushong, Kitty Abey, Audrey Singer, Linda Itzoe, and Harold Shenk pose on the steps of his home for the photographer.



Observing the qualities of each player, Ronald Grew, Glenn Bucher, Jennie Witt, Arlene Stouffer, James Hackman, and Georgianna Egresites predict the winner of the ping pong game.

# Class of 1962



Sports car enthusiasts Robert Krebs, Diana Neubauer, William Everhart, Larry Krick, and Daniel Nafziger would like to take a ride, but classes come first.



Martha Eppley, Karen Kaski, Tim Dulany, Larry Doster, and Lynne Hablett are caught outside the dining hall chuckling over the latest campus jokes.

Bill McCracken, Jack Yader, Wai-Mun Cheung, and Tai-Keung Fu, gather on a bench near Alpha Hall to talk about the soccer victory.



# Class of 1962



One way traffic creates a problem at the mail box for Sylvia Hixon, Robert Leamer, James Todd, and Peggy MacKenzie.

With their boundless energy and pep, freshmen cheerleaders Judy MacKenzie, Judy Nesbit, Bonnie Scott, and Linda Wagner helped to cheer our teams on to victory.

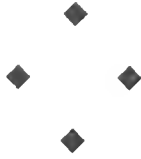
Many freshmen participated in campus religious activities and dramatics. Feeling that we had become a part of "old E. C.", we were proud as we sang the Alma Mater.



A busy college schedule doesn't prevent Brenda Berry, Judy MacKenzie, Susan McMillen, Bonnie Scott, Kenneth Mummo, and Horry Bell from socializing on Alpha Hall steps.

Robin Lowery, Lorenzo Archer, Joseph Fretz, Marilyn Bucknum, and Pauline Grubb enjoy the fresh air and sunshine, essentials for college students.





The approaching Christmas holidays filled us with the season's spirits. Christmas decorations appeared everywhere on campus. We'll never forget the huge Christmas tree that stood in the center of the dining hall. Caroling and parties were a part of the season's activities. Freshmen enjoyed the "Goodwill Party" sponsored by the sophomores at the Harrisburg Civic Club. The "Holly Ball," held at the Hershey Park Golf Club, highlighted the yuletide's festivities. In an atmosphere of winter wonderland, we danced beneath the sparkling crystal ball revolving among the candy canes and holly.

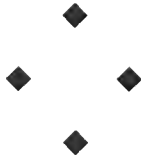


Judy Neilson, Ronald Reid, Tom Wilson, Richard Loose, and William Franks socialize outside the recreation room.



Linda Wagner tunes in the radio as Darla Bailor, Sandra Prosser, Judy Pearce, and Gloria Albright wait to hear the top hit song.

Gary MacPherson, Sue Jenks, Barbara Stackhouse, Evelyn Risser, and Judy Stout chat on Alpha Hall steps.



Sam Gruber holds the fountain for Robin Bonier, while Julie Harnly, Janet Myers, Joyce Taylor, and Mory Lou Shimmel wait their turn.

In spite of all this fun and frolic, we were glad for the arrival of Christmas vacation. Each of us was eager to renew old friendships at home and to relax before those long hours of studying for semester exams.

The return to campus was a joyous occasion as we exchanged our holiday experiences. But all too soon, the fun ceased and we began to study for the approaching semester exams. Late hours were spent in preparation. Tension in the dorms increased as time decreased. After that last exam, some of us wished that we had studied more, but, relieved that they were over, we more than welcomed the semester vacation.



Carol Mosimann, Arnita Thurston, Betty Dorr, and Robert Hanle take time out to rest on the steps of Alpha Hall after that long walk from Brinser Lecture Hall.



Happy about the Blue Jays' goal, (front row), Donna Bentz, Joan Wetzel, Carol Miller, (back row) Margaet Rudocille, Terry McAfee, Thayer Sieg, and Gail Moyer look on with hopes of a win.

# Class of 1962



Jon Singer, Brenda Brendlinger, John Chubb, Spencer Seros, and Larry Jones pause on the steps of the business building for a between-class discussion.



Here's another of those after-class gab sessions in which Barбора Dissinger, Carlton Hackett, Eunice Frey, Russell Showers, and Martho Myers compare courses and professors.

Browsing through the latest periodicals in the library are (seated) Eloise Gichner, Beth Deibert, Janet Stout, (standing) John Wenger, and Ted Wohnsiedler.



Our second semester was entered with more enthusiasm as we were now well adjusted to the campus and college life. In February, our class elected officers. Dale Kilhefner, president; Glenn Bucher, vice-president; and Linda Simkins, secretary-treasurer planned for the entertainment which our class was to provide for the all-college picnic at Hershey Park.

Janet Espenshade and Linda Wagner were selected as representatives from the freshman class to serve as attendants on the May Court.

# Class of 1962



Midway on West Drive, Glenn Aldinger, Jim Stone, Doris Shenk, Kay Touscher, and James Keiser stop to admire the beauty of the campus.

Before we knew it, we were "Dancing in the Dark" at the Penn Harris Hotel. Girls in their pastel-colored evening gowns reminded us that spring was just around the corner! The decorations, music, refreshments, and the people we were with made this a memorable evening!

Days passed by quickly, and after the May Day activities, we realized that our first year of college life would soon be over. Although we had to say "good-bye" to our roommates, friends, and campus life, our class looked forward to its sophomore year and the many new experiences and activities.



Relaxing on the library steps after completing a term report are Jack Lantz, Lyle Kerns, Janet Espenshade, and Craig Bosehore.



Robert Hartman, Elaine Semple, David George, Lois Fasnocht, and Merwyn Shonk wait for the class bell to ring before entering Rider Memorial Hall.



# Freshmen not pictured

Antolick, Gary R.  
 Baker, Sally L.  
 Barr, David A.  
 Becker, Paul D.  
 Bender, Glenn E.  
 Bernhard, H. Fred  
 Bernhard, Robert B.  
 Campbell, Thomas A.  
 Caputo, Ronald V.  
 Coble, Robert L.  
 Dormuth, Steven K., Jr.  
 Enek, M. Douglas  
 Fiedler, Joseph, Jr.  
 Fisher, Robert L.  
 Frank Woodrow  
 Geiselman, Ruth Ann  
 Gible, Wilbur W.  
 Heckman, James R.  
 Hendrickson, William D.  
 Hill, Marole L.  
 Howard, Thomas G.  
 Jones, Betty J.  
 Kauffman, John C.  
 Kemrer, Allan G.  
 Kerkeslager, Donald A.  
 Kerkeslager, Ellwood R.  
 Kindler, Herta M.  
 Kurnas, Barbara A.  
 Landis, Fred R.  
 Lauer, Ira E. Jr.  
 Lindemuth, David W.  
 Lott, George

Markey, Nancy L.  
 McNaughton, Francis C.  
 Mellott, Park  
 Miller, Robert Arison  
 Ness, Donna L.  
 Newcomer, Nancy  
 Richman, Donna J.  
 Riehl, Mary A.  
 Romberger, Frederick M.  
 Rudacille, Margaret M.  
 Seiders, Terry  
 Smoker, Joanne M.  
 Snavelly, Henry  
 Springer, George W.  
 Staskewitz, Roberta  
 Teufel, Robert E.  
 Thomas, Miles D.  
 Thome, Ronald E.  
 Weaver, James B.  
 Witmer, Donald  
 Wolgemuth, James H.  
 Woolcock, Daniel J.  
 Yamada, T. Albert  
 Yovanovic, Milan



Borbara Gettel, Ilse Langer, Kenneth Greider, Joanne Robinson, and Robert Peters await the opening of the College Store to purchase books and supplies.



Five freshmen, Tony Oskom, Brenda Craddock, Robert Losh, Ken Eshelmon, and Dick Gantz, go "Mad" in Alrho Hall Lounge after o busy college day.

Hopeful that same lucky car owner will offer them a ride to the Market Basket are Gerald Bufis, Judy Duke, Carol Kitzmiller, Ethel Musser, LeRoy Shubert, and Lester Merkey.

# *Student Activities*

Every association we have with someone else benefits us . . . each word exchanged . . . even a casual one . . . each task shared . . . even an unpleasant one . . . each makes us grow . . . college is a place to widen our interests . . . to expand our association with others . . . the campus organizations provide . . . for those of us who have a similar interest . . . expression of ourselves . . . the gain of experience from and with our friends . . . what is the gain in these shared experiences? . . . the capacity to live a rich life . . . and the better understanding of our fellow men.



# Student Government



Considering the revision of the constitution, President Jack Hedrick guides the Senate members: Bill Kendig, Dottie Hyde, Joyce Schaffner, Galen Young, Hank Osborn, Jim Knepper, Bill Haar, Marshal Pomroy, Barry Stevenson and Colvin Carter.



Sandra Swann, Gerda Haas, Beverly Styer, Ruth Varner, and Jeanette Risser, members of the committee on Women's Affairs, are relaxing by reading a magazine.



Committee on Men's Affairs is having a heated discussion in the New Residence Lounge. The members are: Ralph Baker, Eugene Gardan, Thomas Collins, Stanley Neyer, Earl Mellatt and Edwin Geiger.

AFTER MANY YEARS of development the Student Senate and the Committees of Men's and Women's Affairs have established themselves as important organizations in the life of Elizabethtown College. Their members are ready and willing to undertake and promote that which is beneficial to the student body and the College.

To accommodate the ever-enlarging student body, the Senate will continue to promote social and recreational programs for the College. As part of this year's program, the Student Senate initiated the all-campus blazer tradition. A Student Directory and jointly sponsored activities among the classes were further innovations. The 12-year-old Constitution took on a new look when several amendments were added, among them the changing of representation and combining of the offices of secretary and treasurer.

The Senate also assisted in arranging Homecoming Day and carried out the intramural sports program throughout the year.

From all indications, the Student Senate will play an important part in the success and development of Elizabethtown College.

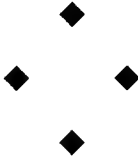
# Athletic Organizations



Members of Varsity E enjoy a talk given to them by Kent Replagle, president. Listening are Fred Zimmerman, Phyllis Maser, Ralph Baker, Glenn Bruckhart, Dale Zeiders, Eugene Gordon, Jack Hedrick, Donald Hasler, Jerry Reber, Bill Pensyl, Bernie Thame, Carl Zeigler, Hank Osborn, and Kitty Weaver.



Ready to defend themselves are members of the WAA. Shown are Gerda Haas, Carroll Hall, Judith Pearce, Doris Krieg, Sandra Swann, and Barbara Schlickemaier.



THE VARSITY E club first appeared on campus in 1951 as an outgrowth of the Cheerleading Athletic Association. Initiated by Athletic Director Ira R. Herr, it is an honorary society for those male and female athletes who hold varsity letters.

One of the foremost objectives of the club is to enhance the sports program of the College. In line with this, it supervises the printing of basketball programs and the sports program for Homecoming Day. Members also man the refreshment stands during athletic events.

The group enjoyed a trip to a Hershey hockey game during the year.

LAUNCHED IN 1957, the Women's Athletic Association is one of the newer campus organizations. Despite its relative youth, the WAA carries on an ambitious program designed to further athletics for women on the campus.

One of its prime projects is the supervision of a broad intramural sports program for women. Competition includes field hockey, volley ball, ping pong, bowling, basketball, badminton, tennis, archery, and softball.

Miss Julia Risser, coach of women's sports, is the founder of this rapidly-growing organization.



Ken Bowers points out some editorial techniques in the ETOWNIAN to the business and editorial staffs.

ORIGINALLY known as OUR COLLEGE TIMES, the College newspaper first appeared in May, 1904. It was published monthly from 1907 until 1957 when it became a bi-monthly publication. Not only has the paper undergone changes in format and content but in name also, for in 1933 it officially came to be known as the ETOWNIAN.

## *Etownian*

Circulation of the newspaper also has expanded. Today a circulation of 7,000 copies shows that the ETOWNIAN is an important source of communication for students, faculty, friends, and alumni of the College. Newspapers are sent to virtually every state as well as a number of foreign countries.

Honoring the 60th anniversary of the College, a historical column, "Down the Decades," was added to the 1958-59 ETOWNIAN. Knowing that Advisor James Yeingst was always available for advice, Ken Bowers, Editor-in-Chief, and his staff worked hard to maintain the campus journalistic standards.



Mrs. Hollinger guides Elaine Semple, Carol Heilman and Kitty Lou Abey, of the ETOWNIAN business staff, in distributing papers effectively.



While Clara Barrett and Joon Lank write articles, Beverly Styer and Joyce Miller prepare the next issue of the ETOWNIAN.

# Conestogan

WITH THE EXCEPTION of 1929, the College yearbook has recorded a word and picture history of campus life regularly since 1922.

Until 1951 when it became the CONESTOGAN, the yearbook was known as the ETONIAN. The basic format has remained virtually unchanged through the years.

The first edition was a 142-page paper-bound publication. The following year a hard cover was added, and except for 1928, has been used since. The metal-inlaid seal on the cover of the 1959 CONESTOGAN is the very latest in cover designs.

This year Editor Mary Jean Espenshade and staff worked loyally to produce a 176-page publication with a record distribution of 700 copies.



Looking over pictures to be used in the CONESTOGAN are: seated, Mary Jean Espenshade, editor; standing, Yvanne Mowery and Beverly Styer, assistant editors; Prof. James Yeingst, yearbook advisor.

Members of the CONESTOGAN staff are: standing from left to right, Belva Cassel, Virginia Wills, Madeline Brightbill, Joyce Wenger, Carol Heilman, Annie Keiter, Ruby Sykes, Jerry Bufis, Jonet Espenshade, Ilse Langer, Ruth Zeigler, Cloro Barrett, Judy MacKenzie. Seated are: Ron Vornor, Fran Johnstone, Marsha Grohom, Joyce Miller, Joan Lank, Jerry Gorlund, Virginia Horton, Ellen Gaines, and Ruth Koch.



Busy getting the CONESTOGAN ready for publication are members of the make-up staff and the sports staff. The make-up staff, seated around the table, includes Albert Yamado, Fran Johnstone, Mariolice Myers, (make-up editor), Margaret Brown, Beverly Jerrell, Pat Thompson, Linda Simkins, Barbara Stackhouse, and Jon Singer.

In the background are Donald Gorman, Kent Replogle, Jean Anne Rogers, Catherine Weaver, all members of the sports staff.





# *Student Christian Association*

SCA members, first row, Marsha Graham, Charles Denlinger, Fred Zimmerman, Douglas Enck; second row, Doris Large, Ruth Zeigler, Linda Hallinger, Nancy Baugher, Romaine Furry, Joyce Miller, Lloyd Nyce; third row, Kenneth Kreider Carroll Hall, Wilbur Gibble, Jean Appar, Sylvia Hixon, advisors Professor Byerly and Professor Snowden; fourth row, Barbara Yohe, Dottie Hyde; and leader Maynard Grunstra discuss a theological question.

THE STUDENT CHRISTIAN Association underwent a major change during the year in changing its name to the Elizabethtown College Christian Association. Hence, it became known as ECCA.

Despite the name change, the organization's record of service continued unabated. The annual Christmas party for children at the Neffsville Orphans Home was a major project during the yearend holiday season.

A well-attended banquet, featuring an address on "Psychology and Religion" by Rev. Richard Kirk, Lancaster, was held in January. Members of the group staged a religious play in the local area and in Ohio over the Easter holidays, while still others visited United Nations headquarters in New York over Easter recess.

IN MARCH, 1953, the first meeting of Eta Gamma Kappa was held. "The Galilean fellowship," which is the interpretation of the Greek words, was created to provide fellowship and discussion of common concern among men who are interested in a full-time church vocation.

This year there are seven denominations represented in the club and, in accordance with its constitution, the three officers represent three different denominations.

David Cassel, Professor Byerly, and Guy Kessler plan an Eta Gamma Kappa meeting.



# *Eta Gamma Kappa*



# Lutheran Student Association



The LSA invited guests to a supper. They are, left to right, Gloria Albright, Mrs. Anna Dorsheimer, member of the Student Committee of the host church; Dan Brensinger, Gloria Paules, Rev. Raymond L. Fetter, Mrs. Fetter, Joyce Hepplein, president; Ruth Ann Arnold, and Joyce Wenger.

HOSTING THE AREA conference of Lutheran Student Associations from neighboring campuses highlighted the year of the College LSA.

Working under the direction of Rev. Raymond Fetter, pastor of the Elizabethtown Lutheran Church, the 20 members of the local group held monthly meetings to implement their program.

The group enjoyed a spaghetti dinner early in the year and then arranged the area LSA meeting in the local church.

THE BRETHREN STUDENTS of the College participated in their first organized fellowship in 1955. The CBYF developed out of conformity to patterns on other Brethren college campuses, where such programs had already been established.

The CBYF is the main channel of the annual BSCM conferences, which are usually held during Thanksgiving vacation. This year, however, the BSCM conference was held in California during the Christmas holidays, with a delegation from our campus attending.

Discussing future plans in Alpha Living Room are CBYF members: seated on floor, left to right, Glenn Bucher, Nancy Baugher, Carroll Hall, James Weaver; on couches, Kathleen Weller, Kenneth Kreider, Lucille Hendricks, Charles Weaver, Linda Hallinger, Jerry Garland, Lynne Roudabush; standing, Shirley Raffensperger, James Wolgemuth, Edgar Hornly, Sylvia Hixson, Fred Buckendorff, Janet Wagner, Lloyd Nyce, and John Wenger.



## Church of the Brethren Youth Fellowship



Members of the college choir are: first row, left to right, Betsy Lahr, Lucy Hendricks, Carroll Hall, Nancy Baugher, Henrietta Kahr, Nevin Fisher, director; Joan Leatherman, Shirley Raffensperger, Fran Johnstone, Sylvia Santee, Ruth Ann Geiselman; second row, Mary Gladfelter, Jeanne Leber, Kathy Wisegarver, Sandra Reifsteck, Janice Ferster, Judy Nesbit, Lynne Roudabush, Evelyn Strauss, Liga Grinbergs; third row, Jane Barsumian, George Smith, Ken Kreider, Ralph Jahnsan, Charles Weaver, Glenn Bucher, Asher Halbleib, Ed Schopf, Marsha Graham; fourth row, Wilbur Gibble, Dale Kilhefner, Richard Merritt, Bob Heffley, Fred Landis, Douglas Cromer, Ken Dieffenbach, and Don Willoughby.

## *College Choir*

MUSIC HAS HAD A PLACE on the Elizabethtown College campus almost from the very beginning.

Choruses for both men and women were found in the early decades of college history. It was not until the combined choruses wished to sing the "Hallelujah Chorus" that an accompaniment was used. Since that time, the choir has sung with accompaniment as well as a cappella.

The choir, as we know it today, was founded and directed in 1934 by E. G. Meyer, now one of the College's librarians.

This early choir had only 24 members. The purpose of the choir was to give concerts at Churches of the Brethren to acquaint them with the College.

This year the choir, directed by Nevin W. Fisher and accompanied by J. Atlee Young, presented the most extensive list of concerts on record, including 38 in churches and several in high schools. Highlights of the season were tours in eastern and western Pennsylvania in April and a concert at the District Rotary Convention, which was held at the Hershey Community Theatre in March.

## PROGRAM

Invocation and Choral Response . . . . *Cruikshank*  
 "Holy, Holy, Holy"

### I

Sing and Rejoice . . . . . *Will James*  
 Dedication . . . . . *R. Franz—N. Cain*  
 Indifference (When Jesus Came to Golgotha)  
*Edwin M. Potent*

The Glory of God in Nature . . . . . *Beethoven*

### II

#### THE COLLEGE WOMEN'S QUARTET

Lucille Hendricks, *First Soprano*  
 Nancy Baugher, *Second Soprano*  
 Shirley Raffensberger, *First Alto*  
 Lynne Roudabush, *Second Alto*

### III

The Creation . . . . . *Willy Richter*  
 Galilean Easter Carol . . . . . *R. Dean Shure*  
 God Is Great . . . . . *From the "Ephrata Cloister"*  
*Arranged by Joseph W. Clokey*  
 Brother James' Air (Twenty-third Psalm)  
*Arranged by Gordon Jacob*

### IV

O Loving Father . . . . . *Nevin W. Fisher*  
 Solo stanza sung by Asher Halbleib, *Baritone*  
 There Comes to My Heart One Sweet Strain  
*Peter Bilhorn*

Solo stanza sung by Mary Gladfelder, *Soprano*  
 Death, Where Is Thy Sting? . . *Henry G. Gottshall*

### V

#### THE COLLEGE MEN'S QUARTET

Wilbur Gibble, *First Tenor*  
 Charles Weaver, *Second Tenor*  
 Asher Halbleib, *First Bass*  
 Dale Kilhefner, *Second Bass*

### VI

List! The Cherubic Host—from "The Holy City"  
*A. R. Gaul*

Women's Quartet, Women's Chorus and Soloists  
 O Hear A Voice A-Prayin' . . . . *Houston Bright*  
 O Church of Christ, Count Well Your Charge  
*D. R. Frederick*

Benediction and Choral Response . . *John Stainer*  
 "Sevenfold Amen"

HOMEcoming, THE PRODUCTION of "The Potting Shed," and May Day were made more enjoyable by the music of our College orchestra. This group, under the direction of Mr. Noah Klauss, met for practice on Thursday evenings in Brinser Lecture Room.

We were fortunate in obtaining the services of Mr. Klauss as conductor, for he was also busily occupied as Conductor for the Harrisburg Youth Symphony, Assistant Conductor of the Harrisburg Symphony Orchestra, and Conductor of the Elizabethtown Area High School Orchestra.

Three members of our orchestra, Janice Ferster, George Smith, and Joe Wagenseller, claimed the distinction of playing in the Harrisburg Youth Symphony.

Pausing for a moment during rehearsal are the members of the College orchestra. They are, seated, front row, left to right, Martha Dumire, Nancy Baugher, Janice Ferster, Belva Cassel, Jane Barsumian, Mary Feaser, George Smith; second row, Gloria Albright, John Minnich, Elizabeth Darr, Alice Burrows, Susan Mackey; standing, back row, Ken Eshelman, Bill Everhart, Dale Kilhefner, Joe Wagenseller, Merwyn Shonk, David Barr, and Noah Klauss, director.

## Orchestra





Donald Knab, president of Sock and Buskin, prompts Joyce Hepplein, Beverly Jerrell, Ronald Mazurik, Joyce Wenger and Sandra Lutz during rehearsal.

MEMBERS OF THE Sock and Buskin drama club were among the busiest on campus during the year. Under the direction of Mrs. C. G. Enterline, advisor, the club staged various productions almost continually.

Opening the campus drama program was the Homecoming Day production of *Aria da Capo*, which was followed by *The Potting Shed* in November. Later the group worked with the choir in a Christmas pageant, *Feast of the Star*.

In addition, campus dramatists assisted in *Madbeth*, the Junior Class Show. *Christ in the Concrete City* was staged in various area churches. Six one-act plays were produced in April.

## Student Education Association of Pennsylvania

# Sock and Buskin

SEAP APPLIED for its first charter in 1948. The club was then named the Future Teachers of America, the name being changed in 1957. Since the beginning it has been an active club under the advisorship of Prof. Hoover.

Students belonging to this association have all the privileges of a professional teacher. They receive state and national publications and through discussion groups, speakers, and movies they learn more about the responsibilities of the teacher.

To become acquainted with the laws of the teaching profession is one of the aims of the club.

SEAP members plan activities for the next meeting. Seated on floor are, left to right, Kathleen Weller, Mary Jean Espenshade and Lynn Roudabush; second row, seated, Joyce Hepplein, Elizabeth Lohr, Clara Barrett, Ruby Sykes, Ruth Varner, professor E. B. Hoover, Marjorie Price, Patricia Nase; standing, Henrietta Kohr, Nancy Baugher, Barbara Yohe, Joyce Wenger, Gerda Haas and Helen Ober.



# Political Science Club



Political Science Club members Lee Miller, Joyce Wenger, Ruby Sykes, Sung Ho Hahn, Dottie Hyde, Belva Cossel, Morton Feder (seated) and Rosalind Griffin, Karen Koski, Joyce Taylor, Brenda Berry, and Loy Garber (standing) seem to be enjoying the discussion of a bill.

RINGING OF THE GAVEL, voices shouting "point of order," and formulating bills are three things that can be found at the meetings of the Political Science Club, under Dr. Reuning, club adviser.

Fostering an understanding of American governmental procedures and furthering a knowledge of international affairs are the dual purposes of the club.

The main event for this year was the Regional Conference of ICG, which was held at Millersville on March 7. Club members also went to the State Convention of ICG at Harrisburg on April 16 to 18.

PHI BETA CHI has one main purpose. It is to maintain and stimulate interest in scientific subjects through practical applications. Profs. Custer and Tyndall, advisors, try to see that this is accomplished.

The club was established at the beginning of the fall semester in 1932. Dr. and Mrs. Apgar acted as advisors until a few years ago.

Movies, speakers, and field trips are activities that were enjoyed throughout the year. A fishing trip to Delaware, a hike to Mt. Gretna, and a visit to the Armstrong Cork Company were of special interest to this group.



# Phi Beta Chi

Pat Williams focuses the microscope as other members of Phi Beta Chi Don Monn, Joyce Miller, and Judy Wallin (seated) and Hank Osborn, Net Butt, Carl Zeigler, Ken Dieffenbach, and advisor Professor Custer patiently await their turn to look at the slide.

# *Sports*

The shrill of a whistle . . . the cheer of the crowd . . . the record of wins and losses . . . the practices to achieve the necessary skills . . . these are a part of athletic activities . . . but more than these . . . is the daily growth in ourselves . . . the laughter as we share in a joke on our coach . . . the companionship traveling to away games . . . the sense of precision in teamwork properly used . . . the fellowship and lasting friendships born of these activities . . . here we grow . . . here we become better suited to assume our places in the world.





Rousing team spirit is the exciting job of the cheerleaders who are, left to right, standing: Marty Reese, Judy Nesbit, Marjorie Kernen, Judy MacKenzie, Judy Eby; kneeling: Jean Anne Rogers, Jeanette Risser, Carroll Hall, Linda Wagner, and Ruth Risser.

## *Cheerleaders*

CONSTITUTING one section of loyal supporters to our basketball team, the cheerleaders and pep band take the court at all home basketball games and those contests within a fifty mile radius of campus. The pep band, a real asset, is composed of all women and establishes a winning spirit as they strike up "When The Saints Go Marching In." Accompanying the musical background, the cheerleaders encourage the crowd spirit with a variety of cheers—"Go, Fight, Win," "Team Cheer," "Echo," and "Yea, Blue Jays Fight," naming just a few.

The fans cannot be excluded from this group because without their interest, the cheerleaders and pep band would be an act all their own.

## *Pep Band*



Strains of "When the Saints Go Marching In" are heard as the basketball team enters the gym. Playing are Bette Holman, Marsha Graham, Sally Martin, Nancy Kurtz, Joan Riggler, and Joyce Wenger.





Soccer team, left to right, standing, Jerry Reber, Bill Hoar, Earl Mellatt, Fred Zimmerman, Dan Schwartz, Coach Ira Herr, Dave Higinbotham, Hank Osborn, James Tadd, Ronald Schubert, Paul Leicht, Warner Cheeks; kneeling, Manny Tejada, Bill Kendig, Herb Spannuth, Carrall Hershey, Lance Strayer, Gene Wise, Jim Knepper, Bob Krebs, Bob Lash, Russ Glazier, and Elwaad Kerkeslager.

## Soccer

ELIZABETHTOWN COLLEGE continued to glow in the soccer spotlight in the East by compiling a very respectable seasonal log of eight wins and two losses, equalling last year's history-setting record.

This season also marked the return of Ira Herr as coach. Herr, who started soccer at the school in 1937, and has coached the sport on and off for about nine years, took over for Paul Greene, who resigned to become Director of Admissions.

Captained by All-America candidate Gene Wise, the Jaymen booted home 55 goals over the season for an average of 5.5 per game. Defensively the Blue and Gray allowed only 16 tallies, less than two per game.

Bill Hoar led the scoring parade for the Herrmen with 14 goals, followed closely by Manny Tejada, who learned soccer in his native Guatemala, with 12 counters, and Carroll Hershey with nine goals.

In summation, the booters combined good, aggressive team play, ball control and ball handling for their successful season.

### SOCCKER RECORD—1958

Elizabethtown	3—Wilkes	2 (A)
Elizabethtown	1—West Chester	2 (H)
Elizabethtown	13—Lincoln	0 (A)
Elizabethtown	7—LaSalle	1 (H)
Elizabethtown	2—Drexel	4 (H)
Elizabethtown	7—Lycoming	1 (A)
Elizabethtown	3—E. Stroudsburg	1 (H)
Elizabethtown	5—Bucknell	2 (A)
Elizabethtown	9—Lock Haven	2 (H)
Elizabethtown	5—Gettysburg	1 (A)

Herb Spannuth blocks a Drexel kick, while Gene Wise and Fred Zimmerman wait to move the ball for the Blue Jays.





Members of Varsity Field Hockey Team are left to right: Jeannette Risser, Carol Bush, Kay Jones, Mary Ellen Graff, JaAnn Robinson, Carolyn Schneider, Catherine Weaver, Jean Anne Rogers, Nancy Kurtz, Phyllis Moser, Judy Pearce, Eloise Gichner, Ginger Harton, and Judy Eby. Behind the group are: Diana Leister, manager; Julia Risser, coach; and Ruth Ann Arnold manager

## Hockey

ON COLLEGE HILL victory rang out! The '58 hockey season spelled success for Coach Julia Risser's hustling hockeyites who handed their opponents a total of six setbacks. One goal tied East Stroudsburg with only a minute of play left in the second half. This has been the best showing the lassies of E-town have ever had in competition with ESSTC. The perfect season outlook was squelched by the Gettysburg eleven who traveled to defeat us 2-0.

Kay Jones, sophomore, and Jeanne Risser, senior, led the Blue Bird attack with seasonal scoring records of 10 and 8 respectively. Phyllis Moser came in third with 5 counters. A total of 28 goals were recorded by the Jays in their offensive play. The solid defensive held the rival teams to 6 goals. Nancy Kurtz, Jean Anne Rogers, and Kitty Weaver, all seniors, formed the hub of the resistance.

November came with seniors Nancy Kurtz, Phyllis Moser, Jeanne Risser, Jean Anne Rogers, Carolyn Schneider, Joyce Schaffner, Clara Barrett, and Margaret Brown; junior Carol Beard; and sophomore Mary Ellen Groff playing their last season for E. C.

Junior Varsity Field Hockey Team members are left to right: Clara Barrett, Patricia Usinger, Sidney Pegram, Patricia Williams, Ruth Tice, Margaret Brown, Martha Eppley, Sally Ann Martin, Martha Reese, Julia Risser, coach; Lynn Hablett, manager; Linda Wagner, Janet Myers, Sandra Swann, Janet Espenshade, Virginia Patton, Doris Krieg, Louise Harning, Arnita Thurston, and Carol Beard.

### HOCKEY RECORD—1958

Elizabethtown 3—Dickinson	1 (H)
Elizabethtown 1—East Stroudsburg	1 (A)
Elizabethtown 3—Millersville	O (A)
Elizabethtown 0—Gettysburg	2 (H)
Elizabethtown 6—Shippensburg	1 (H)
Elizabethtown 4—Lebanon Valley	0 (A)
Elizabethtown 2—Millersville	1 (H)
Elizabethtown 9—Albright	O (A)

Varsity: 6 wins, 1 loss, and 1 tie.

Junior Varsity: 4 wins, 2 losses, and 1 tie.



# Women's Basketball



Coach Julia Risser and the Jaygals, women's basketball team, pause to smile before a game. They are, left to right, back row: Sandra Swann, Ruth Anne Tice, Linda Elliott, Barbara Schlickemaier, Barbara Jones; third row: Judy Eby, Pat Williams, Kathy Weller, Joan Rigler, Catherine Weaver, Kay Jones, Carroll Hall; second row: Janet Myers, JoAnn Robinson, Pat Usinger, Miss Risser, Phyllis Moser, Sandra Reifsteck, Barbara Yohe; first row: Martha Eppley, manager; Martha Reese, scorekeeper; Jean Anne Rogers, manager, and Sandra MacLaughlin, timekeeper.

DROPPING THEIR FINAL two games of the season, the Elizabethtown College women's basketball squad fell below the .500 mark in season's play and ended the year with a record of four wins and six defeats.

The 4-6 mark equalled last year's record and is the second losing season in the four years Miss Julia Risser has coached the Blue Birds. Miss Risser's overall record to date is 23 victories against 18 defeats.

Leading scorers for the Blue Birds were Carroll Hall, who had 138 points, and Sandra Swann, who had 133.

Three seniors ended their court careers this year. They are Phyllis Moser, Joan Rigler, and Catherine Weaver.

## THE 1959 RECORD

Elizabethtown 27—Gettysburg	40 (H)
Elizabethtown 51—Millersville	48 (A)
Elizabethtown 61—Shippensburg	40 (H)
Elizabethtown 39—Lebanon Valley	46 (A)
Elizabethtown 43—Bridgewater	54 (H)
Elizabethtown 55—Millersville	47 (H)
Elizabethtown 32—Gettysburg	53 (A)
Elizabethtown 59—Lebanon Valley	51 (H)
Elizabethtown 52—E. Stroudsburg	58 (H)
Elizabethtown 46—Lock Haven	65 (A)



Cross Country team left to right, standing, Tony Oskam, Helmut Baer, Coach Ira Herr, Donald Hosler, Glenn Bruckhart; kneeling, Wilbur Gibble, Bernie Thome, Ray Springfield, and Jon Singer.

## Cross Country

PATIENCE, FORTITUDE, and some good talent finally paid off for the Blue Jays as they compiled a highly successful cross country record of 6 wins against 2 defeats, the best in the three-year history of the sport here.

In the first two years of the sport, the Jays won only three meets. But Coach Ira R. Herr was optimistic. "It takes time to get a winning team in a newly-established sport." Events proved that this was the year.

The Blue Jay harriers were led by Glenn "Stretch" Bruckhart, Bernie Thome, and Wilbur Gibble, who made a habit of showing their heels to the opposition. Helmut Baer and Don Hosler also showed well and gave the squad that all-important depth.

In retrospect: a great year.

### CROSS COUNTRY—1958

Elizabethtown 34—Dickinson	25 (H)
Elizabethtown 20—P.M.C.	38 (H)
Elizabethtown 15—Muhlenberg	47 (H)
Elizabethtown 17—Albright	41 (H)
Elizabethtown 27—Moravian	28 (A)
Elizabethtown 33—Juniata	22 (A)
Elizabethtown 18—Gettysburg	40 (H)
Elizabethtown 27—F. & M.	28 (A)

(Low score wins)

They're off and running!



## Wrestling



Blue Jay wrestlers, 1959 edition . . . Kneeling, from left: Jim Weaver, Bill Kendig, Colvin Carter, and Wayne Howells. Standing, Coach Dick Hershey, Larry Hetzel, Dave Anwyll, Helmut Baer, and Manager Charles Weaver.

AFTER WINNING their first two meets, the Blue Jay wrestlers went into a prolonged slump, which saw them lose their final nine meets in succession.

Despite the dismal record, Coach Dick Hershey had a few things to brighten his life. Co-captains Dave Anwyll and Bill Kendig had winning records as did Freshman Jim Weaver. Kendig was sidelined late in the season with a shoulder injury.

In post-season competition, Anwyll, Weaver, and Senior Colvin Carter carried the Elizabethtown banner into Middle Atlantic Conference competition at Hofstra College.

### THE RECORD—1958-59

Elizabethtown 25—West. Maryland	11 (H)
Elizabethtown 10—Juniata	26 (H)
Elizabethtown 8—Dickinson	22 (A)
Elizabethtown 14—Lebanon Valley	16 (A)
Elizabethtown 16—Albright	18 (A)
Elizabethtown 8—Gettysburg	28 (H)
Elizabethtown 10—Temple	22 (A)
Elizabethtown 8—P.M.C.	22 (H)
Elizabethtown 7—Ursinus	30 (A)
Elizabethtown 8—Lycoming	30 (H)
Elizabethtown 5—Moravian	31 (H)



Co-Captain Dave Anwyll points out some techniques as Jim Weaver tries for a hold on Lorry Hetzel. Robin Lawery watches the workout.



Members of the basketball team are, left to right, standing, Bill Dengler, manager, Ed Harnly, Ed Geiger, Bill Pensyl, Coach Don Smith, Glenn Bruckhart, Bob Geiger Sheldon Dent, Waadrow Frank, manager; kneeling, Sam Gruber, Jack Hedrick, Kent Replogle, Marty Hefferan, Gene Kerns and Eugene Gordon.

## Basketball

IN THE LATE STAGES of the 1958-'59 basketball season, when the Blue Jays were fighting to keep their heads above the .500 mark, Coach Don Smith remarked:

"If this team finishes with a winning record, I'll consider it one of my finest because we've played a rough schedule."

As it turned out, the Jays did finish with a winning record, 11 victories against 10 defeats.

Led by Bill Pensyl, who scored 1,372 points during his basketball career here, including 487 in his last year, the Jays improved constantly as the season wore on. Sophomore Bob Geiger's 330 points and Senior Kent Replogle's 174 markers added depth to the attack.

Other stalwarts were Seniors Ed Geiger, Jack Hedrick, and Sheldon Dent and Sophomores Glenn Bruckhart, Gene Gordon, and Marty Hefferan. Freshmen Gene Kerns and Sam Gruber gave promise for future years.

Pensyl capped a brilliant career by being named to the Eastern Collegiate Athletic Conference All-Star team for the season.

### THE RECORD—1958-59

Elizabethtown 57—Mt. St. Mary's	79 (H)
Elizabethtown 79—Lycoming	76 (A)
Elizabethtown 81—Juniata	100 (H)
Elizabethtown 74—P.M.C.	67 (H)
Elizabethtown 69—St. Joseph's	94 (A)
Elizabethtown 99—Dickinson	80 (H)
Elizabethtown 84—Wilkes	79 (H)
Elizabethtown 79—Lebanon Valley	78 (A)
Elizabethtown 66—Juniata	80 (A)
Elizabethtown 76—Moravian	96 (A)
Elizabethtown 65—Millersville	70 (H)
Elizabethtown 77—Lebanon Valley	67 (H)
Elizabethtown 70—Rutgers, S. J.	74 (A)
Elizabethtown 73—Millersville	61 (A)
Elizabethtown 66—Scranton	68 (H)
Elizabethtown 82—Lincoln	69 (A)
Elizabethtown 64—West Chester	54 (A)
Elizabethtown 85—Lycoming	64 (H)
Elizabethtown 54—Gettysburg	65 (A)
Elizabethtown 88—Rider	80 (H)
Elizabethtown 65—Albright	74 (A)

## Seniors



Sheldon Dent



Ed Geiger



Strategy session. . . . The five senior members of the 1958-'59 basketball squad gather around Coach Don Smith for some play diagramming. From left, they are Jack Hedrick, Bill Pennsly, Sheldon Dent, Ed Geiger, and Kent Replogle.

Kent Replogle

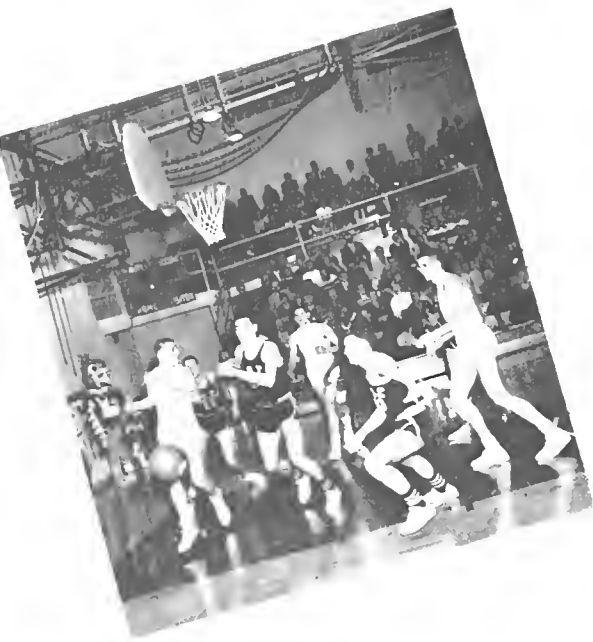


Jack Hedrick



Bill Pennsly











Blue jay tennis squad, 1959 version . . . From left, Lee Connor, Charles Groff, Captain Kent Replogle, Gene Gordon, Coach Don Smith, Wayne Howells, Lloyd Nyce, John Wenger, and Robert Peters. Several members were absent when the photo was taken.

## *Tennis*

HOPING TO IMPROVE their 1958 record of five victories against seven defeats, the Elizabethtown College tennis team opened practice as soon as spring's first faint blush appeared on the weather scene.

Led by Captain Kent Replogle, who split 12 singles matches last year to lead the squad, the Blue Jays' main problem was thought to be depth. Following Replogle were Gene Gordon, Charles Groff, and Jerry Garland, all of whom played fine tennis last year.

Coach Don Smith's big problem, at least during the early practices, was to come up with some newcomers who could back up the top men. As the CONESTOGAN went to press, the problem was not resolved.

### 1959 TENNIS SCHEDULE

April	7	Millersville	(A)
April	10	Franklin and Marshall	(A)
April	15	Lycoming	(H)
April	16	Washington	(H)
April	18	Albright	(H)
April	25	Juniata	(H)
April	30	Ursinus	(H)
May	7	Millersville	(H)
May	13	Juniata	(A)
May	15	MASCAC	
May	16	Gettysburg	(A)
May	20	Lebanon Valley	(A)
May	23	Dickinson	(H)



Blue Jay diamond forces . . . From left (standing) Coach Iro R. Herr, Warner Cheeks, Jim Ackerman, Bob Geiger, Sheldon Dent, Bill Pensyl, Lloyd Bortzfield, Russ Glazier, John Sabbi, Gary Miller, and Bob Teulfel. (Kneeling) Gene Kerns, Larry Hetzel, Ellwood Kerkeslager, Lynn Saylor, Bill Longenecker, Gene Wise, Morty Hefferan, Glenn Bender, Pete Liacouras, and Carroll Hershey. Kneeling in the foreground are managers Dave Correll and Bryon Seese.

HOPES FOR ANOTHER successful baseball season were high as the CONESTOGAN went to press. The optimism was based on the return of a solid core of seasoned performers and a very promising group of newcomers.

Back for another fling were First Baseman Lloyd Bortzfield, Second Baseman Carroll Hershey, Pitchers Bob Geiger, Glen Crum, and Sheldon Dent, Catcher Bill Pensyl, and Outfielders Gene Wise and Warner Cheeks.

Among the newcomers who figured to make the squad in some capacity were Shortstop Gene Kerns and Third Baseman Ellwood Kerkeslager.

Last year's club finished at a fast clip to compile a record of 10 wins, 6 defeats, and a tie. Gene Wise led the team in hitting with a .462 average. Other leading hitters were Jim Sarbaugh (.367), Carroll Hershey (.394), and Lloyd Bortzfield (.388). Gene Bucher was the top pitcher with a record of five wins, two defeats.

# Baseball

## THE 1959 BASEBALL SCHEDULE

April 4	P.M.C.	(A)
April 7	Shepherd	(A)
April 10	Temple	(H)
April 11	Lebanon Valley	(H)
April 15	Lycoming	(H)
April 16	Washington	(H)
April 18	Scranton	(A)
April 23	Susquehanna	(A)
April 25	Juniata	(H)
April 27	Gettysburg	(H)
April 29	Drexel	(A)
May 2	Ursinus	(A)
May 5	Millersville	(H)
May 9	Franklin and Marshall	(H)
May 13	Juniata	(A)
May 15	St. Joseph's	(A)
May 16	Albright	(H)
May 20	Lebanon Valley	(A)
May 23	Dickinson	(H)
May 30	Scranton	(H)

# *Campus Life*

From freshman orientation week to graduation . . . our campus life is highlighted . . . by the many special occasions . . . we have taken part in . . . each new experience has played its role . . . in shaping our futures . . . and our characters . . . such occasions will play a big part . . . in our lives after graduation . . . it is beneficial to us . . . to participate in them now . . . who can say . . . what is the most important facet of education.



# Convocation

ELIZABETHTOWN COLLEGE most appropriately dedicated the new wing of the Gibble Science Building during the Charter Day Convocation program, September 24. The service officially launched the 60th anniversary year.

The speaker for the occasion was the Rev. E. Fay Campbell, D.D., director of Higher Education, United Presbyterian Church, U.S.A. His topic was "The Role of the Church-Related College Today."

Dr. Joseph W. Kettering, chairman of the Board of Trustees, was presented the key to the new wing by Paul M. Grubb, chairman of the Trustees' Committee on Buildings and Grounds.

To complete the program, an honorary degree of Doctor of Science of Pedagogy was conferred upon David E. Brinser, an alumnus of Elizabethtown College, a retired public school teacher, and a contributor to the Development Program.

President A. C. Baugher presided during the ceremony. Dean Roy McAuley read the citation accompanying the degree and Dr. O. F. Stambaugh adjusted the hood.



Honored. . . . David E. Brinser receives an honorary degree from Pres. A. C. Baugher as Dr. O. F. Stombough adjusts the academic hood.

Members of the science faculty and Convocation program personnel pose in front of the new wing of the Gibble Science Hall, which was dedicated during Convocation services.



Dr. E. Fay Campbell

## Graduation



HON. ARTHUR S. FLEMMING  
Commencement Speaker

A MEMBER OF THE CABINET of President Dwight D. Eisenhower, Secretary of Health, Education, and Welfare Arthur S. Flemming delivered the feature address as more than a hundred seniors were granted degrees to climax the College's 60th anniversary year.

In his address, delivered during Commencement exercises, Sec. Flemming delved into the need for more education in the United States as a means of fortifying our way of life.

The Baccalaureate sermon was delivered by Dr. M. Guy West, pastor of the First Church of the Brethren in York, Pa. He, Sec. Flemming, and Dr. W. W. Eshelman, an alumnus of the College and president-elect of the National Education Association, were granted honorary degrees during the Commencement activities.

Pres. A. C. Baugher presided during the exercises marking graduation weekend.



DR. W. W. ESHELMAN



DR. M. GUY WEST

## Homecoming



Land ahoy . . . freshman cheering committee . . . crossing Lake Placida . . . preparatory to the tug of war.



Pull, men, pull!!! . . . freshman boys uphold their class honor . . . cheering squad looks on.

Man, you're ugly. . . Dick Markowitz, Neal Krouss, Ned Butt, and Terry Bush (from left) seek voter appeal in the Ugly Man Contest held during Homecoming Day.



WITH HOMECOMING DAY activities came the close of the "Elizabethtown College 60th Anniversary Week," which was proclaimed by action of the Elizabethtown Borough Council.

To highlight the day, Elizabethtown College's second Homecoming Queen was chosen. Carol Rees, a freshman from Fort Washington, Pa., was the choice of the judges, all alumni.

To add to the day of excitement and fun the freshman men won the traditional tug-of-war across Lake Placida and the freshman women won the cheering contest.



◆ ◆

The Jay Gals field hockey team defeated Shippensburg State Teachers College with a score of 6-1. The Jayvees followed suit and won, 4-1.

The Blue Jay soccer team's defeat by Drexel Tech did not alter the spirit of the day in the least.

The program of the evening, "Ivy Time," featured, along with the crowning of the queen, the crowning of the winner of the Ugly Man Contest, who was Ned Butt, senior. The program also consisted of an array of stage acts and musical numbers.

Throughout the day Alpha Hall's living room was the scene of the 60th anniversary exhibit, entitled "Our College—Past and Future."

To many, this was Elizabethtown College's most successful Homecoming.



Crowned. . . Freshman Carol Rees is crowned Homecoming Queen by Senior President Bob Miller.

Homecoming Court. . . Climoxing Homecoming Day, members of the Queen's court and their escorts pose on the auditorium stage.





From *Aria da Capo* . . . George Smith and Shelley Bannister go through their paces on stage in *Homecoming Day* production.



Claude Foreman . . . pleased with himself . . . taking over the stage for a moment . . . from "*Aria da Capo*."

## *Dramatic Productions*

Symbolic characters from "*Everyman*" . . . Mary Znotens . . . Janice Ferster . . . Robin Bonier . . . Terry Bush . . . Marialice Myers . . . John Brightbill . . . Joyce Schaffner . . . Libby Peacock.



In the midst of banquet furniture . . . Richard Falstick plays in . . . "*Aria da Capo*."



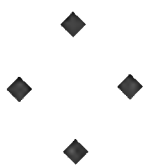
"Suicide, anyone?" . . . Ed Schopf shows his present for Polly Grubb . . . Joyce Wenger, Asher Holbleib and Carol Bush look on . . . Don Knaub feigns disdain . . . from "The Potting Shed."



Try to remember . . . Shirley Raffensberger concentrates . . . Orrie Feitsmo looks interested . . . Ed Schopf appears worried . . . "The Potting Shed."



Carol Heilmon expresses disapproval . . . of Don Monn's unclerical conduct . . . Ed Schopf tries to find out what happened in "The Potting Shed."





Tennis champs . . . Shirley Raffensperger . . . Eugene Gordon . . . smile after victory.

## *Intramural Sports* ◆



Over it goes . . . possibly another point . . . girls play intramural volleyball.

Girls' basketball . . . way back when . . .



Hike! . . . Terry Bush . . . starts the practice session . . . football intramurals.





Nancy Kurtz . . . women's intramural ping-pong champ . . . challenges Stan Butler.



Men's basketball, 1926 version . . . Recognize the fellow standing at the right? It's Dr. Charles Weaver, a current faculty member.



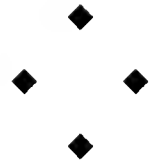
Intramural baseball workouts . . . Terry and Jerry . . . looks like fun.



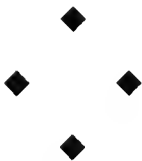
Up in the air . . . and down . . . Milt Smith . . . sets one up . . . for men's intramural volleyball.



All hail the queen! . . Elizabeth Lefever, 1958 May Queen . . . attended by her maid-of-honor, Audrey Kilhefner . . . and court.



## *May Day*



Awaiting the homage of her subjects . . . the 1958 Queen mounts her throne . . . the court watching May Day in Storyland . . . Jane MacNeal, Phyllis Moser, Sidney Pegram, Mara Znotens, Audrey Kilhefner, Queen Elizabeth Lefever, Jeanne Risser, Joon Birdsoll, Foye Graff, Libby Forrer.

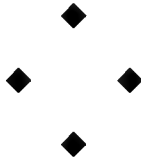


May Queen Phyllis Moser and her Maid of Honor, Ligo Grinbergs, prepare to hold court in the lounge of the New Women's Dorm.

MAY DAY was another jewel in the crown of activities that marked the 60th anniversary year for Elizabethtown College.

Before admiring throngs, students carried out a program dealing with the anniversary theme while Queen Phyllis Moser looked on from her throne. Ligo Grinbergs served as Maid-of-Honor for the occasion.

Flashing cameras recorded the occasion for posterity as beaming parents, friends, and others look on. It was a banner day and certainly one of the highlights of this anniversary year.



Beauty decks the steps of the New Women's Dorm as the May Court poses. They are Janet Espenshade, Jean Anne Rogers, Carol Bush, Sidney Pegram, Sondra Lutz, Linda Wogner, Jeanette Risser, Maid of Honor Ligo Grinbergs, Queen Phyllis Moser, and Ruth Ziegler.





Mrs. Oscar F. Stambough works behind the scenes in the College library to improve service for students.

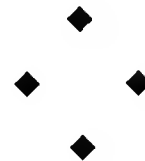
## *Helping Hands*



Religious discussion. . . . Rev. Nevin Zuck, College pastor, checks over a display of books on religion with Shirley Raffensperger.



Mrs. E. G. Meyer prepares for the arrival of a student studying piano under her direction.





## Women's Auxiliary



Mrs. Shirley Seldomridge, Mrs. Ruth Baldwin, Miss Ethel M. B. Wenger, President; and Mrs. Esther Papsen, from left, make arrangements for a luncheon meeting in March.

THE WOMEN'S AUXILIARY of Elizabethtown College, a young but extremely active organization, moved from one project to another in serving the College and didn't even bother to come up for air.

At a luncheon meeting in February, the group completed payment on furnishings for a pajama lounge in the New Women's Residence and then announced plans to equip a darkroom on campus with a full array of photography gear.

Under the leadership of Miss Ethel M. B. Wenger, president, the Auxiliary also mapped plans for doubling the current membership of 950 and for taking a more active role in May Day and Homecoming Day exercises.

Here is an organization whose helping hand is growing ever larger in service to the College.

Members of the executive council of the Women's Auxiliary meet in the Lebanon Country Club to plan the year's activities.



## *Frosh Initiation*



Button, frosh . . . typical initiation week pose . . . how we love the committee members.

THE STUDENT SENATE had a great task when it began orienting its largest freshman class of 218 on September 15.

Of course, there was freshman initiation conducted by the Freshman Initiation Committee (FIC) in conjunction with the Student Senate. It was brought to a thrilling close with a bonfire at which the freshmen finally burned their name tags and hard boiled eggs. Refreshments followed the ceremony.



Campus helpers . . . volunteers? . . . by committee orders, of course.



"We hail thee," . . . faces front, girls . . . what happened to everyone's shoes?



Gov. George M. Leader speaks in the New Residence Hall during his campaign for U.S. Senator.



Times have changed . . . Three students go about their work in the newly-renovated Chemistry lab (above), while Pres. A. C. Baugher is pictured with a group of his students in the old days when he was a Chemistry prof here.



Peppy session . . . Members of the cheerleading squad drum up some student enthusiasm during an outdoor pep rally during soccer season.



A bit of culture added . . . Dr. and Mrs. Charles Appar (left) presented a bust of Asklepios, the Greek god of healing, to the College during a meeting of the Phi Beta science club. Club President Dan Monn looks on.



Ever constant . . . the quietude of Lake Placid.



"You don't mean it?" . . . Dean Roy McAuley (center) wears a quizzed expression during Homecoming Day exercises.



Cold, cold turkey . . . Miss Betty Holsinger, College dietician, looks over her stock of frozen turkeys to be served at the Thanksgiving meal.



The campus after dark . . . burning the midnight oil, the dorm gossip, the fun, the friendship, the memories.



Christmas on campus . . . Coeds in the New Residence Hall put the final touches on the dorm tree. From left, they are Linda Hollinger, Janet Bair, Marian Barrner, Carol Heilman, and Ruth Zeigler (in rear).



California, here we come . . . Members of the CBYF group pose for an informal shot before leaving for a conference in California during the Christmas holidays.



The College library . . . in the days before 1950 when it was located in Rider Memorial Hall.



At home with Dean Hackman . . . students enjoy a casual chat now and then. From left, the students are Ilse Longer, Lee Miller, Albert Yamada, Herta Kindler, and Arnita Thurston.



On the air . . . Kent Replogle (seated) looks over a script for one of the semi-weekly radio programs produced on WEZN by the Public Relations Office. Jim Eby (left), who did some recording work, and George Morgan (right) station announcer, look on. In the background is Will Groff, WEZN program director.



Door decorations, a dormitory custom of long-standing.



He didn't make it . . . One member of the faculty basketball squad is carried from the floor during the game with the Student Senate. The victors (or victims) are pictured at the right.



High button shoe era . . . Students in a penmanship class go through a practice session in the early days on campus.



"Ughhh" . . . Members of a physical culture class (now a forgotten institution) go through their paces in the good old days on campus.



"I think I feel Cupid's sweet sting."

Second childhood . . . Tim Dulaney and Sue Jenks cut a caper complete with stuffed bears.



Mail in . . . wonder what's amusing . . . Oh, for a letter from home.



# 1959 Conestogan Staff

*Editor*—Mary Jean Espenshade

*Assistant Editors*—Yvonne Mowrey  
Beverly Styer

*Class Editors*—Senior: Ruby Sykes  
Junior: Joyce Wenger  
Sophomore: Joyce Miller  
Freshman: Janet Espenshade

*Literary Editor*—Joan Lank

*Make-Up Editor*—Marialice Myers

*Sports Editor*—Men: Kent Replogle  
Women: Jean Anne Rogers

*Index*—Clara Barrett

*Business Manager*—Marty Pomroy

## *Make-Up*

Beverly Jerrell	Diana Neubauer
Dorothy Hyde	Barbara Stackhouse
Elfriede Neufeld	Linda Simkins
Barbara Kurnas	Linda Wagner
Sue McMillen	Joan Wetzell
	Jon Singer

## *Literary Staff*

Carol Heilman	Marian Barrner
Belva Cassel	Judy MacKenzie
Ruth Koch	Ilse Langer
Mary Frances Johnstone	Margaret Brown
Donald Garman	Catherine Weaver

## *Photography*

Ned Butt  
Albert Yamada

## *Business Staff*

Joyce Schaffner  
Donald Slonaker  
Larry Dromgold

## *Thanks to . . .*

MR. JAMES YEINGST, Public Relations Director and CONESTOGAN Adviser

MR. GEOFFREY SOWERS, printer

MR. VERE BISHOP, photographer

MRS. SYLVIA HOLLINGER, Public Relations Secretary

Faculty and students

All persons who have contributed historical facts and photos

GROFF'S  
MEATS

CHRONICLE

PHARMACY

MOOSE

LESLIE CARON  
GIGI  
MAURICE CHEVALIER

DRUGS



# Elizabethtown College

ELIZABETHTOWN, PA.

## A Standard Co-educational College

Approved by Pennsylvania State Council on Education

Accredited by Middle States Association

Member of American Council on Education

Member of Association of American Colleges

Approved by New York State Department of Education

GRANTING

A.B. and B.S. Degrees

IN

*Liberal Arts*

*Science*

*Pre-professional Fields*

*Laboratory Technology    Secretarial Science*

*Business Administration*



Strong Faculty

Diversified Extra-Curricular Program

Delightful Location

Emphasizing the values of the small, Church-related College

For information write

President A. C. BAUGHER, Ph.D., LL.D.



SEVENTY-FIVE YEARS OF PRINTING SERVICE



*Sowers Printing Company*

LEBANON, PENNSYLVANIA

OFFSET — LETTERPRESS — BINDING — MAILING

*Compliments  
of*

**B & G LUMBER CO.**

212 W. High St.  
ELIZABETHTOWN

**LEHMAN & BOOK, Inc.**

Dry Cleaners &  
Shirt Launderers

35 WEST HIGH ST.      Phone EM 7-1305

**CONGRATULATIONS**

**CLASS of '59**



**WELCOME**

to the

**Alumni Association**

*Compliments of*

**The Friendly Gift Shop**

8 S. Market St.  
ELIZABETHTOWN, PA.

**GEIB'S CLEANERS**

50 N. Spruce Street

COMPLETE  
STORAGE and LAUNDRY  
SERVICE

Phone: EM 7-1285

**KREAMER PHARMACY**

Center Square

ELIZABETHTOWN  
PENNA.

**Mueller's Flower Shop**

*"Flowers with Quality  
Beauty, and Arrangement"*

55 N. MARKET ST.  
ELIZABETHTOWN, PA.

262 W. MAIN ST.  
MT. JOY, PA.

**JONES & ZINK, Inc.**

INSURANCE & REAL ESTATE

119 S. Market St. Elizabethtown, Pa.

Phone: EM 7-1159

Compliments of

Your Jeweler



**GINDER CLEANERS**

89 E. MAIN ST.  
ELIZABETHTOWN, PA.

Phone: EM 7-1270

41 E. MAIN ST.  
MT. JOY, PA.

Ph.: Mt. Joy OL 3-9292

WE OPERATE OUR OWN  
CLEANING PLANT  
3 hour Shirt Laundry

**RISSEY'S  
FOOD MARKET**

36 S. MARKET ST.

*Quality Meat & Produce*

# MUMPER'S DAIRY

North Hanover Street  
ELIZABETHTOWN, PA.

Phone: 7-1297

*Vitamin "D" Homogenized Milk*

*Milk - Creom - Buttermilk - Orange Drink  
Chocolote Drink*

## H. S. RISSER MOTORS

» » « «

Oldsmobile - Pontiac - Cadillac  
Sales - Service

» » « «

Phone: EM 7-1366      Elizabethtown, Pa.

## KLEIN CHOCOLATE COMPANY, INC.

*Wishes the  
Class of 1959 the Best  
of Success and  
Happiness*

# **BISHOP'S STUDIO**

**CAMERA SHOP**

44 N. MARKET ST.

*Kodak*

*Argus*

*Ansco*

*Groflex*

*Aires*

*Bell and Howell*

*Exacta*

*Polaroid*

**CONESTOGAN  
PHOTOGRAPHER**

Photographic Supplies

• •

*The Modern Studio with Years of Experience*

• •

ELIZABETHTOWN, PA.

Phone: EM 7-1322

*Compliments of*

**MUSSER FARMS**

*Dairy*

*The Finest in Dairy Products*

**COLUMBIA, PA.**

*Ray's Men's Stores*

15 East High Street  
ELIZABETHTOWN, PENNA.  
PHONE: EM 7-6111

Compliments of

**MOOSE'S 5 & 10**

# WEZN RADIO

1600 ON YOUR DIAL

For easy Listening

*Compliments of*

*Your*

**Ober Bros. Gulf Service**

Phone: EM 7-9777

*Compliments of*

**Newcomer's**

Firestone Store

Phone: EM 7-1372

Elizabethtown, Penna.

**FIRST NATIONAL BANK & TRUST CO.**

Elizabethtown, Pa.

*"Where Every Customer is Important"*

Member F.D.I.C.

Bank with the Chime Clock

*Compliments of*

## **HARRIS CLEANERS**

WINDOW CLEANING — FLOOR CLEANING

ELIZABETHTOWN, Pa.

## **SNYDER'S TEXACO SERVICE**

Hershey Road Dial EM 7-9819

GOODRICH TIRES & TUBES  
PICK UP & DELIVERY SERVICE  
COMPLETE RADIATOR REPAIR

Elizabethtown, Pa.

From a cup of coffee to full course  
dinners it's

### **CLEARVIEW DINER AND DINING ROOM**

—And try our Special Baked Ham  
Sandwiches. *We bake 'em!*

*Always Welcome*

Route 230, 2 miles East of E-town

*Compliments of*

## **LEO KOB, INC.**

24 S. MARKET ST. ELIZABETHTOWN

### **PLUMBING & HEATING**

*Since 1904*

Westinghouse Appliances  
G.E. Gas & Oil Heat  
G.E. Air Conditioning

*Compliments of*

# **RED ROSE DAIRY**

MT. JOY, PENNA.

Phone: OL 3-2592

*Quality Dairy Products Since 1935*

# GRACE C. BLOUGH

Ladies' Apparel

116 South Market Street

ELIZABETHTOWN, PENNA.

PHONE: EM 7-4976

*Compliments of*

## **Garber Motor Company**

**FORD-MERCURY**

Sales & Service

ELIZABETHTOWN, PA.

## **Roth's Furniture Store**

*Furniture of Character*

206-210 South Market Street

Elizabethtown, Pa.

Phone: EM 7-1382

Phone: EM 7-4732

## **Economy Shoe Store**

Not *CHEAP* Shoes

But *GOOD* Shoes *CHEAPER*

15 W. High St.

Elizabethtown, Pa.

## **AUNT SALLY'S KITCHEN**

715 N. Market St.  
ELIZABETHTOWN, PA.

E-town: EM 7-1268

*Banquet (Specialty)*

## **REINHOLDS' SUNOCO SERVICE**

**LeRoy F. Reinhold**  
735 South Market St.  
Elizabethtown, Pa.

Dial EM 7-9747

OPEN 24 HRS.

**Herman A. Reinhold**  
13th and State Streets  
Harrisburg, Pa.

Dial 3-9588

OPEN 24 HRS.

**Carl H. Reinhold**  
3317 Jonestown Road  
Progress, Pa.

Dial 3-9018

OPEN 24 HRS.

*"Pick Up and Delivery"*



**BUCH  
MANUFACTURING  
COMPANY**

> > < <

ELIZABETHTOWN, PA.

**L. B. HERR & SON**

> > < <

*Office and School  
Supplies and Furniture*

*Books • Stationery • Printing*

*"The Portable Typewriting  
Store"*

> > < <

44-48 West King Street  
Phone: EXpress 4-7151  
LANCASTER, PA.

Kodaks

Stationery

**Dorsheimer's**  
*"Center Square"*  
ELIZABETHTOWN, PA.

Sporting Goods

Confectionery

**Shearer's  
Furniture Store**

*"The Largest Furniture Store Between  
Lancaster and Harrisburg"*

35-37 South Market St. Elizabethtown, Pa.  
Phone: EM 7-4694

24 Hour Service

Phone: Elizabethtown EM 7-1138

**NEWCOMER'S SERVICE STATION**

T. M. EBERSOLE, Proprietor

*Richfield Gasoline :-: Richlube Motor Oils :-: Tires, Tubes, Batteries*

ELIZABETHTOWN, PA.

*Compliments of the*

**W. T. Grant Co.**

**HITZ'S GROCERY**

ELIZABETHTOWN, PA.

Quality Groceries - Meats  
Ice Cream - Soft Drinks

**R. E. HERSHEY**

QUALITY MEATS  
DUTCH SWEET BOLOGNA  
HICKORY SMOKED HAMS

Visit our Store at Plant

Phone: EM 7-1347 935 Groff Ave.  
Elizabethtown, Penna.

**WESTERN AUTO  
ASSOCIATE STORE**

31 South Market Street

ELIZABETHTOWN, PA.

**KELLER BROS.**



BUFFALO SPRINGS, LEBANON CO., PA.

Phone: Schaefferstown 34

LITITZ, LANCASTER CO., PA.

Phone: MA 6-2121

**S. G. Hershey & Son**

Department Store

Elizabethtown, Pa.

*Compliments of the*

**Savoy Shoe Co., Inc.**

★

*Makers of*

**FINE SHOES FOR  
WOMEN**

★

ELIZABETHTOWN, PENNA.

**The  
Christian Light Press  
Book Store**

*Distributors of*

**Religious Merchandise**

20 S. Market St.

Elizabethtown, Pa.

**BOB'S FLOWER SHOP**

Phone: EM 7-2211 39 S. Market St.

*Elizabethtown's Finest Equipped Florist*

**JOHN M. MILLER**

Insurance Broker

LITITZ, PA.

*General Electric*

SALES

SERVICE

**JACOB B. FISHER  
APPLIANCE STORE**

22 E. High St.

Elizabethtown, Pa.

**ZARFOSS HARDWARE**

Home Furnishings and  
Sporting Goods

On the Square Elizabethtown, Pa.

Phone: EM 7-1261

**BAUM'S  
BOLOGNA  
INC.**

*Home-made*

**BOLOGNA — DRIED BEEF**

*A Select Product*

**"Try our 2 lb. Midget Bologna"**

Elizabethtown, Penna.

Phone: EM 7-5451

**Buy Kuntzelman's**

*Penna.-Dutch*

*Ice Cream*

**Elizabethtown Creamery**

**ASSORTED FLAVORS  
AND NOVELTIES**

Phone: EM 7-1389



**MADE IN CHOCOLATE TOWN  
SINCE 1923  
... SO THEY MUST BE GOOD!**

# GRUBB SUPPLY COMPANY

\* \* \*

FUEL OIL—COAL—FEED

ELIZABETHTOWN, PA.

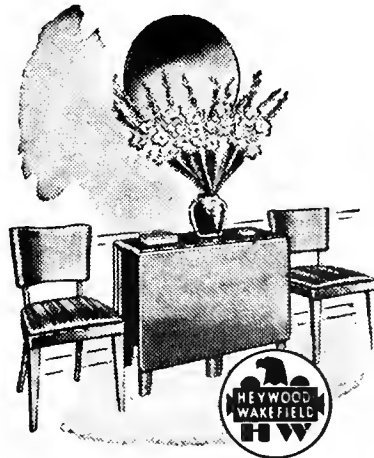
## MILTON F. EBERLY

*Furniture of Character at Reasonable Prices*

Route 3, Elizabethtown, Pa.

Phone: EM 7-5468

*Our Location Saves You Money*



**ELIZABETHTOWN  
BUILDING  
& SUPPLY CO.**

Phones: EM 7-1128  
EM 7-1129

H. MARTIN HOFFER, OWNER

VERE M. HOFFER, MGR.

**"ONE-STOP"**

LUMBER  
MILL WORK

**SERVICE**  
BEST IN THE CITY

BUILDING  
MATERIALS

341-51 WEST BAINBRIDGE ST. ELIZABETHTOWN, PA.

**Paxson's Cut Rate**

Parakeet and Canary Supplies

Patents—Elastic Hose—Trusses  
All Appliances

19 W. High Street  
Elizabethtown, Pa.

**The Market Basket Restaurant**  
ELIZABETHTOWN, PA.

*Serve to Please  
and  
Pleased to Serve*

Miss Arlene Hess, Mgr. 59-61 College Ave.

**Elizabethtown Chronicle**

J. G. Westafer & Son

*Printing Publishing*

Elizabethtown, Pa.

**Bischoff's Jewelry Store**

WATCHES - DIAMONDS  
and  
JEWELRY

25 Center Square Elizabethtown, Pa.

**THE DAVID MARTIN STORE**

Men's & Boys' Clothing

Center Square

Elizabethtown, Pa.

# Index

Abey, Kathryn L. ....	102, 114	Blough, Harry E., Sr. ....	36
Adams, Mary P. ....	26	Bomberger, Arlene M. ....	83
Adams, William, Jr. ....	97	Bongart, Gerald L. ....	83
Adams, William L. ....	64	Bonier, Robin ....	106, 142
Administration ....	18	Book, Jane E. ....	65
Advertisements ....	155	Booth, James H. ....	43
Akerman, James W. ....	82, 135	Bortner, Harvey E. ....	81
Albaugh, Bernard ....	101	Bortzfield, Lloyd G. ....	66, 135
Albright, Gloria J. ....	105, 117, 119	Bowen, Raymond ....	99
Aldinger, H. Glenn ....	108	Bowers, Kenneth L. ....	43, 114
Algier, Mary Ann ....	102	Bowman, William A. ....	81
Allan, Grace ....	36	Boyer, Penelope R. ....	99
Alpha Hall ....	13	Bradley, Kirby ....	36
Alumni Gymnasium ....	14	Brendlinger, Brenda A. ....	107
Annibali, Richard W. ....	41	Brenneman, William E. ....	43
Antolick, Gary R. ....	109	Brensinger, James Daniel ....	43, 117
Anwyll, David C. ....	41, 129	Brightbill, John A. ....	97, 142
Apgar, Jean L. ....	100, 116	Brightbill, Madeline ....	43, 115
Apgar, Bessie D. ....	26, 151	Brown, David S. ....	83
Apgar, Charles S. ....	26, 151	Brown, Margaret G. ....	44, 115, 126
Appel, Edward C. ....	41	Brown, Walter E. ....	36
Archer, Lorenzo P. ....	104	Brubaker, Gloria A. ....	83
Arnold, David L. ....	41	Brubaker, Russel G. ....	66
Arnold, Ruth Ann ....	41, 117, 126	Brubaker, Samuel M. ....	66
Arnsberger, Dale R. ....	61	Bruckhart, Glenn J. ....	113, 128, 130
Aungst, Harris F. ....	81	Bryant, Judith C. ....	83
Baer, Helmut W. ....	82, 128, 129	Brydia, Laurence E. ....	44
Bailor, Darla E. ....	105	Bucher, Glenn R. ....	98, 102, 117, 118
Bainbridge, Edith ....	65	Buckendorff, G. Fred, Jr. ....	100, 117
Bair, Janet ....	82, 152	Bucknum, Marilyn D. ....	104
Bair, Jolene ....	65	Buckwalter, David W. ....	66
Bair, William ....	82	Bufis, Gerald R. ....	109, 115
Baker, Ralph S. ....	41, 112, 113	Burrows, Alive L. ....	83, 119
Baker, Sally ....	109	Bush, Carol Ann ....	84, 126, 143, 147
Balmer, Thelma ....	37	Bush, Edwin M., Jr. ....	84
Bannister, Shelley ....	81, 111, 142	Bush, Terry L. ....	44, 140, 142
Barber, Daniel S. ....	65	Bushong, Doris E. ....	102
Barley, Donald ....	97	Butler, Stanley I. ....	66, 145
Barr, David ....	109, 119	Butt, Ned M. ....	44, 121, 140
Barrett, Clara L. ....	42, 114, 115, 120, 126	Byerly, Robert A. ....	25, 116
Barrner, Marian J. ....	83, 152	Byers, Charles M. ....	66
Barsumian, Jane ....	100, 118, 119	Cale, Emerson D. ....	44
Baseball ....	135	Campbell, Thomas A. ....	109
Basehore, Craig A. ....	108	Campus Life ....	138
Basketball, Men's ....	130	Caputo, Ronald V. ....	109
Basketball, Women's ....	127	Carroll, Ruth A. ....	84
Baughner, Pres. A. C. ....	16, 20, 21, 151	Carter, Colvin C. ....	44, 112, 129
Baughner, Nancy K. ....	65, 116, 117, 118, 119, 120	Cassel, Belva L. ....	84, 115, 119, 121
Baum, Harry M. ....	42	Cassel, L. David ....	67, 116
Bean, Henry ....	65	CBYF ....	117
Beard, Carol ....	97, 126	Chaffee, Quentin R. ....	84
Beard, Gary ....	42	Chapman, Edwin R. ....	97
Becker, Paul ....	109	Cheeks, Warner H. ....	84, 125, 135
Bell, Harry F. ....	104	Cheerleaders ....	124
Bender, Glenn E. ....	109, 135	Cheung, Wai-Mun ....	103
Bentz, Donna Jean ....	106	Choir ....	118
Berkebile, James M. ....	27	Chubb, John F. ....	107
Berkebile, Ray ....	100	Coble, Robert L. ....	109
Bernhard, H. Fred ....	109	Colegrove, William H. ....	45
Berry, Brenda L. ....	104, 121	College ....	8
Billow, William ....	42	Collins, J. Thomas ....	84, 112
Bitting, Edgar T. ....	27	Commencement ....	139
Blose, Maurice R. ....	81	Committee on Men's Affairs ....	112

Committee on Women's Affairs	112	Fairview Hall	14
Conestogan	115	Farver, Martha	37
Conestogan Staff	154	Fasick, Kenneth M.	81
Conner, Lee G.	84, 134	Fasnacht, Lois	108
Contents	2	Feaser, Mary E.	68, 119
Convocation	138	Feder, Morton C.	40, 114, 121
Cooper, Sara	45	Feitsma, Orrie	47, 143
Cordas, Stevane	67	Fellenbaum, Edith H.	28
Correll, Paul D.	84, 135	Feo, Nancy P.	85
Cosner, Jessie	36	Ferster, Janice L.	85, 114, 118, 119, 142
Cosner, Yvonne E.	45	Fetter, Rev. Raymond L.	117
Cottman, Glen H.	97	Fiedler, Joseph, Jr.	109
Cox, Mary	36	Fisher, Nevin W.	28, 118
Craddock, Brenda	109	Fisher, Robert L.	109
Cromer, Douglas E.	84, 118	Fluck, Kay	100
Cross Country	128	Focht, Joyce	85
Crum, Glenn S.	45	Foreman, Claude L.	85, 142
Curtis, Barbara E.	85	Foreward	3
Custer, Hubert M.	27, 121	Forrer, N. Elizabeth	82, 146
Dahms, Janet	100	Fox, William R.	47
Davis, Myrtle S.	45	Frank, Woodrow W., Jr.	109, 130
Davis, Samuel	81	Frankhouser, Janet L.	86
Dedication	6	Franks, William H. III	105
Deibert, Beth	107	Fretz, Joseph E.	104
Dengler, William F.	85, 130	Frey, Eunice C.	107
Denlinger, Charles G.	85, 116	Fu, Tai-Keung	103
Dent, Sheldon	45, 130, 131, 135, 137	Furry, Romayne E.	86, 116
DeStephano, John A.	67	Gaines, Glen Ellen	81, 115
DeWitt, Beverly	100	Gantz, Gordon H., Jr.	86
Dibert, Earl	67	Gantz, Richard E.	109
Dieffenbach, Kenneth M.	67, 118, 121	Garber, Eugene Loy	38, 82, 121
Discavage, Margaret J.	81	Garber, Lois	37
Dissinger, Barbara A.	107	Garland, Jerry L.	47, 115, 117
Dormuth, Steven K., Jr.	109	Garman, Donald N.	86, 115
Dorr, Elizabeth L.	106, 119	Garman, Terry G.	86
Doster, Larry L.	103	Garvine, Barbara E.	100
Douglas, Matthew M., Jr.	61	Geesey, Jack B.	86
Dougherty, Dennis	101, 111	Geiger, Edwin W., Jr.	47, 112, 130, 131
Dourte, Wilbert	46	Geiger, Robert L.	86, 130, 135
Dramatic Productions	142, 154	Geiselman, Ruth Ann	109, 118
Dromgold, Larry E.	46	George, David L.	108
Drukenbrod, Ruth E.	85	Gerber, Robert E.	86, 97
Duke, Julianna	109	Gettel, Barbara N.	109
Dulany, Tim O.	103	Gibble Science Building	15
Dunmire, Martha	36, 46, 119	Gibble, Wilbur W.	109, 116, 118, 128
Eastlack, Elinor	28	Gichner, Eloise	107, 126
Ebersole, Ruth	36	Gilchrist, Marion A.	68
Eby, James D.	46, 152	Ginder, Harold B.	81
Eby, Judith A.	85, 124, 126, 127	Gingrich, Henry F.	29
ECCA	116	Girvin, Hayes B.	61
Egresites, Georgianna	102	Gish, Lillian J.	68
Elliott, Linda M.	97, 127	Gladfelter, Mary K.	7, 99, 118
Elston, William E.	67	Glazier, John R.	86, 125, 135
Enck, Douglas	109, 116	Gordon, Eugene Q.	87, 112, 113, 130, 134, 144
Engle, Emma	23	Gotkin, Howard	97
Engle, John E.	46	Graduation	139
Enterline, Clarence G.	23	Graham, Marsha E.	68, 115, 116, 118, 124
Enterline, Mildred H.	28, 111	Gray, Albert L., Jr.	29
Epple, Bruce D.	85	Greene, David Paul	23
Eppley, Martha A.	103, 126, 127	Greenly, Faye I.	97
Eshelman, Kenneth R.	109, 119	Greider, Kenneth H.	109
Espenshade, Eby	4	Grew, Ronald B.	102
Espenshade, Janet L.	108, 115, 126, 147	Griffin, Rosalind E.	97, 121
Espenshade, Mary J.	40, 115, 120	Griffith, Jean R.	68
Estock, Gerald M.	97	Grimm, John R.	47
Eta Gamma Kappa	116	Grinbergs, Liga	48, 118, 147
Etownian Staff	114	Gring, Larry R.	48
Everhart, William R.	103, 119	Groff, C. Eugene	69
Fackler, Raymond	36	Groff, Charles O.	69, 146
Faculty	18	Groff, L. Raymond	48
Falstick, Richard P.	68, 142	Groff, Mary Ellen	87, 126



Groninger, Louann J. ....	87	Homecoming Day .....	140
Grubb, Alberta E. ....	69	Hoover, Elmer B. ....	30, 120
Grubb, Pauline L. ....	104, 143	Hornberger, Judith .....	88, 137
Grubb, Warren .....	36	Horne, Emma .....	37
Gruber, Samuel C. III .....	130	Horning, M. Louise .....	71, 126
Grunstra, Maynard .....	61, 116	Horton, Virginia A. ....	71, 115, 126
Gulyas, Ruth Ann .....	48	Hosler, Donald H. ....	88, 113, 128
Haas, Gerda .....	19, 69, 112, 113, 120	Hostetler, James R. ....	88
Hablett, Lynne .....	103, 126	Hostetler, Burnell .....	88
Hackett, Carlton C. ....	107	Hostetter, Doris V. ....	88
Hackman, James .....	102	Hostetter, Ellis L. ....	71
Hackman, Mary .....	36	Hostetter, Margaret A. ..	49
Hackman, Vera R. ....	22, 36	Houck, Shirley R. ....	88
Hackman, Willard H. ....	81	Howard, Thomas G. ....	109
Haefner, George P., Jr. ....	69	Howells, Harry W. ....	100, 129, 134
Hahm, Sung-Ho .....	87, 121	Huber, Donald B. ....	89
Haines, Margaret E. ....	48	Huber, Harold E. ....	89
Halbleib, Asher S. ....	70, 118, 143	Hunberger, Patricia .....	71
Hall, Carroll L. ....	70, 113, 116, 117, 118, 124, 127	Hurley, Francis .....	100
Hamil, William C. ....	61	Hyde, Dorothy J. ....	72, 112, 116, 121
Hanle, Robert V. ....	106	Imboden, Charles E. ....	50
Harnly, Edgar P. ....	97, 117, 130	In Memoriam .....	4
Harnly, Julie A. ....	106	Intramural Sports .....	144
Harris, James .....	48	Itzoe, Linda V. ....	102
Harris, Ernest L. ....	87	Jackson, Margo A. ....	81
Hartman, Robert C. ....	108	Jackson, Patricia B. ....	89
Hassler, Karl C. ....	49	Jacobus, Doris A. ....	97
Hay, Janet L. ....	87	Jacoby, Louis C. ....	50
Heberlig, Susan K. ....	97	Jenks, Sue E. ....	105
Heckman, James R. ....	109	Jerrell, Beverly A. ....	50, 115, 120
Hedrick, Jack L. ....	49, 112, 113, 130	Johnson, Harold G. ....	72
Hefferan, Martin T. ....	87, 130, 131, 135	Johnson, Ralph D. ....	89, 118
Heffley, Robert L. ....	87, 118	Johnson, Sandra F. ....	72
Heilman, Alice S. ....	25	Johnstone, Mary Frances ..	89, 115, 118
Heilman, Carl E. ....	29	Jones, Barbara E. ....	89, 127
Heilman, Carol R. ....	87, 114, 115, 143, 152	Jones, Betty .....	109
Heisey, Harry .....	36	Jones, Kay L. ....	89, 126, 127
Hench, John S. ....	70	Jones, Larry .....	107
Hendricks, Lucille .....	70, 117, 118	Kauffman, John C. ....	109
Hendricks, Ronald P. ....	49	Keiser, James G. ....	108
Hendrickson, W. Dennis .....	109	Keiter, Annie E. ....	100, 115
Hensel, Barbara .....	102	Keller, Arlan C. ....	50
Hepplein, Joyce M. ....	70, 117, 120	Kelly, Louise K. ....	30
Hergert, Jane R. ....	88	Kemrer, Allan G. ....	109
Herr, Ira R. ....	25, 125, 128, 135	Kendig, William L. ....	72, 112, 125, 129
Herr, Kathryn .....	29	Kennedy, Patricia K. ....	89
Hershey, Carroll .....	88, 125, 135	Kerchner, Lloyd D. ....	89
Hershey, Richard .....	129	Kerkeslager, Donald A. ..	109
Hertzog, Phares H. ....	30	Kerkeslager, Ellwood .....	109, 125, 135
Hess, George Donald .....	49	Kernen, Marjorie A. ....	89, 124
Hesser, Robert B. ....	49	Kerns, Lyle Eugene .....	108, 130, 135
Hetrich, A. Ronald .....	81	Kessler, Guy L. ....	72, 116
Hetzl, Lawrence R. ....	88, 129, 135	Kettering, Joseph W. ....	16
Hibner, Gary W. ....	70	Keyser, Ruth G. ....	90
Higinbotham, David H. ....	88, 125	Kilhefner, Audrey .....	5, 146
Hill, Marole L. ....	109	Kilhefner, Dale Z. ....	98, 101, 118, 119
History .....	8	Kindler, Herta .....	109, 152
Hixson, Gladys .....	37	King, Thomas N., Jr. ....	50
Hixson, Sylvia .....	104, 116, 117	Kipp, Ruth .....	36
Hoar, Joseph William .....	64, 112, 125	Kitzmilller, Carol E. ....	109
Hockey Team, Women's .....	126	Klauss, Noah M. ....	31, 119
Hodgins, Daniel S. ....	97	Klinedinst, Walter Thomas ..	72
Holland, Warren W. ....	30	Knaub, Donald E. ....	51, 120, 143
Hollinger, J. Robert .....	37	Knepper, James S. ....	64, 112, 125
Hollinger, John .....	5	Koch, Ruth Kathryn .....	90, 97, 115
Hollinger, Linda E. ....	101, 152, 116, 117	Kohr, Henrietta A. ....	90, 118, 120
Hollinger, Paul R. ....	71	Koski, Karen E. ....	103, 121
Hollinger, Sylvia .....	37, 114	Krajcsik, Robert S. ....	90
Holman, Bette J. ....	71, 114, 124	Kranch, Linda L. ....	100
Holsinger, Betty J. ....	36, 151	Krauss, F. Neal, Jr. ....	97, 140
		Krebs, Robert J. ....	103, 125

Kreider, Elaine M. ....	90
Kreider, J. Kenneth ....	90, 116, 117, 118
Krick, Larry R. ....	103
Krieg, Doris E. ....	73, 113, 126
Kruger, Carol L. ....	90
Kurnas, Barbara A. ....	109
Kurtz, Earl ....	16, 21
Kurtz, Nancy L. ....	51, 124, 126, 145
Landis, Fred ....	109, 118
Landis, Harry E., Jr. ....	81
Langer, Ilse ....	109, 115, 152
Lank, Joan ....	90, 114, 115
Lantz, Jack R. ....	108
Lantz, Helen F. ....	90
Lantzy, Richard A. ....	73
Large, Doris R. ....	91, 116
Larish, William C. ....	51
Lascarides, V. Celia ....	61
Lash, Robert ....	109, 125
Lauer, Ira E., Jr. ....	109
Leamer, Robert ....	104
Learn, Nancy J. ....	61
Lease, Kenneth R. ....	91
Leatherman, Joan ....	91, 118
Leber, Jeanne E. ....	91, 118
Leeds, Emily C. ....	91
Lefever, Elizabeth ....	146
LeFevre, Russell C., Jr. ....	51
Leicht, Paul M. ....	101, 125
Leister, Diana ....	51, 126
Leppo, Lorraine K. ....	73
Leshner, Carolyn D. ....	91
Lewis, Doris ....	37
Liacouras, Pete S. ....	97, 135
Library ....	14
Lindemuth, David W. ....	109
Lineweaver, James E. ....	91
Lohr, Elizabeth ....	52, 118, 120
Longenecker, William R. ....	91, 135
Loose, Richard C., Jr. ....	105
Lott, George T. ....	109
Lowe, Jesse L. ....	91
Lowery, Robin W., Jr. ....	127
LSA ....	117
Lutz, Sandra Marie ....	92, 120, 147
MacBride, James E. ....	92
MacKenzie, Judith E. ....	104, 115, 124
MacKenzie, Margaret J. ....	104
Mackey, Susan ....	101, 119
MacLaughlin, Sandra C. ....	92, 127
MacPherson, Gary A. ....	105
Magee, John L. ....	73
Mann, John E. ....	73
Markey, Nancy L. ....	109
Markowitz, Richard P. ....	52, 140
Martin, Martha ....	31
Martin, Sally Ann ....	99, 124, 126
Martin, Tony L. ....	102
Marvel, Robert F. ....	81
Matt, Henry A. ....	92
Mazurik, J. Ronald ....	73, 120
May Day ....	146
McAfce, Terry K. ....	106
McAuley, Roy E. ....	21, 151
McBeth, Esther ....	36
McCormick, James E. ....	74
McCracken, William F. ....	103
McGovern, Walter H. ....	97
McMillen, Susan H. ....	104
McNaughton, Francis ....	109
Mease, John H. ....	74
Mellott, Earl W. ....	52, 112, 125
Mellott, Park B. ....	109
Merkey, A. Lester, Jr. ....	109
Merritt, Richard E. ....	92, 118
Metzger, Paul D. ....	74
Meyer, E. G. ....	31
Meyer, Gertrude ....	31, 148
Millar, Glenn W., Jr. ....	97
Miller, Carol M. ....	106
Miller, Gary B. ....	74, 135
Miller, Jack H. ....	74
Miller, Ruth ....	37
Miller, Joyce L. ....	92, 114, 115, 116, 121
Miller, Lee W. ....	81, 121, 152
Miller, Richard G. ....	52
Miller, Robert Alan ....	19, 40, 141
Miller, Robert Arison ....	109
Miller, Ronald H. ....	81
Minnich, John P. ....	92, 119
Moen, Anne D. ....	97
Monn, Donald E. ....	52, 121, 143, 151
Moser, Phyllis A. ....	52, 113, 126, 127, 146, 147
Mosimann, Carol G. ....	106
Mostoller Esther D. ....	92
Motter, Jerry L. ....	53
Mowrey, Yvonne A. ....	53, 115
Moyer, Gail S. ....	106
Mumaw, Ruth ....	37
Mumma, Kenneth ....	104
Musser, Ethel ....	109
Myers, Dennis L. ....	53
Myers, Dixie J. ....	99
Myers, Janet K. ....	106, 126, 127
Myers, Marialice F. ....	37, 92, 115, 142
Myers, Martha J. ....	107
Nafziger, Daniel E. ....	103
Nase, Patricia A. ....	53, 120
Neff, Kenneth E. ....	92
Neilson, Judith G. ....	105
Nesbit, Judy ....	99, 118, 124
Ness, Donna L. ....	109
Neubauer, Diana L. ....	103
Neufeld, Elfriede M. ....	93
Neumann, Elinor B. ....	32
Neumann, Frederick C. ....	32
New Men's Dormitory ....	16
New Women's Dormitory ....	15
Newcomer, Nancy ....	109
Neyer, Stanley R. ....	74, 112
Nyce, Lloyd P. ....	97, 116, 117, 134
Ober, Helen M. ....	53, 120
Orchestra ....	119
Osborn, G. Henry III ....	64, 112, 113, 121, 125
Oskam, Anthony ....	109, 128
Patton, Virginia L. ....	93, 126
Paules, Betty L. ....	53
Paules, Gloria ....	93, 117
Paules, Janet M. ....	54
Peacock, Elizabeth ....	100, 142
Pearce, Judith E. ....	105, 113, 126
Pegram, Sidney C. ....	75, 126, 146, 147
Pensyl, William C. III ....	54, 113, 130, 131, 135
Pep Band ....	124
Peters, Robert P. ....	93, 109, 134
Peterson, Robert H. F. ....	54
Petry, Karl G. ....	75
Pfeffer, Helen F. ....	93
Phi Beta Chi ....	121
Political Science Club ....	121
Pomroy, Harold M. ....	40, 112
Price, Marjorie S. ....	54, 120
Prosser, Sondra L. ....	105

Pumarejo, Oscar	54	Shetter, Patricia A.	102
Raffensperger, H. E.	16	Shiffer, Clark N.	94
Raffensperger, Shirley	75, 117, 118, 143, 144, 148	Shimmel, Mary Lou	106
Rahn, James W.	55	Shonk, Merwyn R.	108, 119
Rahter, Charles A.	32	Showers, Russell F.	107
Rahter, Emily C.	25	Shreiner, Yvonne J.	101
Raver, James R.	75	Shubert, Ronald L.	109, 125
Reagan, James W.	75	Sieg, Thayer H.	106
Reber, Jerry D.	93, 113, 125	Sigler, W. David	101
Rector, Charles	32	Simkins, Linda M.	98, 115
Rees, Carole E.	100, 141	Simmers, Gerald L.	61
Reese, Martha H.	75, 124, 126, 127	Simonds, David H.	76
Reid, Ronald	105	Singer, Audrey E.	102
Reifsneider, Myra	93	Singer, Jon	107, 115, 128
Reifsteck, Sandra L.	97, 118, 127	Slaybaugh, Bruce W.	57
Reinhard, Richard M., Jr.	101	Slonaker, R. Donald	57, 111
Rentschler, Larry E.	76	Smith, Donald P.	34, 130, 134
Replogle, Philip	101	Smith, Edward B.	57
Replogle, R. Kent	55, 113, 115, 130, 131, 134, 152	Smith, Eugene I.	97
Reuning, Wilhelm	33	Smith, George M.	61, 118, 119, 142
Reynolds, John	97	Smith, Constance	101
Rice, Regina	93	Smith, Milton E.	81
Richman, Donna J.	109	Smoker, Joanne M.	109
Ricketts, Ross G.	93	Snavelly, Henry H.	109
Rider Memorial Hall	13	Snavelly, Mary Ann	37
Riehl, Mary Ann	109	Snowden, Armon	22, 116
Rigler, Joan	55, 124, 127	Snyder, Ann D.	94
Risser, Evelyn N.	105	Soccer	125
Risser, Jeanette L.	55, 112, 124, 126, 146, 147	Sock and Buskin	120
Risser, Julia A.	33, 126, 127	Spangler, Richard J.	94
Risser, Ruth E.	93, 124	Spannuth, Herbert A.	95, 125
Roach, Clyde W.	81	Speros, Spencer	107
Robinson, Gilbert	81	Springer, George W.	109
Robinson, Jo Ann	109, 126, 127	Springfield, Ray	100, 128
Rogers, Jean A.	55, 115, 124, 126, 127, 147	Stackhouse, Barbara	105, 115
Rohrer, Esther	37	Stambaugh, Mary	148
Romberger, Frederick	109	Stambaugh, Oscar F.	34
Rose, Lewis D.	9, 33	Staples, Virginia A.	95
Rosenberger, Robert N.	101	Staskewitz, Roberta	109
Roth, Eugene	101	Steinbacher, Corrine E.	95
Roudabush, Lynne A.	94, 117, 118, 120	Stevenson, Barry	81, 112
Rudacille, Margaret	106, 109	Stimeling, Earl W., Jr.	101
Runk, Donald T.	76	Stone, James	108
Sabbi, John F.	97, 135	Stoner, Kay	81
Santee, Sylvia M.	76, 118	Stouffer, Arlene E.	102
Saylor, Lynn L.	94, 135	Stout, Janet L.	107
Schaffner, Joyce A.	56, 112, 142	Stout, Judith	105
Schlickemaier, Barbara	94, 113, 127	Strauss, Evelyn M.	99, 118
Schlosser, Ralph W.	10, 19, 33	Strayer, Lance L.	76, 125
Schneider, Carolyn A.	39, 56, 126	Stroh, John C.	99
Schneider, William G.	97	Student Activities	110
Schopf, Edward E.	56, 118, 143	Student Government	112
Schrack, Susan E.	100	Stump, N. Franklin	34
Schultz, Paul C.	76	Styer, Beverly J.	57, 112, 114, 115
Schultz, Terrence R.	94	Styer, Malcolm	97
Schwartz, Donald R.	94, 125	Sunday, Ernest G.	57
Scott, Bonnie J.	104	Supulski, Beatrice E.	95
SEAP	120	Swanger, Sandra A.	95
Seese, Bryan P.	94, 135	Swann, Sandra H.	95, 112, 113, 126, 127
Seiders, Larry	56	Swayne, Barbara R.	95
Seiders, Terry	109	Sweigart, Jere H.	101
Seldomridge, J. Albert	16, 24	Swingler, Melanie R.	77
Semple, Elaine	108, 114	Sykes, Ruby C.	57, 115, 120, 121
Shade, Adelaide E.	56	Tauscher, Kay A.	108
Shaffer, Clair T.	56	Taylor, M. Mae	102
Sharpless, Richard E.	61	Taylor, Joyce	106, 121
Sheeley, Helen J.	34	Tejeda, Manuel B.	77, 125
Shenk, Doris J.	19, 108	Tennis	134
Shenk, Harold A.	102	Teufel, Robert E.	109, 135
		Thomas, Lonny L.	97
		Thome, Bernard A.	58, 113, 128

Thome, Jere	58	White, James T.	78
Thome, Ronald E.	109	Williams, Patricia	78, 121, 126, 127
Thompson, Patricia A.	95, 115	Williams, Richard K.	60
Thornley, James H.	95	Williard, James M., Jr.	79
Thurston, Arnita L.	106, 126, 152	Williard, Yvonne S.	79
Tice, Ruth A.	97, 126, 127	Willoughby, Donald E.	79, 118
Tinglof, Bruce W.	77	Wills, E. Virginia	101, 115
Todd, James H. III	104, 125	Wilson, Thomas O.	105
Tome, Gerald R.	58	Wilson, Victor E.	81
Trimmer, Russell T.	61	Wingert, James A.	61
Trimmer, Thomas R.	99	Wise, Gene R.	60, 125, 135
Trissler, Gerald H.	58	Wise, Kenneth J.	61
Tritt, Robert K.	77	Wise, Robert C.	97
Trops, Tamara	81	Wisegarver, Kathleen Y.	96, 118
Trustees	17	Wisehaupt, H. Edward	61
Tyndall, Bruce M.	35	Witmer, Donald E.	109
Ulmer, Barbara A.	77	Witt, James E.	79
Ulrich, George W.	77	Witt, Jennie D.	102
Usinger, Patricia A.	96, 126, 127	Wittlinger, Carl R.	96
Varner, Ronald	58, 115	Wohnseidler, Theodore H.	107
Varner, Ruth E.	59, 112, 120	Wolf, Donna R.	79
Varsity E Club	113	Wolf, Paul L.	81
Vosburgh, Donald R.	35	Wolff, Gerald A.	61
Vulich, Stephen	59, 81	Wolgemuth, James H.	109, 117
Vulopas, Paul S.	59	Wolgemuth, Janet G.	96
WAA	113	Women's Auxiliary	149
Wagenseller, Joseph P.	96, 119	Woodring, Paul S.	97
Wagner, Janet E.	96, 117	Woodward, Elsie H.	97
Wagner, Kenneth	81	Woolcock, Daniel J.	109
Wagner, Linda	105, 124, 126, 147	Wrctsting	129
Wagner, Loren L.	59	Wyles, Mona J.	97
Walborn, Patricia A.	96	Wyon, Alexander	97
Wallin, Judith K.	78, 121	Yamada, T. Albert	109, 115, 152
Ward, Marilyn	59	Yeingst, James L. M.	24, 115
Warner, John H.	96	Yocum, James W.	79
Weaver, Catherine L.	60, 113, 115, 126, 127	Yoder, Jack	103
Weaver, Charles E., Jr.	60, 117, 118, 129	Yohe, Barbara A.	80, 116, 120, 127
Weaver, Charles W.	35, 145	Yohn, Robert L.	80
Weaver, Dorothy E.	78	Yost, David A.	100
Weaver, James B.	109, 117, 129	Young, Galen D.	97, 112
Weaver, Wilbur E.	21, 22	Young, J. Atlee	35
Webb, Dancen K.	60	Young, Robert S.	16, 24
Weddle, G. Curtis	60	Yovanovic, Milan	109
Weller, Kathleen D.	78, 117, 120, 127	Zeiders, Dale L.	97, 113
Wenger, John C.	107, 117, 134	Zeigler, Carl W.	39, 61, 113, 121
Wenger, Joyce E.	64, 115, 117, 120, 121, 124, 143	Zellner, Donald G.	81
Wenger, S. S.	16	Zettlemoyer, Jean M.	99
Wentz, M. Patricia	96	Ziegler, Ruth E.	80, 115, 116, 147, 152
Wentz, William P.	78	Zimmerman, Frederick J.	81, 113, 116, 125
Wert, Linda L.	96	Zimmerman, Gary R.	81
Wetzel, Joan L.	106	Zlobik, Dorothy	81
Whisler, Richard L.	81	Znotens, Mara	97, 142, 146
		Zuck, Nevin	148









"Nothing that was worthy in the past departs; no truth or goodness realized by man ever dies, or can die; but is all still here, and, recognized or not, lives and works through endless changes."—Carlyle

